

# **Township of Breitung Agenda-Regular Board Meeting**

**Township of Breitung Regular Board Meeting 10/26/2023**

**Breitung Community Center 12:00pm**

- Call the meeting to order/Roll Call
- Acceptance of Agenda
- Approval of Minutes
  - 09/28/23 Regular Board Meeting
  - 10/10/23 Special Board Meeting
- Approval of September 2023 Treasurer's Report
  - Checks Written 48049
  - Total Disbursements-\$349,647.03
  - Fund Balance-\$567,894.43
  - Voided Checks-None
- Correspondence
  - MAT-\*September & October Newsletter \*Conference \*By Law Changes
  - PERA-\*Fall Newsletter\*Legislative Update
  - IRRR-\*October 4<sup>th</sup> & 25<sup>th</sup> Newsletter\*October 17<sup>th</sup> Board Meeting Recap
  - St. Louis County-\*Department Reorg\*
  - 2023 T-S Little League
  - State of MN-\*Board of Peace Officers\*20 Year Highway Investment Plan\*Pollution Control Ideas\*Forestry Funding\*
- Public Input

## **Reports:**

- Police-See Attached
- Fire-See Attached
- Road and Bridge-See Attached
- McKinley Park
- Recreation
- Wastewater Board
- Ambulance Commission

Acceptance of Reports

## **Old Business**

- Sale of Land in Parcel 270-0110-02910
  - Open Sealed Bids
  - Approval of Resolution 2023 #26 Sale of Land
  - Sale Agreement (if sale approved)

- Infrastructure Projects-Updates
  - Resolution 2023-#29 Make Application and Accept funds from St. Louis County CDBG Community Infrastructure
- PFA Loan
- Outdoor Recreation Project-McKinley Park-Updates
- Police Department
  - Hiring of PT Police Officer-Isaac Karolczak
- Township Road Improvement Project (Thompson Farm Rd)-updated cost estimate per JPJ Engineering is \$633,200
  - Resolution 2023 #27-Make Application and accept funds from the State of MN LRIP Program
  - Resolution 2023 #28-Make Application and accept funds from SPRA
- Sale of Gravel and Delivery from Breitung Gravel Pit
- Poll Pad-for use at registration during elections
- Set Date for Union Negotiations with LU 49

#### **New Business**

- Pay Bills as presented
- Letter from the Vermilion Park Inn with pictures
- Resignation of Fire Department member David Swanson
- Approve Partial Payment
  - Project 20-741 McKinley Part Trail-\$154,732.73 to Mesabi Bit
- Public Fund Certificate-Renewal Advice
- Land Use Permit-St. Louis County-14 Jasper St
- Police Contract with the City of Tower-2024
- Resolutions
  - 2023 #23-Accepting Donations
  - 2023 #25 Make Application and Accept Funds from IRRR-Stuntz Bay Road

**Next Regular Board Meeting**-Thursday, November 30<sup>th</sup>, 2023 @ 12Noon Breitung Community Center

#### **Adjourn**

## **Township of Breitung Regular Board Meeting 09-28-23 at 12:00pm. In Person Meeting at the Breitung Community Center**

### **Present In Person:**

**Board Members:** Chairman Tim Tomsich, Supervisor Chuck Tekautz, Supervisor Matt Tichel, Clerk Dianna Sunsdahl, Treasurer Jorgine Gornick

**Public:** Daniel Reing-Police Chief (left @ 1:53pm), Stephanie Ukkola-Timberjay, Tom Gorsma-Maintenance Supervisor, John Jamnick JPJ Engineering, Jim Battin, Trudy Hendricks (arrived at 12:04pm, left at 1:30pm), Terry Driscoll (arrived at 1:50pm, left @ 2:30pm)

Call to Order @ 12:00pm by Chairman Tim Tomsich

### **Acceptance of Agenda**

Motion by Supervisor Tichel to accept the agenda as presented

2<sup>nd</sup> by Supervisor Tekautz

Motion Passed 3-0

### **Approval of Minutes**

Motion by Supervisor Tekautz to approve the minutes of the 08/24/2023 Regular Board Meeting Minutes as presented

2<sup>nd</sup> by Supervisor Tichel

Motion passed 3-0

### **Approval of Treasurers Report**

Motion by Supervisor Tekautz to approve the August 2023 Treasurers Report as presented

2<sup>nd</sup> by Supervisor Tichel

Motion passed 3-0

### **Correspondence**

- LMC-\*Upcoming Events
- MAT-\*August 23 Newsletter \*LRIP Funding \*Legislative & Research Committee
- PERA
- IRRR-\*September 6th, 12th<sup>th</sup>, 20<sup>th</sup>, 26th Ranger
- St. Louis County-\*Public Health Updates, \*CDBG, \* Aquatic Species
- MN Rural Water

### **Public Input**

Stephanie Ukkola wanted to thank the Public Works Department for all the hard work at the rink, the bench and the baseball field



## Reports

- Police-See Attached. Tacos with Cops Saturday October 7<sup>th</sup>, 2023
- Fire-See Attached
- Road and Bridge-See Attached. Add gravel delivery to residents to the next Board Meeting
- McKinley Park-October 2<sup>nd</sup> will be the last day. Winter storage fees coming in.
- Recreation-Public Works will start working on baseball field
- Wastewater Board-River Crossing pipe installed, Presentation to MN House done on 09/27/23-looking for 3M in bonding for Water Treatment Plant. Next meeting is 10/10/23.
- Ambulance Commission-Supervisor Tuchel attended AD Hoc Committee and Patty Banks from Ely Hospital is looking to do a study that will possibly include other local areas including Tower. Looking at a "Regional Service", possibly managed by the hospital. Will look at more ideas next month

Motion by Supervisor Tekautz to accept reports as presented

2<sup>nd</sup> by Supervisor Tuchel

Motion passed 3-0

## Old Business:

### Infrastructure Projects

- 2022-Currently awaiting pricing for ditching the Mud Ditch, Spring Rd required a deeper sub-cut so this will be paved in 2024, culvert at the bottom of Church St needs installation
- 2023-1<sup>st</sup> Avenue and Church St on hold. Looking to do a smaller project, request JPJ gives an updated cost estimate for 250k. CDBG of 75k, IRRR pre app is opening up, and will meet in December, Chairman Tomsich needs to get application in. Change most items from replace to repair. Manhole on 1<sup>st</sup> Street needs to be done for sure with curb and gutter.

PFA Loan-Wastewater Board-Force Main Project is nearing completion with some punch list items yet to do. PFA requires an external audit for the 1<sup>st</sup> year. Doesn't make sense to have the City of Tower apply, take too much time. Chairman Tomsich awaiting word from Walker, Giroux & Hanne Accounting Firm in regards to cost, as just the Sewer Account under the Breitung Water and Sewer Commission would need the audit. Have not signed or requested loan, will discuss at next TBWWB meeting 10/10/23

### Outdoor Recreation Project-McKinley Park/Soudan Park-See Report

- McKinley Park-Met with Flagship Recreation, pricing still not available for McKinley Park equipment. Playground Equipment taken out at the Campground. Stacy working on pricing. Funding extended until 12/2024. Grant through IRRR for various projects for



18k, St. Louis County has set aside 20k in a grant, and \$7500 will be coming from Stuntz Bay Association. Will have approximately 30k for the McKinley Park Playground.

- Soudan Park-Will reapply for DNR Outdoor Recreation grant. Stephanie looking at beautification of the entrance, landscape, and skating shack. Will set a date for a Public Meeting at the October Regular Board Meeting

Care Crossings Update-According to various sources the sale has fallen through at this time

Police Department Updates

- Impounded Vehicle 2015 KIA Truck-Chief Reing still waiting on paperwork
- Goombaz Updated Security Proposal-Chief Reing will work on Safety Grant, and Board will review once application is completed. Grant deadline is October 15<sup>th</sup>.
- Use of Deadly Force Policy-Chief Reing will work with Township Attorney on proper wording
- Summer Season Policy & Narcan Policy

Motion by Supervisor Tuchel to accept Summer Season Policy and Narcan Policy as presented

2<sup>nd</sup> by Supervisor Tekautz

Motion passed 3-0

Housing Institute-Clerk Sundahl has participated 2<sup>nd</sup> meeting @ Tower City Hall. Just starting to look at housing options and prioritize. Next forum beginning of November

Water Filtration Plant-Discussed during TBWWB report

Thompson Farm Road Relocation-JPJ working on updating a cost estimate for project, Supervisor Tuchel met with State and County Officials. MnDOT to review turn lane and acceleration lane. County fully supports project. This project available for several different grant programs. Clerk Sundahl to work with township attorney on an agreement with Lustek to share the road, and create an easement. Will discuss at Annual Meeting 2024. Need for discussion at the October meeting in regards to State Park Road Account funding.

Motion by Supervisor Tekautz to apply for and accept LRIP funding

2<sup>nd</sup> by Supervisor Tuchel

Motion passed 3-0

Capital Improvements Plan-(5-year plan) 4 items added by Supervisor Tuchel and Tom Gorsma to original plan created by JPJ Engineering, Board asked JPJ to update cost estimates to all. After cost estimate Board will need to prioritize list. Consensus by the Board to ask for assistance with the State Park Entrance Road at a later date. May be eligible for Get the Lead Out Program.

Motion by Supervisor Tuchel to complete CDBG Pre-App due 10/10/23

2<sup>nd</sup> by Supervisor Tekautz

Motion passed 3-0

Utility Easement-30 Center St

Motion by Supervisor Tuchel to accept the utility easement with the change from Church St to Center St, as Center St is the correct property address.

2<sup>nd</sup> by Supervisor Tekautz

Motion passed 3-0

Tool Cat-Public Works Supervisor Gorsma is asking for a replacement to the current John Deere equipment as it will be a better over-all piece of equipment for the work the department is doing. Quote included in packet. John Deere set for replacement last year. The cost for the same piece of equipment has increased by 18k since last year. John Deere worth approximate 10k if went out to bid.

Motion by Supervisor Tuchel to purchase the Bobcat UW56 per quote provided with the stipulation that the John Deere is sold upon taking possession of the new equipment

2<sup>nd</sup> by Supervisor Tekautz

Motion passed 3-0

**New Business**

Pay Bills as presented

Motion by Supervisor Tekautz to pay bills as presented

2<sup>nd</sup> by Supervisor Tuchel

Motion passed 3-0

Approve Partial Payment-Board to double check on reimbursement for material by list provided by Mesabi Bituminous.

➤ Project 20-741 McKinley Part Trail-\$164,947.79 to Mesabi Bit

➤ Project 22-003 2022 Infrastructure Improvements-\$195,617.28 to Mesabi Bit

Motion by Supervisor Tuchel to pay 20-741 and 22-003 as presented by Mesabi Bit when 2<sup>nd</sup> payment comes from IRRR

2<sup>nd</sup> by Supervisor Tekautz

Motion passed 3-0

➤ Project 21-847 Force Main-\$135,153.15 to 2EZ, Inc

➤ Project 21-847 Force Main Change Order-\$83,378.00 to 2EZ, Inc (decrease in project)

Motion by Supervisor Tekautz to make payment when PFA Loan comes through

2<sup>nd</sup> by Chairman Tomsich

Motion passed 2-0

Supervisor Tuchel abstained due to possible conflict of interest

Motion by Chairman Tomsich to accept change order as presented

2<sup>nd</sup> by Supervisor Tekautz

Motion passed 2-0

Supervisor Tuchel abstained due to possible conflict of interest

Township Property 270-0110-02910-Terry Driscoll submitted drawing asking the township to purchase a portion of the described property in the packet. On 10/26/23 Luke Poderzay asked Chairman Tomsich about purchasing the same portion of township property. Discussion by the



Board that the portion of the township parcel is estimated to be at a value of less than 25k. Portion of the property that both owners wish to purchase is approximately 150' by 25' Motion by Supervisor Tuchel to put that portion of property out to bid with sealed bids due by the next Regular Board Meeting on October 26<sup>th</sup> at 12 noon and costs of survey, subdivision and recording would be at purchasers' expense

2<sup>nd</sup> by Supervisor Tekautz

Motion passed 3-0

Wright Property @ 8 Church St-Homeowners dad called Chairman Tomsich to state that during the last heavy rain, water came into the garage at the property. Discussion by board and public works that during recent construction in front of the property that the Hwy side was lowered, road is crowned, possible rink side curbing in the future but that water would not have breached if blacktop had been completed before heavy rain. Supervisor Tuchel to talk with homeowner.

Old Settlers Financial Statement-Township asked for financial statement since the Township is sponsoring the group. Financial Statement so noted.

#### Resolutions

- 2023-21-IRRR Community Infrastructure Program
- 2023-22 Accepting Donations

Motion by Supervisor Tuchel to approve both resolutions as presented

2<sup>nd</sup> by Supervisor Tekautz

Motion passed 3-0

Poll Pad Device-Consensus by the Board to let County Elections know of interest in device for help with the registration and check-in process

**Next Regular Board Meeting**-September 26<sup>th</sup>, 12N @ Breitung Community Center

**Next Special Board Meeting**-October 10<sup>th</sup>, 10am @ Public Works Bldg, 41 1<sup>st</sup> Ave

#### **Adjourn**

Motion by Supervisor Tuchel to adjourn the meeting @ 2:40pm

2<sup>nd</sup> by Supervisor Tekautz

Motion passed 3-0

Respectfully Submitted

Dianna Sundahl  
Clerk, Breitung Township



**Township of Breitung Special Board Meeting 10-10-2023 at 10:00am. In Person Meeting in the Public Works Building, 41 1<sup>st</sup> Ave, Soudan, MN**

**Present In Person:**

**Board Members:** Chairman Tim Tomsich, Supervisor Chuck Tekautz, Supervisor Matt Tichel, Clerk Dianna Sundahl, Treasurer Jorgine Gornick (left @ 10:10am)

**Public:** Stephanie Ukkola-Timberjay (left @ 10:10am), Tom Gorsma-Public Works, Keith Mattila-Public Works, Daniel Manick-LU 49

Call to Order @ 10:00am by Chairman Tim Tomsich

**Acceptance of Agenda**

Motion by Supervisor Tichel to accept the agenda as presented

2<sup>nd</sup> by Supervisor Tekautz

Motion Passed 3-0

**Old Business**

**Resolution 2023-24**-Authorizing the Issuance and sale of the town of Breitung, Minnesota Temporary General Obligation Utility Revenue Note to the City of Tower, Minnesota

Discussion: Audit to be performed of the Sewer Records under Breitung Sewer and Water Department in 2024 on the year 2023. After initial audit, will request waiver of audit for the remainder of the PFA loan. Will receive 1 lump sum payment for PFA loan, paperwork should arrive in the mail for all to sign this week. Supervisor Tichel asked about the cost of the project vs amount of PFA loan, Chairman Tomsich explained match funding and cost of work to be done.

Motion to approve Resolution 2023-24 as presented by Supervisor Tekautz

2<sup>nd</sup> by Chairman Tomsich

Motion passed 2-0

Supervisor Tichel abstained due to possible conflict of interest

**McKinley Park Playground Equipment**-Chairman Tomsich presented updated quote with a total cost of \$31,805.84 from Flagship Equipment. Quote for border in the amount of \$4355.00, Public Works Department will install themselves, and look for material. Since cost of equipment is over \$25k, the township will need a second quote that Chairman Tomsich will follow up on and present at the next Regular Board Meeting.

Motion by Chairman Tomsich to close the meeting for Union Negotiations @ 10:10am

2<sup>nd</sup> by Supervisor Tekautz

Motion passed 3-0

**New Business:**

Local Union 49 Union Negotiations-ABR Daniel Manick presented Proposal of Changes with verbal explanations, History of Bargaining Unit Premium Rates and wage rates of neighboring Towns, Cities and Townships. No discussion, consensus by the Board to review documents and discuss a time and date for further negotiations at the next Regular Board Meeting on October 26<sup>th</sup>, 2023 @ 12Noon.

**Next Regular Board Meeting**-Thursday, October 26<sup>th</sup>, 2023 @ 12N Breitung Community Center

**Adjourn**

Motion by Supervisor Tichel to adjourn the meeting @ 10:50am

2<sup>nd</sup> by Supervisor Tekautz

Motion passed 3-0

Respectfully Submitted

Dianna Sundahl  
Clerk, Breitung Township

# TOWNSHIP OF BREITUNG

Sep-23

GENERAL	125,312.42
ROAD & BRIDGE	30,905.38
FIRE	36,098.29
PARK	71,608.37
RECREATION	(627.81)
POLICE	83,029.03
PROJECTS	150,405.06
WATER DEPT	51,163.69
ARPA	20,000.00
TOTALS	567,894.43





## BREITUNG POLICE DEPARTMENT

**SERVING BREITUNG TOWNSHIP, THE TOWN OF SOUDAN, AND THE CITY OF TOWER**

PHONE: (218) 753-6660

41 1<sup>ST</sup> AVE • P.O. BOX 6

DANIEL REING

FAX: (218) 753-2407

SOUDAN MN 55782

CHIEF OF POLICE

# September 2023 Police Report

**Calls for Service (ICRS):** 77 calls

**Citations: 6**

1 adult male cited for Driving After Revocation (DAR)

1 adult male cited for Driving After Revocation (DAR) This is also the same male as previously listed.

1 adult female cited for Speed (75/50)

1 adult male cited for Driving After Suspension (DAS)

1 adult male cited for Speed (67/50)

1 adult male cited for Speed (78/60)

**Assist Other Agencies:**

Assisted Ely Police with a felony pursuit and apprehension of an adult male subject.



# BREITUNG POLICE DEPARTMENT

**SERVING BREITUNG TOWNSHIP, THE TOWN OF SOUDAN, AND THE CITY OF TOWER**

**PHONE: (218) 753-6660**

**41 1<sup>ST</sup> AVE • P.O. BOX 6**

**DANIEL REING**

**FAX: (218) 753-2407**

**SOUDAN MN 55782**

**CHIEF OF POLICE**

September is a beautiful month for weather. I hope everyone was able to spend some time outdoors before the snow flies and stays. School is back in session and our seasonal residents are on their way out. We have received numerous complaints of speed in our area. We are remaining vigilant and watching for speeding. Please watch your speeds. We have also began preparing for our annual Tacos with Cops. It will be a bigger event this year. We hope that you come and join us. Have a good day.

Daniel Reing  
Chief of Police  
Breitung Police Department

**Breitung Fire & Rescue**  
**Box 337**  
**33 1<sup>st</sup> Ave.**  
**Soudan, Mn. 55782**

**September Fire Dept Report**

Our regular monthly fire department meeting was held on 9/12/2023.

This month's training consisted of continued training and familiarization of our new SCBA gear and our quarterly certification. This training was conducted in-house with our training officers.

We received two calls for service which consisted of an assist with Greenwood Township for a Water rescue which was cancelled due to minimum staffing and a Gas Leak in Tower.

We participated in the yearly Big Truck Night at the Breitung Park and had a great turn out.



# Road and Bridge Report

---

September 2023 Report

Usual mowing and trimming

Maintenance on gravel roads adding Class 5 and grading

Closed McKinley Park for the season

Removed playground equipment and mulch from McKinley Park

Lifted Docks

Put up Snow Fence

Poured Concrete Pads and installed bench on the Bike Trail

Extensive Maintenance on Equipment

Tree Removal and brushing

Worked with contractor on ditching and Culvert installation on Echo Pt Rd

Working with Contractors on various projects around town

Tom Gorsma

Maintenance Supervisor





1302 MCKINLEY PARK RD

▼ 270-0110-02910 X Q  
Show search results for ...



300ft

47.81822 -92.22704 Degrees



TOWNSHIP OF BREITUNG  
RESOLUTION NO. 2023-26

STATE OF MINNESOTA  
COUNTY OF ST. LOUIS  
TOWNSHIP OF BREITUNG

RESOLUTION AUTHORIZING THE TOWNSHIP OF BREITUNG TO  
SELL APPROXIMATELY 150' x 25' PORTION OF  
PARCEL CODE 270-0110-02910

WHEREAS, Parcel code 270-0110-02910 in the Town of Breitung, Has been estimated to be worth under \$25,000.

WHEREAS, The Town of Breitung deems the land is not needed for any public purpose and cannot foresee its need for any public purpose in the future.

WHEREAS, The Town of Breitung deems that the successful bidder will be responsible for any survey costs, subdivision of the parcel and all recording costs and the Town of Breitung will enter into a written agreement reflective of this.

NOW BE IT RESOLVED that the authorizing authority of the Township of Breitung does adopt this resolution. Chairman Tomsich, Supervisor Tekautz, Supervisor Tuchel

Upon vote taken, the following voted:

For:

Against:

Whereupon said Resolution NO. 2023-26 was declared duly passed and adopted this 26<sup>th</sup> day of October, 2023.

---

Timothy Tomsich, Chairman

---

Dianna Sunsdahl, Clerk



TOWNSHIP OF BREITUNG  
RESOLUTION NO. 2023-29

STATE OF MINNESOTA  
COUNTY OF ST. LOUIS  
TOWNSHIP OF BREITUNG

RESOLUTION AUTHORIZING THE TOWNSHIP OF BREITUNG TO  
MAKE APPLICATION TO AND ACCEPT FUNDS FROM CDBG  
COMMUNITY INFRASTRUCTURE FUND PROGRAM

WHEREAS THE authorizing authority approves of the application FOR  
THE Township of Breitung Infrastructure Improvements project FY 2024;  
and

WHEREAS THE authorizing authority agrees to accept funding for the  
underlying project if approved by the CDBG.

NOW BE IT RESOLVED that the authorizing authority of the Township of  
Breitung does adopt this resolution. Chairman Tomsich, Supervisor  
Tekautz, Supervisor Tuchel

Upon vote taken, the following voted:

For:

Against:

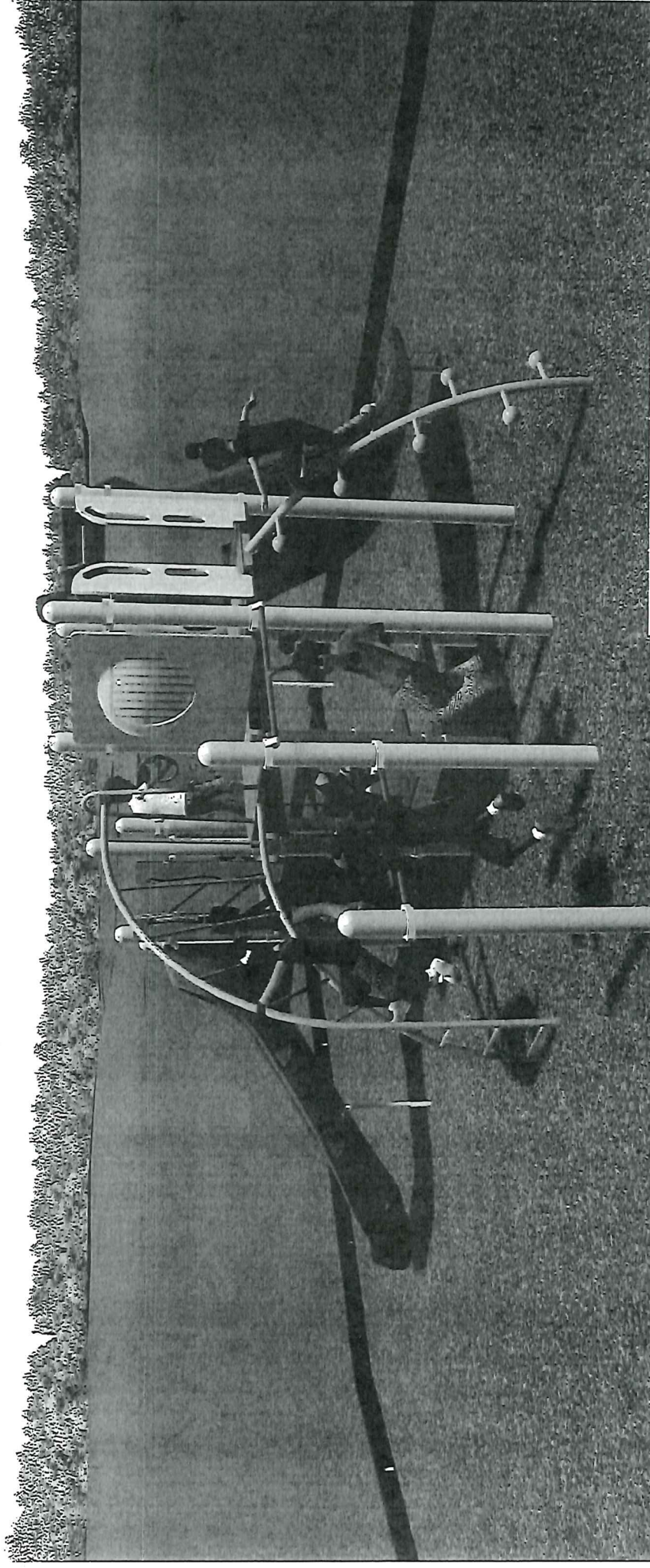
Whereupon said Resolution NO. 2023-29 was declared duly passed and  
adopted this 26<sup>th</sup> day of October 2023.

---

Timothy Tomsich – Chairman

---

Dianna Sundahl – Clerk



*slr*  
landscape  
structures

Soudan - McKinley Park Campground

Soudan\_McKinley 100923 • 10.9.2023



© 2023 Landscape Structures. All Rights Reserved





**Ship To:**

Soudan - McKinley Park Playground  
5563 Hoodoo Point Rd  
Soudan, MN 55782

**Please Make PO's & Contracts Out To:**

Landscape Structures, Inc.  
601 7th St. S  
Delano, MN 55328

Bill To:

Breitung Township  
PO Box 56  
Soudan, MN 55782

## Please Remit Payment To:

Landscape Structures, Inc.  
SDS 12-0395 PO Box 86  
Minneapolis, MN 55486-0395

*We are pleased to submit this proposal to supply the following products/services:*

[illegible]

Quotes from Landscape Structures, Inc. are subject to current Landscape Structures, Inc. policies as well as Terms & Conditions, Inclusions & Exclusions outlined below unless noted otherwise on this quote. Changes are subject to price adjustment. Sales tax, if applicable, will be applied unless a tax-exempt certificate is provided at the time of order entry. Customer deposits, if required, must be received before orders will be entered & installation scheduled. Purchases in excess of \$1,000.00 must be supported by a formal Purchase Order made out to Landscape Structures, Inc.

**Minnesota State Contract #218091**

**\*Terms: Net 30 days; 1.5% finance charge on balances over 30 days**

### Terms & Conditions

**Contract:** Seller's Copy of signed quote represents the contract between Seller and Buyer. This form supersedes all previous communications and negotiations and constitutes the entire agreement between the parties. Any changes to this contract are not binding unless jointly agreed in writing via Change Order.

### Project Scope (This Section For Quotes Including Full Installation)

#### Inclusions:

- One Mobilization
- Accepting & Unloading of Order Prior to Installation
- Unpacking of Play Equipment
- Assembly of Play Equipment
- Placing, Digging or Surface Mounting Equipment (as specified)
- Concrete for Play Equipment Footings
- Standard Insurance Offer (Detail Provided Upon Request)
- Standard Warranty Offer (Detail Provided Upon Request)
- Standard Wage Rates

#### Exclusions (Unless Specifically Quoted):

- Storage or Security of Equipment
- Private Utility Locates (irrigation, low voltage, lighting, etc.)
- Additional Labor Due to Site Access. Require 8' Wide Clearance from Staging Area to Play Space.
- Additional Labor and/or Related Costs Due to Subsurface Conditions (Rock, Hardpan, Heavy Clay, Ground Water, etc.)
- Additional Labor and/or Related Costs Due to Working in Unstable Soils (Sand, Pea Rock, Mud, Poor Site Drainage, etc.)
- Offsite Removal of Spoils From Footing Holes or Other Excavation. Can be stockpiled for owner removal or left in play space
- Disposal of Packing Material. Can be Stockpiled for Owner Removal or Deposited in Owners Onsite Dumpster
- Removal of Existing Play Equipment, Border or Safety Surfacing Material
- Site Work of Any Kind. Exclusions include, site grading (owner to provide max slope of 1%), site restoration, drainage, etc.
- Border for Play Space
- Bonding of Any Type
- Permits of Any Kind

DRAFT

### Acceptance of Quotation:

Accepted By (Print)	Tim Tomisch, Chairman	PO#:	
Signature:		Email:	chairman@breitungtownship.org
Title:		Phone:	
Date:		Purchase Amount:	\$31,805.84

  
landscape  
structures®



Date 10/9/2023  
 Expires 11/8/2023  
 Quote: Breitung Township  
 Contact: Tim Tomisch, Chairman  
 Phone: 218-780-5310  
 Email: [chairman@breitungtownship.org](mailto:chairman@breitungtownship.org)



**Ship To:**

Soudan - McKinley Park Playground  
 5563 Hoodoo Point Rd  
 Soudan, MN 55782

**Please Make PO's & Contracts Out To:**

Flagship Recreation  
 11123 Upper 33rd St. N  
 Lake Elmo, MN 55042

**Bill To:**

Breitung Township  
 PO Box 56  
 Soudan, MN 55782

**Please Remit Payment To:**

Flagship Recreation  
 11123 Upper 33rd St. N  
 Lake Elmo, MN 55042

*We are pleased to submit this proposal to supply the following products/services:*

QTY	ITEM #	Description	UNIT PRICE	EXT. PRICE
	Design	Soudan - McKinley Park Playground - Oct9-2023-JT		
		<i>Playground Equipment &amp; State Contract Discount on Landscape Structures Quote</i>		
0	MOB	Mobilization - Transport Construction Equip to Job Site	Owner	\$0.00
0	DUMPSTER	Dumpster - Disposal / Equipment Packing (30 Yard)	Owner	\$0.00
0	SITE WORK	Demo/Disposal of Equipment & Excavation (existing container)	Owner	\$0.00
50	BORDER	Plastic Timber Border & ADA Ramp - Materials Only - Owner Install		\$3,630.00
0	INSTALL	Playground Installation by Owner Per Manufacturer Instructions	Owner	\$0.00
0	DRAINAGE	Drainage Pea Rock (3/8" Crushed) - 3" (Ton)	Owner	\$0.00
0	DRAINAGE	Drain Tile per Drainage Plan / Outlet Stub(s) Req'd Inside Play Container	Owner	\$0.00
0	SURFACING	GeoTextile Fabric (Material & Installation) Sq Ft	Owner	\$0.00
0	SURFACING	EWf - Playground Safety Surfacing (CY)	Owner	\$0.00
		<i>Safety Surfacing Recommended per Manufacturer and IPEMA Guidelines</i>		
0	RESTORE	Backfill Border w/ TopSoil or Class 5 to Stabilize Border	Owner	\$0.00
		<i>No Mark-Ups on Freight per State Contract / Customer Offload &amp; Store Materials</i>		
			Subtotal	\$3,630.00
			Freight	\$725.00
			Sales Tax	Tax Exempt Cert
			Total	\$4,355.00

Quotes from Flagship Recreation. are subject to current Flagship Recreation policies as well as Terms & Conditions, Inclusions & Exclusions outlined below unless noted otherwise on this quote. Changes are subject to price adjustment. Sales tax, if applicable, will be applied unless a tax-exempt certificate is provided at the time of order entry. Customer deposits, if required, must be received before orders will be entered & installation scheduled. Purchases in excess of \$1,000.00 must be supported by a formal Purchase Order made out to Flagship

**Minnesota State Contract #218091**

**\*Terms: Net 30 days; 1.5% finance charge on balances over 30 days**

### Terms & Conditions

**Contract:** Seller's Copy of signed quote represents the contract between Seller and Buyer. This form supersedes all previous communications and negotiations and constitutes the entire agreement between the parties. Any changes to this contract are not binding unless jointly agreed in writing via Change Order.

### Project Scope (This Section For Quotes Including Installation)

#### Inclusions:

- One Mobilization
- Accepting & Unloading of Order Prior to Installation
- Unpacking of Play Equipment
- Assembly of Play Equipment
- Placing, Digging or Surface Mounting Equipment (as specified)
- Concrete for Play Equipment Footings
- Standard Insurance Offer (Detail Provided Upon Request)
- Standard Warranty Offer (Detail Provided Upon Request)
- Standard Wage Rates

#### Exclusions (Unless Specifically Quoted):



- Storage or Security of Equipment
- Private Utility Locates (irrigation, low voltage, lighting, etc.)
- Additional Labor Due to Site Access. Require 8' Wide Clearance from Staging Area to Play Space.
- Additional Labor and/or Related Costs Due to Subsurface Conditions (Rock, Hardpan, Heavy Clay, Ground Water, etc.)
- Additional Labor and/or Related Costs Due to Working in Unstable Soils (Sand, Pea Rock, Mud, Poor Site Drainage, etc.)
- Offsite Removal of Spoils From Footing Holes or Other Excavation. Can be stockpiled for owner removal or left in play space
- Disposal of Packing Material. Can be Stockpiled for Owner Removal or Deposited in Owners Onsite Dumpster
- Removal of Existing Play Equipment, Border or Safety Surfacing Material
- Site Work of Any Kind. Exclusions include, site grading (owner to provide max slope of 1%), site restoration, drainage, etc.
- Border for Play Space
- Bonding of Any Type
- Permits of Any Kind

DRAFT

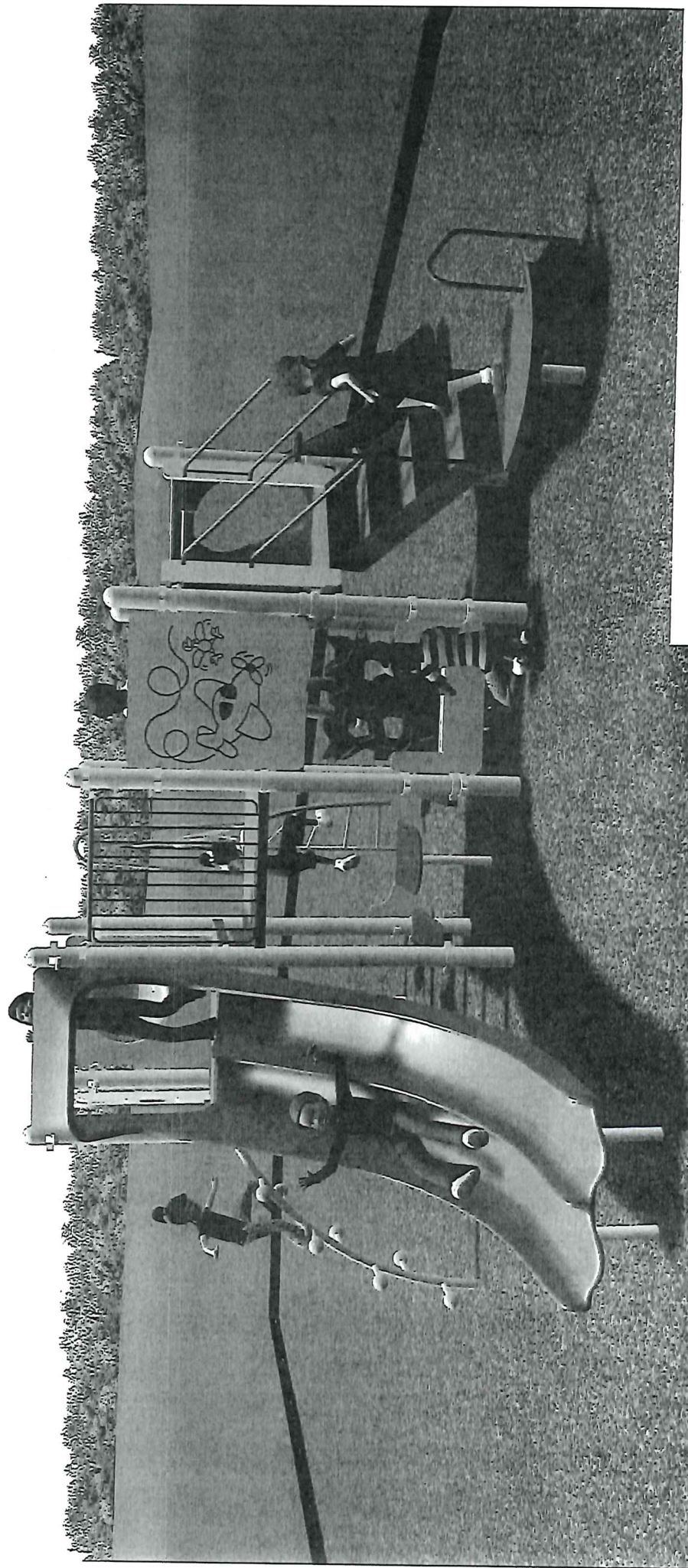
### Acceptance of Quotation:

Accepted By (Print)	Tim Tomisch, Chairman	PO#:	
Signature:		Email:	chairman@breitungtownship.org
Title:		Phone:	
Date:		Purchase Amount:	\$4,355.00



 <p>FLAGSHIP RECREATION 11123 UPPER 33RD ST N LAKE ELMO, MN 55082 763-550-7860 FLAGSHIPPLAY.COM @FLAGSHIPPLAY</p>	 <p>THIS PLAY AREA &amp; PLAY EQUIPMENT IS DESIGNED FOR AGE RANGES AS NOTED ON PLAN.</p>	<p>McKinley Park Campground</p> <p>5563 Hoodoo Point Rd Soudan, MN 55782</p>	<p>SALES REPRESENTATIVE: Stacy Strand</p> <p>DESIGNED BY: J.LTZ 10/9/23</p> <p>1/4" = 1'-0"</p> <p>SHEET</p> <p>LS101</p>
--	---	--	---





*landscapes*  
structures

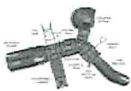
Soudan - McKinley Park Campground

Soudan\_McKinley 100923 • 10.9.2023



© 2023 Landscape Structures. All Rights Reserved





## Cascade

**\$34,559.00**

**Model Number: 11930**

PrimeTime is a perfect choice for schools, early learning centers, faith-based organizations and more. With a full range of climbers, slides, ladders and play activities, PrimeTime systems can be configured for any space and any budget, without compromising play or play value.

[REQUEST A QUOTE](#)

[COMPARE](#)



Minnesota / Wisconsin Playground  
5101 Highway 55, Suite 6000  
Golden Valley, Minnesota 55422  
Ph. 800-622-5425 | 763-546-7787  
Fax 763-546-5050 | tim@mnwplay.com

10/13/2023  
Quote #  
104377-01-02

CONSULTANT: TIM NEWGARD

## Breitung Township / McKinley Park Campground- Cascade Playground

Breitung Township / McKinley Park Campground  
Attn: Tim Tomsich  
33 1st Ave, PO Box 56  
Soudan, MN 55782  
Phone: 2187536020  
chairman@breitungtownship.org

Ship to Zip 55782

Quantity	Part #	Description	
1	178749	GameTime - Owner's Kit	
1	RDU	GameTime - Cascade	
			<b>Total \$37,837.18</b>

This quotation is subject to current Minnesota/Wisconsin Playground (MWP) policies as well as the following terms and conditions. Our quotation is based on shipment of all items at one time to a single destination, unless noted, and changes are subject to price adjustment. Purchases in excess of \$1,000.00 to be supported by your written purchase order made out to Minnesota/Wisconsin Playground.

Each quote is handled on a per order/project basis. Unless a long-term agreement is in place between purchaser and MWP, terms and conditions of this quotation shall be as outlined herein with no other requirements applicable.

Any changes made to product and/or services after initial order(s) has/have been received by MWP will result in production and/or schedule time frame modifications. Please contact your regional representative to receive a revised schedule for your order/project.

Indemnification; Owner/Owner's Representative will indemnify and hold Minnesota Playground, Inc., dba, Minnesota Wisconsin Playground (MWP), harmless for all claims, damages and related costs, including reasonable legal fees and costs, arising out of Owner/Owner's Representative's negligence or noncompliance with any of its commitments under this document. MWP will indemnify and hold Owner/Owner's Representative harmless for all claims, damages and related costs, including reasonable legal fees and costs, arising out of MWP's negligence or noncompliance with any of its commitments under this document.

Excusable Delays/Additional Costs: MWP, and/or its affiliates, shall be liable for default unless delay of performance, whether supplying materials only or including installation in accordance with our project scope, is caused by an occurrence beyond reasonable control of MWP, and/or its affiliates, such as, but not limited to, acts of Superior Force or the public enemy, acts of Government in either its sovereign or contractual capacity, fire, floods, epidemics, quarantine restrictions, strikes, unusually severe weather, delays of common carriers (for transportation of goods whether raw materials or finished product) and attainability of raw materials. Such events resulting in additional costs are not included in quoted amounts and shall be the responsibility of the Owner/Owner's Representative. Any additional costs shall be provided in writing for purchaser's records and shall be due upon payment of invoice.

This quotation is subject to policies in the current GameTime Park and Playground catalog and the following terms and conditions. Our quotation is based on shipment of all items at one time to a single destination, unless noted, and changes are subject to price adjustment. Purchases in excess of \$1,000.00 to be supported by your written purchase order made out to GameTime, c/o Minnesota/Wisconsin Playground.

Each quote is handled on a per order/project basis. Unless a long-term agreement is in place between purchaser and GameTime, terms and conditions of this quotation shall be as outlined herein with no other requirements applicable.

Any changes made to product and/or services after initial order(s) has/have been received by GameTime will result in production and/or schedule time frame modifications. Please contact your regional representative to receive a revised schedule for your order/project.





Minnesota / Wisconsin Playground  
5101 Highway 55, Suite 6000  
Golden Valley, Minnesota 55422  
Ph. 800-622-5425 | 763-546-7787  
Fax 763-546-5050 | tim@mnwplay.com

10/13/2023  
Quote #  
104377-01-02

CONSULTANT: TIM NEWGARD

## Breitung Township / McKinley Park Campground- Cascade Playground

Pricing: f.o.b. factory, firm for 15 days from date of quotation. If placing an order after expiration of quote, please contact our office for updated pricing. A tax-exempt certificate is needed at time of order entry for all orders whether from tax-supported government agencies or not. Sales tax, if applicable, will be added at time of invoice unless a tax exempt certificate is provided at time of order entry.

Payment terms: net 30 days for tax supported governmental agencies. Should this quotation be forwarded to an agency not listed on this quote, credit terms, as well as other terms and conditions herein, may be need to be altered. For instance, non-tax supported organization purchasing any or all products and/or services quoted herein may require full payment for that amount due at time of order entry. Remaining balance owed by tax supported agency, if any, shall still be net 30 days. A 1.5% per month finance charge will be imposed on all past due accounts. Equipment shall be invoiced separately from other services and shall be payable in advance of those services and project completion. Retainage not accepted.

Unless already on file, please include a tax exempt certificate upon order entry whether a tax supported government agency or other.

GameTime Standard Product Shipment: order shall ship within eight to ten weeks after GameTime's receipt and acceptance of your purchase order, color selections, approved submittals, and receipt of deposit, if required. Receipt of anything other than what is stated herein will not constitute an order and therefore no materials will be placed into production nor installation, if required, will be scheduled.

Freight charges: Prepaid & added

Exclusions: unless specifically included, this quotation excludes all site work and landscaping; removal of existing equipment; acceptance of equipment and off-loading; storage of goods prior to installation; equipment assembly and installation; safety surfacing; borders and drainage provisions.

### Order Information:

Bill To: \_\_\_\_\_ Ship To: \_\_\_\_\_

Company: \_\_\_\_\_ Project Name: \_\_\_\_\_

Attn: \_\_\_\_\_ Attn: \_\_\_\_\_

Address: \_\_\_\_\_ Address: \_\_\_\_\_

City, State, Zip: \_\_\_\_\_ City, State, Zip: \_\_\_\_\_

Contact: \_\_\_\_\_ Contact: \_\_\_\_\_

Tel: \_\_\_\_\_ Tel: \_\_\_\_\_

Fax: \_\_\_\_\_ Fax: \_\_\_\_\_

### Acceptance of quotation:

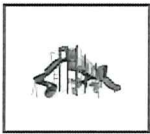
Accepted By (printed): \_\_\_\_\_ P.O. No: \_\_\_\_\_

Signature: \_\_\_\_\_ Date: \_\_\_\_\_

Title: \_\_\_\_\_ Phone: \_\_\_\_\_

Facsimile: \_\_\_\_\_ Purchase Amount: **\$37,837.18**





## Surf's Up

**\$39,867.00**

Model Number: PT18031

PrimeTime is a perfect choice for schools, early learning centers, faith-based organizations and more. With a full range of climbers, slides, ladders and play activities, PrimeTime systems can be configured for any space and any budget, without compromising play or play value.

[REQUEST A QUOTE](#)

[COMPARE](#)

## Specifications

### DESIGN FEATURES

- ☐ PrimeTime systems offer the maximum play value in a smaller footprint
- ☐ High-quality, affordable option that utilizes our patented DirectBolt connections
- ☐ Compact design with multiple levels of play activity







Minnesota / Wisconsin Playground  
5101 Highway 55, Suite 6000  
Golden Valley, Minnesota 55422  
Ph. 800-622-5425 | 763-546-7787  
Fax 763-546-5050 | tim@mnwplay.com

10/13/2023  
Quote #  
104377-01-01

CONSULTANT: TIM NEWGARD

## Breitung Township / McKinley Park Campground- Surf's Up Playground

Breitung Township / McKinley Park Campground  
Attn: Tim Tomsich  
33 1st Ave, PO Box 56  
Soudan, MN 55782  
Phone: 2187536020  
chairman@breitungtownship.org

Ship to Zip 55782

Quantity	Part #	Description		
1	178749	GameTime - Owner's Kit		
1	RDU	GameTime - Surf's Up		
			Total	\$43,029.48

This quotation is subject to current Minnesota/Wisconsin Playground (MWP) policies as well as the following terms and conditions. Our quotation is based on shipment of all items at one time to a single destination, unless noted, and changes are subject to price adjustment. Purchases in excess of \$1,000.00 to be supported by your written purchase order made out to Minnesota/Wisconsin Playground.

Each quote is handled on a per order/project basis. Unless a long-term agreement is in place between purchaser and MWP, terms and conditions of this quotation shall be as outlined herein with no other requirements applicable.

Any changes made to product and/or services after initial order(s) has/have been received by MWP will result in production and/or schedule time frame modifications. Please contact your regional representative to receive a revised schedule for your order/project.

Indemnification; Owner/Owner's Representative will indemnify and hold Minnesota Playground, Inc., dba, Minnesota Wisconsin Playground (MWP), harmless for all claims, damages and related costs, including reasonable legal fees and costs, arising out of Owner/Owner's Representative's negligence or noncompliance with any of its commitments under this document. MWP will indemnify and hold Owner/Owner's Representative harmless for all claims, damages and related costs, including reasonable legal fees and costs, arising out of MWP's negligence or noncompliance with any of its commitments under this document.

Excusable Delays/Additional Costs: MWP, and/or its affiliates, shall be liable for default unless delay of performance, whether supplying materials only or including installation in accordance with our project scope, is caused by an occurrence beyond reasonable control of MWP, and/or its affiliates, such as, but not limited to, acts of Superior Force or the public enemy, acts of Government in either its sovereign or contractual capacity, fire, floods, epidemics, quarantine restrictions, strikes, unusually severe weather, delays of common carriers (for transportation of goods whether raw materials or finished product) and attainability of raw materials. Such events resulting in additional costs are not included in quoted amounts and shall be the responsibility of the Owner/Owner's Representative. Any additional costs shall be provided in writing for purchaser's records and shall be due upon payment of invoice.

This quotation is subject to policies in the current GameTime Park and Playground catalog and the following terms and conditions. Our quotation is based on shipment of all items at one time to a single destination, unless noted, and changes are subject to price adjustment. Purchases in excess of \$1,000.00 to be supported by your written purchase order made out to GameTime, c/o Minnesota/Wisconsin Playground.

Each quote is handled on a per order/project basis. Unless a long-term agreement is in place between purchaser and GameTime, terms and conditions of this quotation shall be as outlined herein with no other requirements applicable.

Any changes made to product and/or services after initial order(s) has/have been received by GameTime will result in production and/or schedule time frame modifications. Please contact your regional representative to receive a revised schedule for your order/project.





Minnesota / Wisconsin Playground  
5101 Highway 55, Suite 6000  
Golden Valley, Minnesota 55422  
Ph. 800-622-5425 | 763-546-7787  
Fax 763-546-5050 | tim@mnwplay.com

10/13/2023  
Quote #  
104377-01-01

CONSULTANT: TIM NEWGARD

## Breitung Township / McKinley Park Campground- Surf's Up Playground

Pricing: f.o.b. factory, firm for 15 days from date of quotation. If placing an order after expiration of quote, please contact our office for updated pricing. A tax-exempt certificate is needed at time of order entry for all orders whether from tax-supported government agencies or not. Sales tax, if applicable, will be added at time of invoice unless a tax exempt certificate is provided at time of order entry.

Payment terms: net 30 days for tax supported governmental agencies. Should this quotation be forwarded to an agency not listed on this quote, credit terms, as well as other terms and conditions herein, may be need to be altered. For instance, non-tax supported organization purchasing any or all products and/or services quoted herein may require full payment for that amount due at time of order entry. Remaining balance owed by tax supported agency, if any, shall still be net 30 days. A 1.5% per month finance charge will be imposed on all past due accounts. Equipment shall be invoiced separately from other services and shall be payable in advance of those services and project completion. Retainage not accepted.

Unless already on file, please include a tax exempt certificate upon order entry whether a tax supported government agency or other.

GameTime Standard Product Shipment: order shall ship within eight to ten weeks after GameTime's receipt and acceptance of your purchase order, color selections, approved submittals, and receipt of deposit, if required. Receipt of anything other than what is stated herein will not constitute an order and therefore no materials will be placed into production nor installation, if required, will be scheduled.

Freight charges: Prepaid & added

Exclusions: unless specifically included, this quotation excludes all site work and landscaping; removal of existing equipment; acceptance of equipment and off-loading; storage of goods prior to installation; equipment assembly and installation; safety surfacing; borders and drainage provisions.

### Order Information:

Bill To: \_\_\_\_\_ Ship To: \_\_\_\_\_

Company: \_\_\_\_\_ Project Name: \_\_\_\_\_

Attn: \_\_\_\_\_ Attn: \_\_\_\_\_

Address: \_\_\_\_\_ Address: \_\_\_\_\_

City, State, Zip: \_\_\_\_\_ City, State, Zip: \_\_\_\_\_

Contact: \_\_\_\_\_ Contact: \_\_\_\_\_

Tel: \_\_\_\_\_ Tel: \_\_\_\_\_

Fax: \_\_\_\_\_ Fax: \_\_\_\_\_

### Acceptance of quotation:

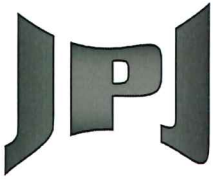
Accepted By (printed): \_\_\_\_\_ P.O. No: \_\_\_\_\_

Signature: \_\_\_\_\_ Date: \_\_\_\_\_

Title: \_\_\_\_\_ Phone: \_\_\_\_\_

Facsimile: \_\_\_\_\_ Purchase Amount: **\$43,029.48**





---

Engineering

Land Surveying

Site Development

## Memorandum

**To:** The Honorable Timothy Tomsich  
and Breitung Township Board

**From:** John P. Jamnick, P.E.

**Date:** October 4, 2023

**Cc:** Ms. Dianna Sunsdahl, Clerk

**Re:** Breitung Township Road Improvements – Technical Design Report

---

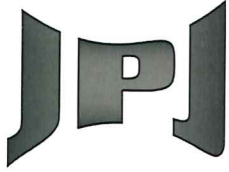
The Breitung Township Road Improvements project will improve safety for vehicles and ATVs and address the Township's ability to continue to operate its sand and gravel pit. The DNR is currently developing a new campground and ATV trail at the Lake Vermilion Soudan Underground Mine State Park which are scheduled to open in 2025.

The road's current connection to Hwy 169 is located on a curve and a hill which limits line of sight and is especially hazardous due to the gravel haul trucks and the increased park traffic.

The project will construct a 1,200-foot section of the 24' wide paved from Thompson Farm Road to the intersection of Hwy 169 approximately 0.2 miles east of the current location. See attached map. The project will also add a right-hand turn lane from TH 169 onto the road as required by MnDOT. Stormwater management and grading plans will be prepared for the construction of the relocated road.

The estimated project cost is \$633,200.





**BREITUNG TOWNSHIP  
THOMPSON FARM ROAD RELOCATION**

PROJECT NO. 23-218

October 4, 2023

***PRELIMINARY OPINION OF PROBABLE CONSTRUCTION COST***

NO.	ITEM	ESTIMATED QUANTITY	UNIT	UNIT PRICE	TOTAL PRICE
2021	MOBILIZATION	1.00	L.S.	\$45,000.00	\$45,000.00
2101	CLEARING AND GRUBBING	1.00	ACRE	\$4,000.00	\$4,000.00
2104	REMOVE BITUMINOUS PAVEMENT	280.00	SQ. YD.	\$10.00	\$2,800.00
2104	SAWING PAVEMENT	100.00	LIN. FT.	\$5.00	\$500.00
2105	MOVE DEBRIS PILES	1.00	L.S.	\$50,000.00	\$50,000.00
2105	COMMON EXCAVATION	3,100.00	CU. YD.	\$15.00	\$46,500.00
2105	GRANULAR BORROW	5,200.00	CU. YD.	\$18.00	\$93,600.00
2105	SELECT GRANULAR BORROW	1,950	CU. YD.	\$15.00	\$29,250.00
2112	GEOTEXTILE SEPARATION FABRIC, TYPE 5	3,780	SQ. YD.	\$2.00	\$7,560.00
2211	AGGREGATE BASE, CLASS 5 (CV)	1,900	CU. YD.	\$25.00	\$47,500.00
2221	AGGREGATE SHOULDERING, CLASS 5	400	CU. YD.	\$30.00	\$12,000.00
2360	TYPE SP WEARING COURSE	450	TON	\$100.00	\$45,000.00
2360	TYPE SP NON-WEARING COURSE	450	TON	\$100.00	\$45,000.00
2501	15" RCP CULVERT	100	LIN. FT.	\$80.00	\$8,000.00
2501	15" RCP APRON	4	EACH	\$625.00	\$2,500.00
2511	RANDOM RIPRAP	10	CU. YD.	\$100.00	\$1,000.00
2557	VEHICULAR GATE	1	EACH	\$5,000.00	\$5,000.00
2563	TRAFFIC CONTROL	1	L.S.	\$15,000.00	\$15,000.00
2564	FURNISH & INSTALL SIGN PANELS, TYPE	30	SQ. FT.	\$5.00	\$150.00
2573	SILT FENCE	2,000	LIN. FT.	\$3.00	\$6,000.00
2573	CONSTRUCTION SITE EXIT CONTROLS	1	L.S.	\$2,500.00	\$2,500.00
2573	CULVERT END CONTROLS	1	EACH	\$500.00	\$500.00
2575	TEMPORARY MULCH	1	ACRE	\$1,000.00	\$500.00
2575	SEEDING	1	ACRE	\$1,500.00	\$750.00
2575	EROSION CONTROL BLANKET	3,000	SQ. YD.	\$5.00	\$15,000.00
2582	4" BROKEN LINE PAVEMENT MARKINGS	1,000	LIN. FT.	\$2.00	\$2,000.00
2582	4" SOLID LINE PAVEMENT MARKINGS	1,000	LIN. FT.	\$3.00	\$3,000.00
2582	8" SOLID LINE PAVEMENT MARKINGS	1,000	LIN. FT.	\$4.00	\$4,000.00

TOTAL PROBABLE CONSTRUCTION COST	\$494,610.00
CONTINGENCIES	\$49,461.00
LEGAL, FISCAL, AND ENGINEERING	\$89,029.80
TOTAL PROBABLE PROJECT COST	\$633,100.80

<b>SAY</b>	<b>\$633,200</b>
------------	------------------





Engineering  
Land Surveying  
Site Development

JPJ ENGINEERING, INC  
425 Grant Street  
Hibbing, MN 55746  
(218) 262-5528

5670 Miller Trunk Hwy  
Duluth, MN 55811  
(218) 720-6219

www.jpjeng.com

BREITLING TOWNSHIP  
ROAD IMPROVEMENTS  
BREITLING TOWNSHIP

SITE PLAN

REVISION DATE	DESCRIPTION

SURVEYED  
DESIGNED  
DRAWN  
CHECKED

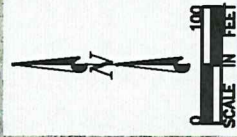
I hereby certify that this plan was prepared by me or under my direct supervision and that I am a duly Licensed Professional Engineer under the laws of the State of Minnesota.

**PRELIMINARY**  
JOHN P. JENSEN, P.E.

DATE: \_\_\_\_\_ LIC. NO.: 18607

20-218  
PROJECT NO.

Call 48 hours before digging  
**GOPHER STATE ONE CALL**  
Twin Cities Area 855-464-1002  
MN, Toll Free 1-800-252-1106



NOTE:  
THE SUBSURFACE UTILITY INFORMATION IN THIS PLAN WAS OBTAINED FROM THE QUALITY LEVEL 1 SURVEYING AND MAPPING COMPANY, INC. (Q1/SURF 3A-02), ENTITLED "STANDARD GUIDELINES FOR THE COLLECTION AND DEPICTION OF EXISTING SUBSURFACE UTILITY DATA."

NOTE:  
ANY PUBLIC UTILITIES SHOWN ON THIS PLAN ARE ONLY FOR INFORMATION AND MUST BE VERIFIED BY THE CONTRACTOR.  
OTHER UTILITIES MAY EXIST AND IT SHALL BE THE RESPONSIBILITY OF THE CONTRACTOR TO OBTAIN THE LOCATION OF SUCH.



**TOWNSHIP OF BREITUNG  
RESOLUTION NO. 2023-27**

STATE OF MINNESOTA  
COUNTY OF ST. LOUIS  
TOWNSHIP OF BREITUNG

**RESOLUTION AUTHORIZING THE TOWNSHIP OF BREITUNG TO  
MAKE APPLICATION TO AND ACCEPT FUNDS FROM THE STATE OF MINNESOTA-LOCAL ROAD IMPROVEMENT  
PROGRAM**

**Local Road Improvement Program Grant Agreement  
Grant Terms and Conditions  
*October 26<sup>th</sup>, 2023***

**WHEREAS** \$102.967 million in LRIP funding is available, with a cap of \$1.5 million for each project

**WHEREAS** Breitung Township acknowledges that LRIP funds can be used on reasonable elements associated with roadway construction and that other costs, including but not limited to: consultant engineering and inspection, utility construction, as well as construction costs above the LRIP award will need to have alternate funding sources

**WHEREAS** The existing Thompson Farm Road from HWY 169 to the corner turning south to the Taconite Trail has transportation deficiencies due to conflicting mix of users at an escalating rate and unsafe intersection with HWY 169

**WHEREAS** The relocation will alleviate the hazardous intersection and unsafe mix of users by moving the road to the eastern edge of Breitung Township property

**WHEREAS** Previous planning efforts on the corridor included an alternative to move the road to the western edge of Breitung Township property but would infringe upon St Louis County's Landfill entrance and cause a complex and serious mix of users and unsafe conditions.

**WHEREAS** The road is considered a route of regional significance due to , or why it is eligible for the rural road provides for a connection to regional tourist destination, is a connection to the regional system via MN Highway 169/1 and is part of an economic development plan

**WHEREAS** the relocation will benefit multiple parties including but not limited to Breitung Township public works and Law Enforcement, MN Department of Natural Resources, MN Department of Transportation, St. Louis County ATV users across the state and other visitors and tourists, private companies and individual property owners.

**WHEREAS** the relocation will include multi-modal and non-motorized components such as personal and commercial vehicle traffic, ATV users of all types, snowmobiles and hikers and bikers.

**WHEREAS** the probable construction cost of \$494,610 plus a 10% contingency estimate of \$49,461 totals a construction cost estimate of \$544,071 and is planned for completion in year 2025

**WHEREAS** Other types of funding sources are duly being investigated and applying for and are not secure at this time

**WHEREAS** coordination efforts with St. Louis County have included the alternative of relocating the road to the western edge of Breitung Township, multiple meetings and options considered and site visits with St. Louis County personnel



**THEREFORE, BE IT RESOLVED THAT:**

1. The town board of the Township of Breitung supports the Road Improvement Project and agrees to maintain such improvements
2. The town board of the Township of Breitung supports submittal of the LRIP application
3. The Township of Breitung provides assurance that the township will pay all costs associated with the project beyond the LRIP grant award.
4. The town board of the Township of Breitung seeks the support by resolution of the county to act as project sponsor for the project should the township be selected to receive LRIP funds, and that such sponsorship shall include the following responsibilities:
  - Be the fiscal agent on behalf of the community and have funds flow from MnDOT to the county to the contractor
  - Request SAP/SP number for the project
  - Ensure the project meets milestones and dates
  - Assist local agency in execution of a grant agreement
  - Develop, review and/or approve the plan
  - Submit plan, engineers estimate, and proposal to the DSAE
  - Advertise, let, and award the project
  - Submit pay requests to State Aid
  - Communicate progress and updates with the DSAEs and State Aid State Programs Engineer
  - Ensure that the project receives adequate supervision and inspection
  - Assist with project close out

**NOW THEREFORE**, be it resolved that Breitung Township does hereby agree to the terms and conditions of the grant consistent with Minnesota Statutes, section 174.52, and will pay any additional amount by which the cost exceeds the estimate, and will return to the Local Road Improvement Fund any amount appropriated for the project but not required. The proper Township Officers-Chairman Timothy Tomsich, Supervisor Charles Tekautz and Supervisor Matthew Tichel are authorized to execute a grant agreement and any amendments thereto with the Commissioner of Transportation concerning the above-referenced grant.

Upon vote taken, the following voted:

For:

Against:

Whereupon said Resolution NO. 2023-27 was declared duly passed and adopted this 26<sup>th</sup>, day of October 2023.

---

Timothy Tomsich-Chairman

---

Dianna Sundahl-Clerk

**Resolution 2023-#28**

**Authorization to enter into a Cooperative Agreement with  
St Louis County to Receive SPRA Funds for the Breitung  
Township Road Improvements**

Breitung Township

Of St Louis County, Minnesota

**WHEREAS**, the Township of Breitung desires to enter into a Cooperative Agreement with St Louis County, Minnesota to receive State Park Road Account Funding the Breitung Township Road Improvements in the amount of \$633,200 for improvements to improve safety for vehicles and ATV's and address the Township's ability to continue to operate its sand and gravel pit in Breitung Township; Breitung Township Project No. 23-218; and

**WHEREAS**, The County is required to act as the fiscal agent and contract administrator for the State of Minnesota in administering the SPRA funds, and shall administer the construction contract for the Project; and

**WHEREAS**, Breitung Township shall prepare a plan for construction of the Project; and

**WHEREAS**, Breitung Township will be responsible for 100 percent of the cost to complete the Project in excess of SPRA funds authorized by the County

**NOW, THEREFORE, BE IT RESOLVED**, that the Township of Breitung, authorizes the appropriate Township officials to enter into the Cooperative Agreement with St Louis County for SPRA funding for the Breitung Township Road Improvements

Passed and Adopted by the Board on this 26<sup>th</sup> day of October, 2023.

Upon vote taken, the following voted: Chairman Tomsich, Supervisor Tekautz, Supervisor Tuchel

FOR:

AGAINST:

\_\_\_\_\_  
By: Timothy Tomsich  
Its Chair

ATTEST: \_\_\_\_\_  
By: Dianna Sundahl  
Its Township Clerk

## VERMILION PARK INN

30 Center Street  
Soudan, MN 55782  
218-753-2333

September 28, 2023

To the Breitung Township,

As you know, we have been having flooding at the Vermilion Park Inn ever since the spillway was put through our yard and the flooding began after the new sewer was put in two years ago. Something must be done about this. We cannot get insurance for this as it has happened three or four times since the spillway and runoff from Center Street has gone directly through our yard and into our basement. We actually have video documentation of the water breaching our foundation and pouring in like a fountain. We have had it looked at by several people who know sewer systems and have been told that it never should have been designed this way. Thousands of gallons of water come directly down the hill from the Soudan Store driveway and directly into our yard. It takes hours and hours to clean up the mess, we must cancel reservations, replace at least half the carpet at a cost of \$4,000, move furniture and cancel classroom events.

I have been told that it is illegal to put storm runoff through anyone's yard. That storm sewer should have been diverted to the other side of Main Street or to a manhole connecting to the storm sewer system. I would like to remind you that the same people who installed the sewer system cut off the entire south side sewer system that caused flooding and fecal matter to flood our party room. You brought in carpet cleaners but that was not sufficient. They had to dig up the entire area to the north of our building to rectify that error.

Last week, Mike Skorich, Tom Burns and I signed a paper stating we would never build over the sewer system. We have been good neighbors, have beautified the area, have given 20 feet of our land to the Township to build an alley between us and the Sunsdahls when they bought the house next door and have always opened our doors for community events.

You may be interested to know that I have cancelled the contract to sell the Inn to the woman who wanted to put a sobriety house here. Whereas I think it would have been a benefit to the community, I will put it back on the market and operate it as a B&B through next August. If someone buys it before that time as a B&B so be it. If not, the sobriety house has an option to purchase it and take it from there.

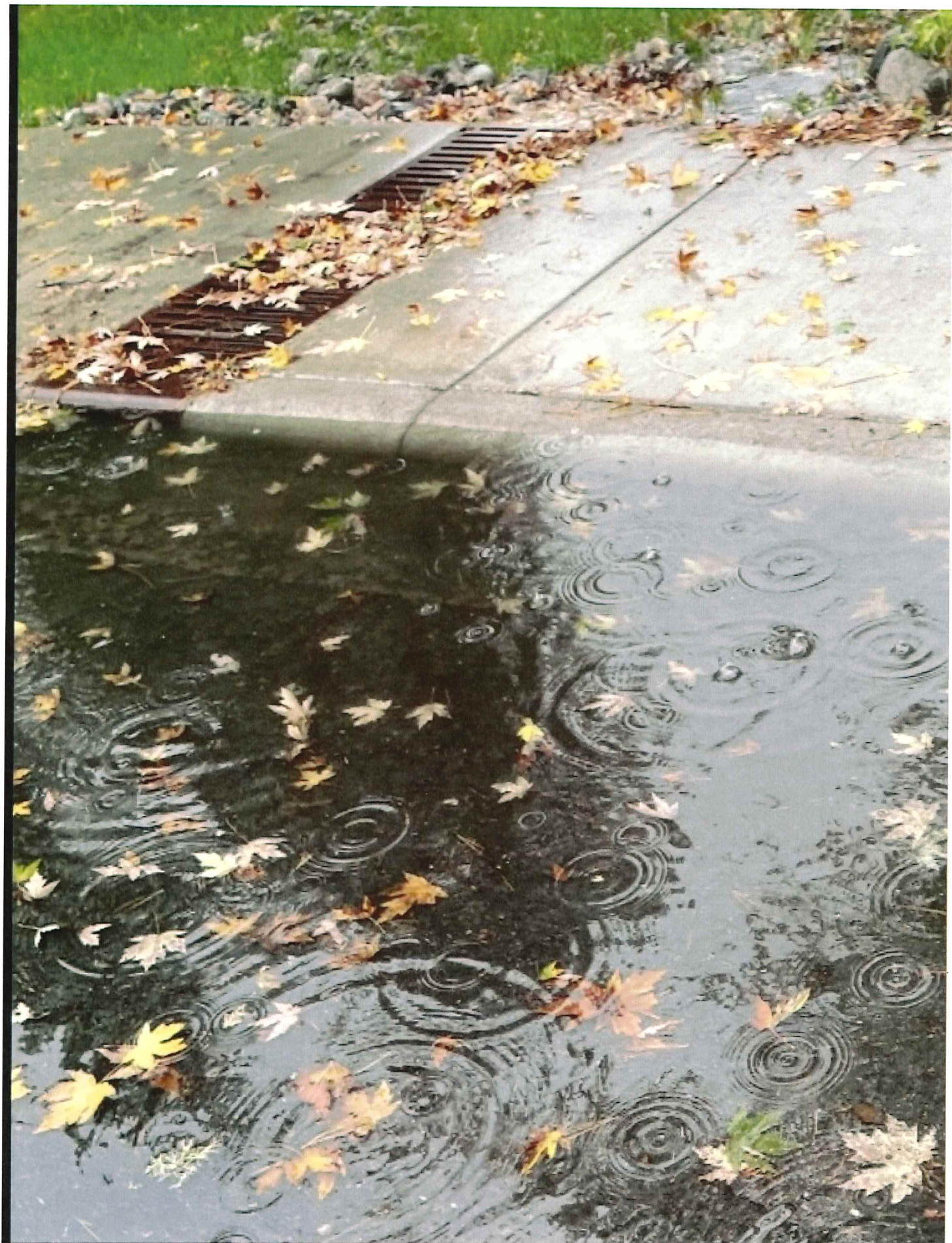
I know you are meeting today at 1 p.m. but I cannot be there due to a funeral for Don Halunen, who was a dear friend. Please help resolve this situation, the impact to our business and bottom line is significant. Please let me hear from you.

Sincerely, Mary Batinich

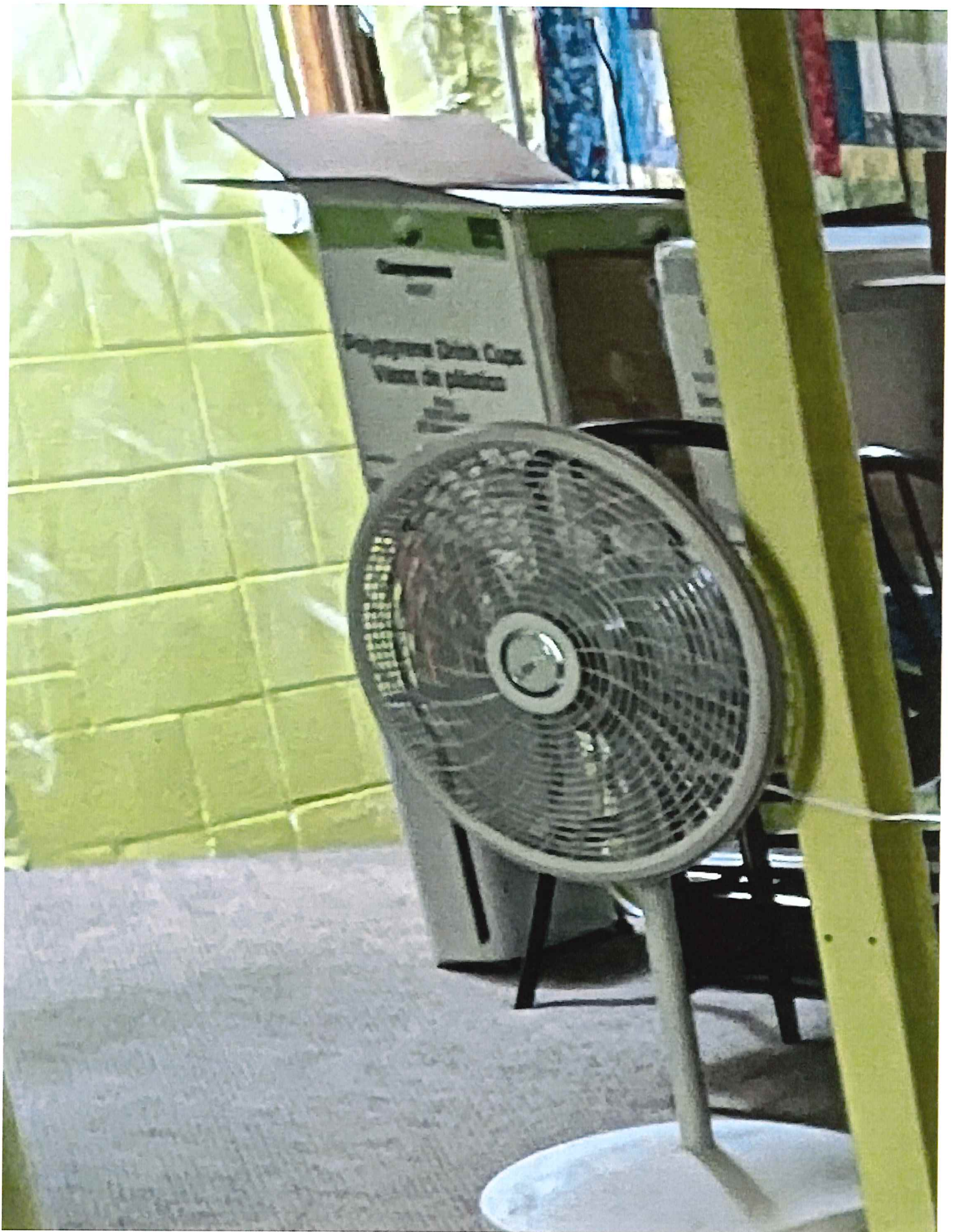
*Mary Batinich*

*612-360-2079*









**From:** David Swanson <davidswanson@alumni.nmu.edu>  
**Sent:** Wednesday, October 18, 2023 2:35 PM  
**To:** fire@breitungtownship.org  
**Subject:** David Swanson Resignation Letter Breitung Fire

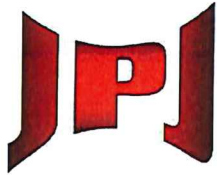
I, David Swanson hereby resign from the Breitung Fire Department effective October 18, 2023.

It has been a pleasure.

Thank you,

David Swanson





---

Engineering

Land Surveying

Site Development

October 24, 2023

The Honorable Tim Tomsich  
Chairman, Breitung Township  
P.O. Box 56  
Soudan, MN 55782

**Re: McKinley Park Trail Rebid  
Project No. 20-741**

Dear Chairman Tomsich:

Enclosed is Partial Payment Estimate No. 2 for the McKinley Park Trail Rebid project. We recommend payment of \$154,732.73 to Mesabi Bituminous, Inc., P.O. Box 728, Gilbert, MN 55741 upon receipt of certified payroll reports.

After your review and approval, please sign and date the partial payment estimate, and return a copy to our office.

If you have any questions, please do not hesitate to contact our office.

Sincerely,

JPJ Engineering, Inc.



A handwritten signature in black ink that reads 'John P. Jamnick'. The signature is written in a cursive, flowing style.

John P. Jamnick, P.E.

JPJ/dj

Enclosure

# PARTIAL PAYMENT ESTIMATE

<b>PROJECT:</b> McKinley Park Trail Rebid		<b>PROJECT NO.:</b> 20-741	<b>DATE:</b> October 24, 2023 <b>PAY ESTIMATE NO.:</b> 2 <b>PAGE 1 OF 2</b>
<b>OWNER:</b> Breitung Township P.O. Box 56 Soudan, MN 55782		<b>CONTRACTOR:</b> Mesabi Bituminous, Inc. P.O. Box 728 Gilbert, MN 55741	<b>PERIOD OF ESTIMATE</b>  <b>FROM:</b> September 5, 2023 <b>TO:</b> October 21, 2023
<b>CONTRACT CHANGE ORDER SUMMARY</b>		<b>ESTIMATE</b>	
No.	Amount		
	Additions	Deductions	
			1. Original Contract \$361,640.00
			2. Change Orders \$0.00
			3. Revised Contract (1+2) \$361,640.00
			4. Work Completed* \$336,505.81
			5. Stored Materials \$0.00
			6. Subtotal (4+5) \$336,505.81
			7. Retainage 5% (\$16,825.29)
			8. Previous Payments (\$164,947.79)
<b>TOTALS</b>			9. Amount Due (6-7-8) \$154,732.73
<b>NET CHANGE</b>			*Detailed breakdown attached
<b>CONTRACT TIME</b>			
Original (days): Revised:		On Schedule <input type="checkbox"/> Yes <input checked="" type="checkbox"/> No	Starting Date: December 20, 2022 Substantial Completion: September 1, 2023 Projected Completion: November 1, 2023
<b>CONTRACTOR'S CERTIFICATION:</b> The undersigned Contractor certifies, to the best of its knowledge, the following: (1) All previous progress payments received from Owner on account of Work done under the Contract have been applied on account to discharge Contractor's legitimate obligations incurred in connection with the Work covered by prior Applications for Payment; (2) Title to all Work, materials and equipment incorporated in said Work, or otherwise listed in or covered by this Application for Payment, will pass to Owner at time of payment free and clear of all Liens, security interests, and encumbrances (except such as are covered by a bond acceptable to Owner indemnifying Owner against any such Liens, security interest, or encumbrances); and (3) All the Work covered by this Application for Payment is in accordance with the Contract Documents and is not defective.		<b>ENGINEER'S CERTIFICATION:</b> The undersigned certifies that to the best of their knowledge and belief and to the extent of their assigned Contract responsibilities, the quantities shown in this estimate are correct and that the work has been performed in accordance with the Contract Documents.	
Contractor: Mesabi Bituminous, Inc. By  Date 10/24/23		Engineer: JPJ Engineering, Inc. By  Date 10/24/23	
APPROVED BY OWNER: Owner: Breitung Township By _____ Date _____			

## PAY ESTIMATE NO. 2

DATE: October 24, 2023

OWNER: Breitung Township

PROJECT: McKinley Park Trail Rebid

CONTRACTOR: Mesabi Bituminous, Inc., P.O. Box 728, Gilbert, MN 55741

### BASE BID

ITEM NO.	DESCRIPTION	QUAN. BID	UNIT	UNIT PRICE	QUANTITY THIS PERIOD	AMOUNT THIS PERIOD	QUANTITY TO DATE	AMOUNT TO DATE
2101	CLEARING & GRUBBING	2	ACRE	\$10,000.00	0	\$0.00	2	\$20,000.00
2104	RMV BIT PAVEMENT	1,060	S.Y.	\$2.00	50	\$100.00	483	\$966.00
2104	RMV PIPE CULVERT	113	L.F.	\$10.00	0	\$0.00	202	\$2,020.00
2104	RMV & RELOCATE SIGN	1	EACH	\$100.00	0	\$0.00	0	\$0.00
2105	TOPSOIL BORROW	516	C.Y.	\$50.00	0	\$0.00	550	\$27,500.00
2105	COMMON EXCAVATION	100	C.Y.	\$20.00	0	\$0.00	611	\$12,220.00
2105	COMMON BORROW	6,350	C.Y.	\$14.00	0	\$0.00	4,543	\$63,602.00
2211	AGG BASE, CLASS 5 (CV)	940	C.Y.	\$28.00	284	\$7,952.00	584	\$16,352.00
2215	RECLAMATION	6,850	S.Y.	\$2.10	5,920	\$12,432.00	5,920	\$12,432.00
2221	AGG SHOULDERING	50	C.Y.	\$40.00	92	\$3,680.00	92	\$3,680.00
2360	TYPE SP WEARING COURSE (2-1/2")	1,325	TON	\$96.00	1,429.61	\$137,242.56	1,429.61	\$137,242.56
2501	12" CMP CULVERT	120	L.F.	\$50.00	0	\$0.00	266	\$13,300.00
2501	12" CMP APRON	8	EACH	\$365.00	0	\$0.00	10	\$3,650.00
2506	ADJUST FRAME & RING CASTING	4	EACH	\$250.00	0	\$0.00	1	\$250.00
2511	RANDOM RIPRAP, CLASS III	20	C.Y.	\$40.00	0	\$0.00	60	\$2,400.00
2540	BENCH	3	EACH	\$2,700.00	0	\$0.00	0	\$0.00
2573	SILT FENCE, MACHINE SLICED	4,500	L.F.	\$5.25	0	\$0.00	2,545	\$13,361.25
2573	CULVERT END CONTROLS	4	EACH	\$210.00	7	\$1,470.00	8	\$1,680.00
2575	TEMPORARY MULCH	2	ACRE	\$1,575.00	0	\$0.00	0	\$0.00
2575	SEEDING	2	ACRE	\$2,625.00	0	\$0.00	1.2	\$3,150.00
CO #1	EROSION CONTROL BLANKET	0	S.Y.	\$3.00	0	\$0.00	900	\$2,700.00

TOTAL WORK COMPLETED THIS PERIOD - Base Bid.....

\$162,876.56

TOTAL WORK COMPLETED TO DATE - Base Bid.....

\$336,505.81



FRANDSEN BANK - TOWER  
PO BOX 499  
TOWER, MN 55790

Page: 1  
Customer: 515623 10/10/2023

Address Service Requested

**FRANDSEN BANK & TRUST**

*Real people. Real results.*

Telephone: 218-753-6100



TOWNSHIP OF BREITUNG  
PO BOX 56  
SOUDAN, MN 55782-0056

=====

PUBLIC FUND Certificate XXXXXXXXXX8268

=====

Original Issue Date:	01/27/2023	Interest Rate:	3.5000 %
Original Issue Value:	100,000.00	Maturity Date:	10/27/2023
		Term:	9 Months

\*\*\*\*\*

\* A p p r o a c h i n g   R e n e w a l   A d v i c e \*

\*\*\*\*\*

Your certificate will mature on 10/27/2023. Interest will be compounded on an at maturity basis. Interest will be credited to your certificate at maturity. The current balance of your PUBLIC FUND Certificate is 100,000.00. If the certificate renews, the new maturity date will be 07/27/2024.

\*\*\*Effective with this renewal: Early withdrawal penalty will be equal to 2% of principal withdrawn. Interest will not compound. Interest will be credited to your account at maturity. We will no longer issue interest checks on certificates. If you would prefer that we credit one of your accounts with us, please contact your local office. Thank you.\*\*\*

The Annual Percentage Yield and interest rate have not yet been determined. They will be available on 10/27/2023. Please call the phone number listed at the top of this notice on or after 10/27/2023 to obtain current rate information.



1-FDSN-NOTC-01 231010  
00001-00001-000111 000572161



# Saint Louis County

Planning and Community Development Department • [www.stlouiscountymn.gov](http://www.stlouiscountymn.gov)  
[landuseinfo@stlouiscountymn.gov](mailto:landuseinfo@stlouiscountymn.gov)

**Darren Jablonsky**  
Interim Director

October 13, 2023

Diane Sundahl, Clerk  
P.O. Box 56  
Soudan, MN 55782

VIA EMAIL: [clerk@breitungtownship.org](mailto:clerk@breitungtownship.org)

You have received the enclosed land use permit application because the proposal is within the boundaries of the Fayal Sanitary District. Please review the application to ensure that the proposal will not negatively affect the district's infrastructure.

If you have no objections to the permit being issued as proposed, please sign below and return this form to our office. Please contact LaShawn Rush by phone at (218) 725-5039 or by email at [rushl@stlouiscountymn.gov](mailto:rushl@stlouiscountymn.gov) with any questions.

**PID Number:** 270-0110-01540

**Applicant Name:** Daniel Patnode

**Site Address:** 14 Jasper St

- ☐ The proposal may be issued as proposed.
- ☐ The district has the following concerns:

\_\_\_\_\_  
Signature

\_\_\_\_\_  
Title

\_\_\_\_\_  
Date

☐ **Duluth Office**  
Government Services Center  
320 W 2<sup>nd</sup> St, Ste 301  
Duluth, MN 55802  
Phone: (218) 725-5000  
Toll Free in MN: 1-800-450-9777  
Fax: (218) 725-5029

☒ **Virginia Office**  
Government Services Center  
201 South 3<sup>rd</sup> Avenue West  
Virginia, MN 55792  
Phone: (218) 749-7103  
Toll Free in MN: 1-800-450-9777  
Fax: (218) 749-7194





# Land Use Permit

APPLICATION St. Louis County, Minnesota

Permit #

Permit #

About: This application is used to apply for a Land Use Permit. Applicants will need to attach the appropriate worksheet(s) in order to process. For more information, see our website at: [www.stlouiscountymn.gov/land-use](http://www.stlouiscountymn.gov/land-use)

PROPERTY IDENTIFICATION NUMBER (PIN) PIN is found on your Property Tax Statement

*Primary PIN	270-0110-01540	Associated PIN	
Associated PIN		Associated PIN	

E.g. 1234-12345. Primary PIN: Parcel where Structure/SSIS are located. Associated PIN: Additional and/or adjacent property that you own or that is related to the project. County Land Explorer: <https://gis.stlouiscountymn.gov/landexplorer/> Property Lookup: <http://apps.stlouiscountymn.gov/auditor/parcelInfo20051frame/>

## APPLICANT

*Applicant Name	DANIEL PATNODE	I am a... <input type="checkbox"/> Contractor <input checked="" type="checkbox"/> Homeowner <input type="checkbox"/> Other	*Daytime #	763-670-3040	Date	10-8-23
*Applicant Address Where to send permit.	14 JASPER ST. SOUDAN MN.		*City	MN	*State	55782
Applicant Email	DCPATNODE@AOL.COM					
Contact Person If applicable.	DAN OR CINDY	Contact Person #	DAN - 763-670-3040			
Mailing Address If different than above.	22802 CO. RD 50	City	CORCORAN	State	MN.	ZIP 55340
Email Address Where to email permit. Providing an email address will expedite the time in which a permit is received by an applicant.						

## SITE INFORMATION

<input checked="" type="checkbox"/> Yes <input type="checkbox"/> No	*Is there a site address for this property? (If no, the application will be forwarded to 911/Communications to assign one.)
If yes above, please list site address: 14 JASPER STREET, SOUDAN, MN. 55782	
<input type="checkbox"/> Yes <input checked="" type="checkbox"/> No	*Is this leased property? If yes, leased from: <input type="checkbox"/> MN Power <input type="checkbox"/> MN DNR <input type="checkbox"/> US Forest Service <input type="checkbox"/> St. Louis County <input type="checkbox"/> Other
<input type="checkbox"/> Yes <input type="checkbox"/> No	*Do you have written authorization from the leased property owner? If yes, you must attach written authorization form.
*How is the property accessed? <input checked="" type="checkbox"/> Public Road <input type="checkbox"/> Private Road <input type="checkbox"/> Easement <input type="checkbox"/> Water <input type="checkbox"/> Other	

## PROJECT INFORMATION

<input checked="" type="checkbox"/> Yes <input type="checkbox"/> No	*Is this project on a parcel less than 2.5 acres?
<input type="checkbox"/> Yes <input checked="" type="checkbox"/> No	*Is this project within 300 feet of a stream/river or 1,000 feet of a lake?
<input type="checkbox"/> Yes <input checked="" type="checkbox"/> No	*Is this project adding a bedroom? Include home, garage, & accessory dwelling.
#	*Total # of bedrooms on property after project completion. Include home, garage, & accessory dwelling.
<input checked="" type="checkbox"/> Yes <input type="checkbox"/> No	*Does this project include plumbing or pressurized water in proposed structure? If yes, please explain:
<input checked="" type="checkbox"/> Yes <input type="checkbox"/> No	*Is the property connected to a municipal or sanitary district system? HOOKING UP TO CITY WATER

If you answered "Yes" to any of the project information questions above, it is required that you submit a copy of a septic permit to construct or certificate of compliance approval or municipal/sanitary district approval when applying for a land use permit.

## AGREEMENT

By submitting this application, I certify and agree that I am the owner or the authorized agent of the owner of the above property, and that all uses will conform to the provisions of St. Louis County. I further certify and agree that I will comply with all conditions imposed in connection with the approval of the application. Applicants may be required to submit additional property descriptions, property surveys, site plans, building plans and other information before the application is accepted or approved. Intentional or unintentional falsification of this application or any attachments thereto will make the application, any approval of the application and any resulting permit invalid. I authorize St. Louis County staff to inspect the property to review the application and for compliance inspections. Furthermore, by submitting this application, I release St. Louis County and its employees from any and all liability and claims for damages to person or property in any manner or form that may arise from the approval of the application or any related plans, the issuance of any resulting permit or the subsequent location, construction, alteration, repair, extension, operation or maintenance of the subject matter of the application.

\*Indicates required field. Incomplete applications will be returned.





# Land Use Permit WORKSHEET

St. Louis County, Minnesota

**About:** Land Use Permits are required for most building construction activities. They are also required for a variety of other uses. For more information, check out our website at: [www.stlouiscountymn.gov/land-use](http://www.stlouiscountymn.gov/land-use)

## WHAT ARE YOU APPLYING FOR Check all that apply to the project. PLEASE MAKE CHECKS TO: ST. LOUIS COUNTY AUDITOR

### #1 New Buildings Less than/equal to 1,200 square feet-\$165 Greater than 1,200 square feet-\$325

☐ Dwelling-Home, Mobile Home, Hunting Shack, or Cabin (Includes attached deck, if applicable.)

☐ Replacement of Existing Dwelling-Home, Mobile Home, Hunting Shack, or Cabin.  
Will the old dwelling be removed from the property? ☐ Yes ☐ No

*If yes, an affidavit must be filled out stating when the old dwelling will be removed.*

*If this dwelling is a mobile home, there is a special mobile home affidavit to be filled out.*

☐ Accessory Dwelling-Guest cottage or bunkhouse. Must follow administrative standards.

☒ Accessory Structure- Garage, Pole Building, shed, sauna, screenhouse or gazebo that either meets lake or river setback or not located in a shoreland area.

☐ Water-oriented Accessory Structure-Boathouse, Sauna, Screenhouse/gazebo on a lake or river located at reduced shoreline setback. Must follow administrative standards.

☐ Commercial Structure  
☐ Other Principal Structure

### #2 Other Construction/Change in Use-\$85

☐ Addition(s) to Dwelling  
Is the dwelling location on a lake or river? ☐ Yes ☐ No  
If Yes above, does the structure meet the required shoreline setback? ☐ Yes ☐ No If No, structure does not meet the shoreline setback, a performance standard permit or variance may be required. See box #4 or #7.

☐ Addition(s) to Accessory Structure  
☐ New Deck Only or Deck Replacement  
☐ Combination Addition(s) & Deck on the same structure  
☐ Moving a Structure  
☐ Sign  
☐ Structure Alteration or Component Replacement  
☐ Change in Use (i.e. converting an old cabin to storage)

What will the new use of the structure be?  
Explain the current and proposed use.  
Current: \_\_\_\_\_ Proposed: \_\_\_\_\_

#### Other-\$60

☐ Permit extension beyond 2 years

### #3 Subdivisions/Parcel Reviews Additional Worksheets Required

☐ Plat-Minor Subdivision-\$650  
☐ Conventional or Conservation Plat-Less than or equal to 3 lots-\$650  
☐ Conventional or Conservation Plat-Greater than 3 lots-\$1,300  
☐ Lot Line Adjustment-\$85  
☐ Parcel Review-\$85  
☐ Performance Standard Subdivision-\$385

### #4 Performance Standard-\$385 Additional Worksheets Required

☐ Borrow/Gravel Pit  
☐ Home Business  
☐ Land Alteration  
☐ Nonconforming Structure Replacement  
☐ Addition to a structure that does not meet shoreline setback  
☐ Other

### #5 Site Evaluation Site Visit/Evaluation-\$165

### #6 Wetland Reviews Additional Worksheets Required

☐ No Loss/Exemption/Replacement Plan-\$165  
☐ Wetland Delineation Review-\$385  
☐ Wetland Banking Plan Review-\$1,140

### #7 Public Hearings Additional Worksheets Required

☐ Administrative Appeal-\$1,275  
☐ Environmental Assessment-\$1,140  
☐ Conditional Use Permit-\$650  
☐ Conditional Use Permit Rehearing-\$210  
☐ Interim Use Permit-\$650  
☐ Interim Use Permit Rehearing-\$210  
☐ General Purpose Borrow Pit-\$650  
☐ Variance-\$650  
☐ Variance Rehearing-\$210  
☐ Multiple Hearing (Variance/conditional use)-\$980  
☐ Rezoning-\$650

## TYPE OF PROPOSED STRUCTURES

Check all that apply to the project.

<input checked="" type="checkbox"/> New Structure(s)	*Structure Type (Same as box #1 or 2 above)	*Foundation Type (Basement, Slab, Pier, etc)	*Maximum Length (Exterior Footprint Only)	*Maximum Width (Exterior Footprint Only)	*Maximum Sq. ft (Exterior footprint Only)	*Maximum Height (Ground Level to Roof Peak)
	Pole	ICF	50 Feet	36 Feet	1800 Sq. ft.	21 Feet
			Feet	Feet	Sq. ft.	Feet
			Feet	Feet	Sq. ft.	Feet
<input type="checkbox"/> Structure Additions	*Structure Type (Same as box #2 above)	*Foundation Type (Basement, Slab, Pier, etc)	*Maximum Length (Exterior Footprint Only)	*Maximum Width (Exterior Footprint Only)	*Maximum Sq. ft (Exterior footprint Only)	*Maximum Height (Ground Level to Roof Peak)
			Feet	Feet	Sq. ft.	Feet
			Feet	Feet	Sq. ft.	Feet
			Feet	Feet	Sq. ft.	Feet

\*Indicates required field. Incomplete applications will be returned.

**CONTACT:** Planning and Community Development Department

**Technical Assistance**  
Toll Free: 1-800-450-9777  
Land Use Information  
[www.stlouiscountymn.gov/landuse](http://www.stlouiscountymn.gov/landuse)

**Duluth-Planning & Community Development Department**  
Government Services Center  
320 West 2nd Street, Suite 301  
Duluth, MN 55802  
(218) 725-5000

**Virginia-Planning & Community Development Department**  
Government Services Center  
201 South 3rd Avenue West  
Virginia, MN 55792  
(218) 749-7103

#### Office Use Only

Receipt # \_\_\_\_\_  
Receipt Date \_\_\_\_\_  
Payment Amount \_\_\_\_\_  
Paid By \_\_\_\_\_  
Paid By \_\_\_\_\_



# Site Sketch Form

The sketch is to graphically illustrate your proposed project.

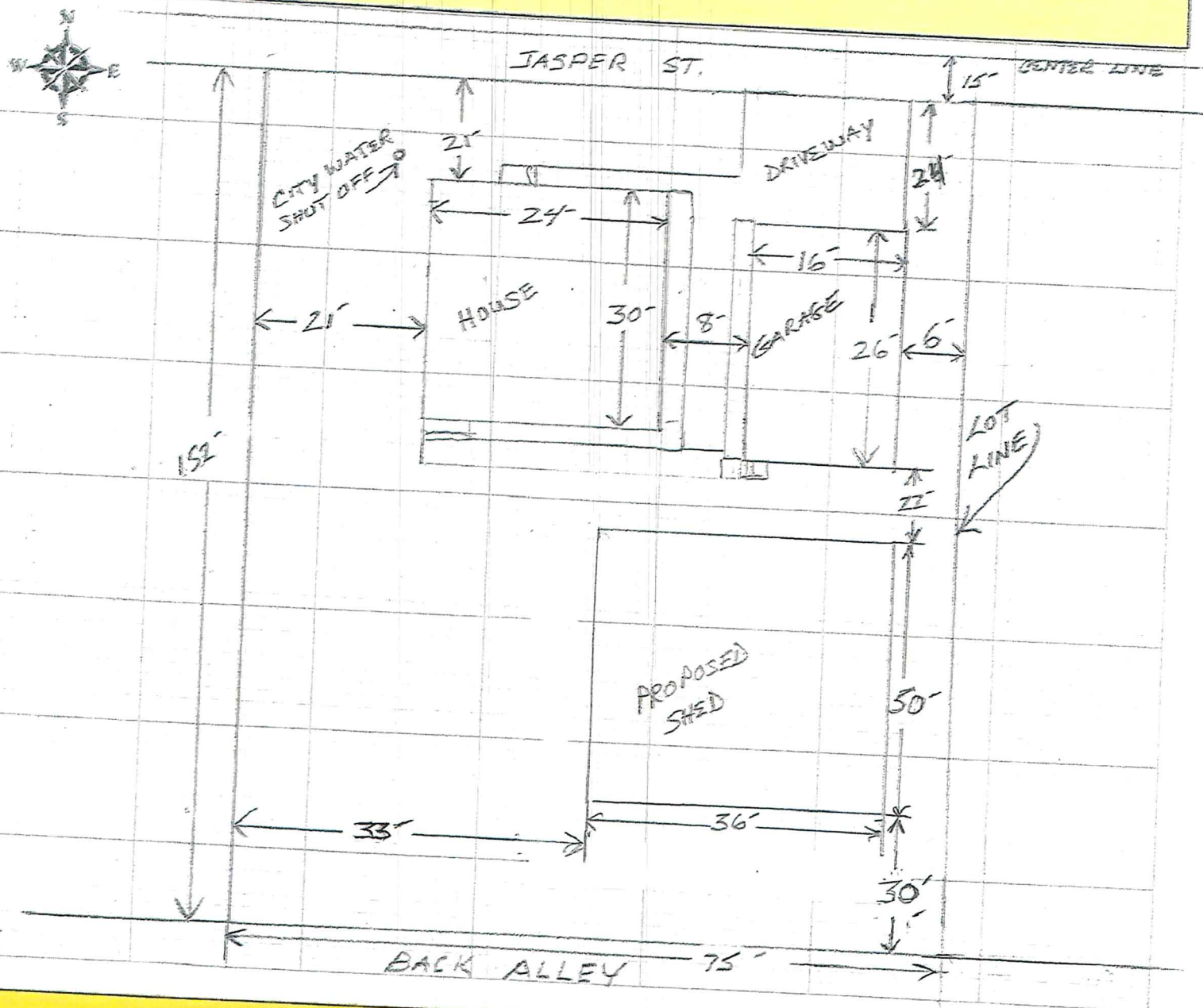
## Draw and Label on Sketch (in feet)

- ☒ \*All Structures on the Property and Dimensions
- ☒ \*All Driveways, Access Roads, and Wetlands
- ☒ \*All Proposed Structures and Dimensions

- ☐ \*Distance of Proposed Structures to Shoreline (Closest Point)
- ☐ \*Distance of Proposed Structures to Septic System and Tank
- ☒ \*Distance of Proposed Structures to Property Lines
- ☒ \*Distance of Proposed Structures to Road Centerline and Right-of Ways

You may submit your own site sketch **IF** it has the required information indicated above.

\*Applicant Name: **DANIEL PATNODE**  
 \*Site Address: **14 JASPER STREET Soudan, MN.**  
 \*PIN:



### \*\*\*Sanitary Authority Use Only\*\*\*

Sanitary Review: (To be determined by appropriate sanitary authority.)

Will the proposal, as shown above, negatively impact the SSTS/sanitary line or replacement area? ☐ Yes ☐ No

Sign off:

Signature \_\_\_\_\_

Title \_\_\_\_\_

Police Contract Costs

	Year 2022	Year 2023	Year 2024	Reason for change
Salary, Benefits, Expenses	\$ 130,104.41	\$ 134,904.41	\$ 141,547.41	Base rate increase \$1.50 x 2080 hours = \$3,120
Expenses inflation		\$ 3,411.86	\$ 2,118.00	Payroll burden of 31.44% over 2023 of 26.85% = 4.59% times (annual pay \$31.50 x 2080) = \$3007.37 Medical, dental, vision = \$1,446-\$1403 x 12 months = \$516 Expenses inflation ( \$134904.41+\$3,411.86 =\$138,316.27 less salary & benefits of \$95,959) = \$42,357 x 5% = \$2,1180
Part time coverage:				
Vacation increased one week				Years 2 thru 4 is 80 hours vs 40
Training one week				coverage while at training
State Aid received	\$ (18,902.07)	\$ (4,100.00)	\$ (10,889.42)	Actual state aid received
Sub Total	\$ 111,202.34	\$ 134,216.27	\$ 135,404.79	
Vehicle Reserve	\$ 5,000.00	\$ 5,000.00	\$ 5,000.00	
Sick/Vacation	\$ 6,500.00	\$ 6,841.25	\$ 7,169.62	
Total shared expenses	\$ 122,702.34	\$ 146,057.52	\$ 147,574.41	Base rate increase of \$1.50 on \$31.50 rate = 4.8% x \$6,841 = \$328.37
Total divided by 2	\$ 61,351.17	\$ 73,028.76	\$ 73,787.21	
Administrative costs	\$ 4,000.00	\$ 4,000.00	\$ 4,400.00	Slight increase in clerk and treasurer salaries and workload
Total Tower contract costs	\$ 65,351.17	\$ 77,028.76	\$ 78,187.21	

updatec for 2024

Wages	Time	2024 Pay Rate	Medicare @ 1.45%	PERA @ 18.7%	Unemployment @ .15%	Workers Comp @ 11.14%	Total Bill/Hr
Police Chief	Regular	\$ 31.50	\$ 0.46	\$ 5.89	\$ 0.05	\$ 3.51	\$ 41.40
	OT X1	\$ 47.25	\$ 0.69	\$ 8.84	\$ 0.07	\$ 5.26	\$ 62.11
	OT X2	\$ 63.00	\$ 0.91	\$ 11.78	\$ 0.09	\$ 7.02	\$ 82.81
	Regular	\$ 25.00	\$ 0.36	\$ 4.68	\$ 0.04	\$ 2.79	\$ 32.86
	OT 1.5	\$ 37.50	\$ 0.54	\$ 7.01	\$ 0.06	\$ 4.18	\$ 49.29
Pay after April 2024	OT X2	\$ 50.00	\$ 0.73	\$ 9.35	\$ 0.08	\$ 5.57	\$ 65.72

Total Workers Comp calc

31	0.1114055	
	\$31.50/100X9.97%+24%-8%-8%-11.14%	
	86119.488	Wages & benefits (\$41.40x2080)
	17352.00	Medic \$1,446X12
	103471.49	Total

Annual pay - chief



**TOWNSHIP OF BREITUNG  
RESOLUTION NO. 2023-23**

**STATE OF MINNESOTA  
COUNTY OF ST. LOUIS**

**RESOLUTION ACCEPTING DONATIONS**

**WHEREAS**, Breitung Township is authorized to accept and maintain donations of real and personal property pursuant to Minnesota Statutes Section 465.03 for the benefit of its citizens; and

**WHEREAS**, the following persons and entities have offered to contribute the donations set forth below to the township:

<b>Name of Donor</b>	<b>Donations</b>	<b>Date</b>
1. Reed & Jacki Lewis	\$200.00	10/02/2023
2. Sams Club	\$50.00	10/02/2023
3. Dan & Ivette Reing	\$59.56	10/02/2023
4. Tim & Lori Tomsich	\$50.00	10/07/2023
5. Frandsen Bank	\$100.00	10/07/2023
6. John Juhl	\$1000.00	10/07/2023
7. Charles & Nancy Tekautz	\$100.00	10/07/2023
8. Jorgine Gornick	\$50.00	10/07/2023
9. Susie Chiabotti	\$50.00	10/07/2023
10. Community Donations	\$760.00	10/07/2023

**WHEREAS**, the terms or conditions of the donations, if any, are as follows:

<b>Donation Number</b>	<b>Terms or Conditions</b>
1. Reed & Jacki Lewis	Police Department
2. Sams Club	Police Department
3. Dan & Ivette Reing	Police Department-Taco's with Cops Food
4. Tim & Lori Tomsich	Police Department
5. Frandsen Bank	Police Department
6. John Juhl	Police Department
7. Charles & Nancy Tekautz	Police Department
8. Jorgine Gornick	Police Department
9. Susie Chiabotti	Police Department
10. Community Donations	Police Department

**WHEREAS**, all such donations have been contributed to the township for the benefit of its citizens, as allowed by law; and

**WHEREAS**, The Township Board finds that it is appropriate to accept the donations offered.

**NOW, THEREFORE, BE IT RESOLVED BY THE TOWN BOARD OF BREITUNG TOWNSHIP, ST. LOUIS COUNTY, MINNESOTA, AS FOLLOWS:**

1. The donations described above are accepted and shall be used in accordance with noted terms or conditions either alone or in cooperation with others, as allowed by law.
2. The town clerk is hereby directed to acknowledge to each donor the town's acceptance of the donor's donation.

Adopted by the Town Board of Breitung Township on October 26<sup>th</sup>, 2023. Chairman Tim Tomsich, Supervisor Charles Tekautz, and Supervisor Matthew Tuchel

Ayes:  
Nays:

Approved: Chairperson

Attested: Clerk

\_\_\_\_\_  
Timothy Tomsich – Chairman

\_\_\_\_\_  
Dianna Sunsdahl - Clerk

DRAFT



TOWNSHIP OF BREITUNG  
RESOLUTION NO. 2023-25

STATE OF MINNESOTA  
COUNTY OF ST. LOUIS  
TOWNSHIP OF BREITUNG

RESOLUTION AUTHORIZING THE TOWNSHIP OF BREITUNG TO  
MAKE APPLICATION TO AND ACCEPT FUNDS FROM IRRRB FY24  
ENGINEERING FEES ON THE STUNTZ BAY ROAD PROJECT

WHEREAS THE authorizing authority approves of the attached application  
for the Engineering Fees – Stuntz Bay Road Project.

WHEREAS THE authorizing authority agrees to accept funding in the  
amount of \$51,000 for the engineering fees if approved by the IRRRB.

NOW BE IT RESOLVED that the authorizing authority of the Township of  
Breitung does adopt this resolution. Chairman Tomsich, Supervisor  
Tekautz and Supervisor Tuchel

Upon vote taken, the following voted:

For:

Against:

Whereupon said Resolution NO. 2023-25 was declared duly passed and  
adopted this 26<sup>th</sup> day of October 2023.

---

Timothy Tomsich – Chairman

---

Dianna Sundahl - Clerk