

Township of Breitung Agenda-Regular Board Meeting

Township of Breitung Regular Board Meeting 10/27/2022

Breitung Community Center 12:00pm

- Call the meeting to order/Roll Call
- Acceptance of Agenda
- Approval of Minutes
 - 10/13/22 Special Board Meeting
- Approval of September 2022 Treasurer's Report
 - Checks Written 46911-46997
 - Total Disbursements-\$139,119.48
 - Fund Balance-\$163,236.98
 - Voided Checks None
- Correspondence
 - Habitat for Humanity Highlights
 - St Louis County Housing Summit
 - IRRR-The Ranger 10/05 and 10/19 edition
 - IRRR-10/20 Update
 - USDA Housing Loans and Grants
 - Digital Estimating Team
 - Hey Gov
 - LMC-Rate Increase for Safety
- Public Input

Reports:

- Police-See Attached
- Fire-See Attached
- Road and Bridge-See Attached
- McKinley Park
- Recreation
- Wastewater Board
- Ambulance Commission

Acceptance of Reports

Old Business

- Infrastructure 2022-Open Bids
- ATV Trail and Options
- Infrastructure Project 2023-Update
 - Resolution 2022-30 Make Application and Accept CDBG Funds
 - Resolution 2022-31 Make Application and Accept IRRR Funds
- Stuntz Bay Road Project-Update
- Safety Grant Program offered by MNOSHA
- St Louis County Ordinance 62-Update to Short Term Rentals-Lodging Tax Meeting
- Hwy 169-Noise Reduction, Signage, Speed Limits Posted Updates

New Business

- Pay Bills as presented
- Fire Department
 - Training Officer Pay
 - FEMA Grant-MFSDA Safer Grant Reimbursement
- Police Department
 - Tacos with Cops Monies-Training and Equipment
 - Police Contract with the City of Tower 2023
- Post Office Mats
- Winter Help
- Request for No Parking on Main St. brought up by citizen, safety issue
- Mary Batinich-26 Center St-asking if campers can hook up to new sewer
- Resolution 2022-29-Resolution Accepting Donations

Next Regular Meeting Date-December 1st, 2022 at 12:00pm

Special Town Meeting-November 3rd, 2022 at 6:00pm

Adjourn

Township of Breitung Special Board Meeting 10-13-22 at 11:00am. In Person Meeting at the Breitung Community Center

Present In Person:

Board Members: Chairman Tim Tomsich, Supervisor Chuck Tekautz, Supervisor Greg Dostert
Clerk Dianna Sundahl

Absent: Treasurer Jorgine Gornick

Public: Daniel Reing-Police Chief, Jodi Summit-Timberjay, Jessica Hanine-Tower News (arrived at 11:05am)

Call to Order @ 11:00am by Chairman Tim Tomsich

Acceptance of Agenda

Motion by Supervisor Dostert to accept the agenda as presented

2nd by Supervisor Tekautz

Motion Passed 3-0

Approval of Minutes

Motion by Supervisor Tekautz to approve the minutes of the 09/22/22 Regular Board Meeting as presented

2nd by Supervisor Dostert

Motion passed 3-0

Correspondence-None

Public Input-None

Old Business:

McKinley Park Trail Bids

Motion by Supervisor Dostert to accept the lowest bid by Mesabi Bituminous and recommended by JPJ Engineering at \$361,540.00

Discussion on how this was going to be funded, Chairman Tomsich stated through DNR grant, IRRR grant, and McKinley park revenue

2nd by Supervisor Tekautz

Motion passed 3-0

ATV Trails

Discussion on the 3 options presented, Supervisor Dostert will talk to Lustek about setting up a meeting in regards their property. Clerk Sundahl to invite DNR to the end of the month Board Meeting to discuss further

St Louis County Ordinance 62-Update to Short Term Rentals

Supervisor Dostert mentioned that the Lodging Tax Board was meeting on October 24th, and members of the St. Louis County would be present. Supervisor Dostert to get more information to bring back to the Board for the end of the month meeting on October 27th. Comments and input should the Board wish to do so are due back to St. Louis County by Noon on November 7th, 2022.

MN OSHA Safety Grant and Security Doors

Clerk Sundahl mentioned that it wouldn't make much sense to spend the money on a camera for the Community Center at this time due to the fact that all the front windows were glass, but is interested in pursuing security glass at the front counter window in the future, possibly next year if grant monies are available. Clerk Sundahl requested the monies be spent for security at the Police Door Entrance per the quote. The Board requested Clerk Sundahl to work with LMC Safety Chair in regards to the grant, and find out if the Township can back out of it if the approximate \$4500 for AI System could not be found. Clerk Sundahl to research how difficult the grant application process is as well as work with IT to see if AI System could work with cameras already installed.

Blight

Chief Reing discussed the City of Chisholm and how they have Community Officers to enforce and give citations under their blight ordinance. Community Officers can give citations and if citations aren't paid they are escalated to the court system. Supervisor Tekautz volunteered to work with Chief Reing in regards to wording and language of the Township Blight Ordinance.

New Business

Town Meeting

Discussion by the Board in regards to holding a Town Meeting due to getting permission from the electors to update the Blight and Parking Ordinances as well as the recording of N 2nd St. Motion by Supervisor Tekautz to call for a Special Town Meeting of the electors to seek elector authority in regards to changes to the Blight and Parking Ordinance as well as the recording of N 2nd Ave as a township road. Clerk Sundahl is in agreement.

2nd by Supervisor Dostert

Motion passed 3-0

Turkey Giveaway-Timberjay-No action taken

Next Regular Board Meeting: Thursday, October 27th, 2022 at 12:00pm

Next Special Town Meeting: Thursday, November 3rd, 2022 at 6:00pm

Adjourn:

Motion by Supervisor Dostert to Adjourn the Meeting at 1:45am
2nd by Supervisor Tekautz
Motion Passed 3-0

Respectfully Submitted

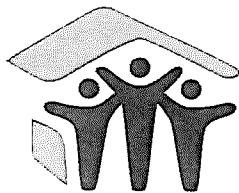
Dianna Sunsdahl
Clerk, Breitung Township

DRAFT

TOWNSHIP OF BREITUNG

Sep-22

GENERAL	(58,391.50)
ROAD & BRIDGE	48,190.89
FIRE	42,805.99
PARK	58,858.65
RECREATION	12,942.53
POLICE	49,454.23
PROJECTS	(27,653.56)
WATER DEPT	37,029.75
ARPA	0.00
TOTALS	163,236.98



North St. Louis County

Habitat
for Humanity®

Habitat HIGHLIGHTS

Fall 2022

Volume XXVIII, Edition II

THE NEED IS GREAT—TOGETHER, WE MAKE A DIFFERENCE!

MISSION VISION

**A world where
everyone has a decent
place to live.**

MISSION STATEMENT

**Seeking to put God's
love into action,
Habitat for Humanity
brings people together
to build homes,
communities,
and hope.**

Inside this issue:

2022 Build Season 2, 5
Progress

Board Leadership 3

In Memory:
Senator
Tomassoni

Habitat 101: From 4
Application to
Home Dedication

Legacy Giving 6

Dear Friend of Habitat,

The Minnesota Housing Partnership (MHP) profile reports that “access to safe, affordable homes builds a strong foundation for families and communities. But too many Minnesotans lack good housing options.”

The need for affordable housing in our Iron Range communities is greater now than it has ever been. As all of us are experiencing difficulties due to our current economy, and high prices at the pump and grocery store, it is not difficult to see the growing need of our low income neighbors, especially those who are struggling to make ends meet while living in unaffordable and substandard housing. Rents in our area are up by 25% while incomes have only risen by 8%. Statistics from MHP show that “22,089 households in St. Louis County pay more than 30% of their income towards housing costs, putting them at risk of being unable to afford basic needs like food and medicine. 9,355 are severely cost-burdened and pay more than 50% of their income on housing.” Lack of affordable housing units is also part of the problem as there are only 3,275 affordable units to the 7,295 extremely low income households in St. Louis County. When families can find a place to live, it is often not adequate for their needs, too expensive and also riddled with structural and health compromising issues.

Each year, I am saddened when I see an apartment building or rental unit burn down. As inadequate as some of these may be, it makes the burden greater as it adds to the unavailability of units in our community. North St. Louis County Habitat for Humanity is grateful for your partnership. Together we are making a difference in the safe, affordable and adequate homes available to our neighbors. We have worked with you over the last 27 years to provide homeownership solutions to 106 families in 15 communities across the Range. This year we are partnering with 5 more bringing the total to 111. That's 147 adults and 233 children in safe, energy efficient and sustainable homes!

Thank you for your partnership. Thanks to your generous support, both financially and in time and talent, we are well along the way on our five home construction projects in Buhl (2), Chisholm, Hibbing and Virginia. We are grateful for each individual donor and volunteer. So far this summer we have had energetic groups of Habitat International Care-a-Vanners, Voyagers Outward Bound, Blue Cross Blue Shield, Barr Engineering, the Carpenters Training Institute, TOGO Correctional Facility, Delta, Walmart, and Target. Students from Hibbing Community College, Hibbing High School and Minnesota North College's Engineering Class have also helped.

Our Vision statement at Habitat for Humanity is a world where everyone has a decent place to live. As I look around I can still see a great need for our mission. I can also see, as you can through the graphic below, that we are making a difference in adding to the affordable homes available to our neighbors in need. Together, we are making a difference.

Please contact us if you would like to volunteer. We have many opportunities this fall and winter as we work to finish up the five homes which we have begun this summer and fall. Thank you for your continued support!

Sincerely,

Nathan Thompson
Executive Director



Our Building History - Each house represents a Family served!

phone: (218) 749-8910
toll free: (866) 749-8910
email: habitat@nslchfh.org
website: www.nslchfh.org



clerk@breitungtownship.org

From: Iron Range Resources & Rehabilitation <IRRRB@public.govdelivery.com>
Sent: Thursday, October 13, 2022 3:09 PM
To: clerk@breitungtownship.org
Subject: Northern St. Louis County Housing Summit



DEPARTMENT OF IRON RANGE
RESOURCES & REHABILITATION

Northern St. Louis County Housing Summit

Please join us for a summit to explore the housing situation in northern St. Louis County and discuss solutions. This free event includes lunch. Registration is required.

Who should attend: City councilors, mayors, city clerks/staff, EDA/housing staff, and community and business leaders interested in housing needs for the region.

When: Tuesday, Nov. 1, 8:30 a.m. to 3:30 p.m.

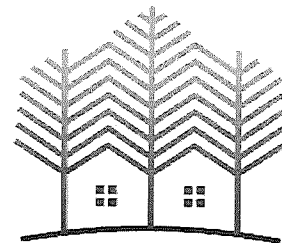
Where: Iron Trail Motors Event Center, 919 6th Street S., Virginia, Minnesota

[Register here.](#)

Registration Deadline: Tuesday, Oct. 25

For questions, contact Ida Rukavina at idarukavina@ramsmn.org or 218-748-7651.

The summit is sponsored by Iron Range Resources & Rehabilitation, Range Association of Municipalities and Schools (RAMS) and St. Louis County. Co-hosts are Hibbing Area Chamber of Commerce and Laurentian Chamber of Commerce.



NORTHERN MN
HOUSING SUMMIT

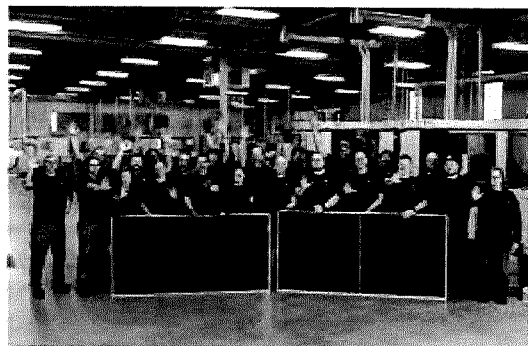
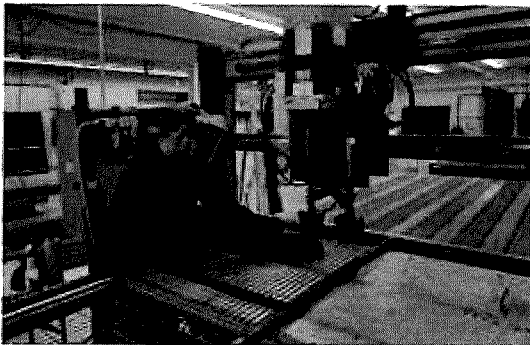
From: Iron Range Resources & Rehabilitation <IRRRB@public.govdelivery.com>
Sent: Wednesday, October 5, 2022 5:28 PM
To: clerk@breitungtownship.org
Subject: The Ranger - Oct. 5



The Ranger

Oct. 5, 2022

October is Manufacturing Month in Minnesota



October is Minnesota Manufacturing Month. The manufacturing industry is an integral part of the region's economy that accounts for direct and indirect jobs, career paths for students and workers, and often higher-than-average wages.

There are a large variety of manufacturers in the Iron Range Resources & Rehabilitation service area that have significant economic impacts to the region. They manufacture their products here in northeastern Minnesota and transport them to state, national and international markets. Below is a sampling of the region's manufacturers.

- [Advanced Machine Guarding Solutions](#) (Hibbing): safety steel wire mesh guarding for the automation industry.
- [ASV](#) (Grand Rapids): compact track loaders and skid steers.
- [Detroit Diesel Remanufacturing](#) (Hibbing): electric vehicle batteries, power inverters and HV products.
- [Floe International](#) (Hoyt Lakes): dock and boat lift systems, utility and recreational trailers, and FLOE CRAFT boats.
- [Heliene USA](#) (Mountain Iron): photovoltaic solar modules.
- [Range Tool](#) (Gilbert): CNC Precision contract machine products.
- [RazorEdge Systems](#) (Ely): industrial knife sharpening systems.

"Northeastern Minnesota has a strong economic core of manufacturing. A large array of products is manufactured in our region and exported throughout the state, nation and world. Heavy industrial equipment, piping, roofing, siding, solar panels, apparel, metals, woods, plastics, fishing lures, canoe stabilizers and docks are only a few of the products made by the people in northeastern Minnesota." – *Mark Phillips, Iron Range Resources & Rehabilitation commissioner.*

The manufacturing sector in Northeast Minnesota is home to over 8,400 jobs at 342 business establishments, operating in 17 different manufacturing subsectors. [Learn more on the Northeast Minnesota Manufacturing Blog](#) and [learn more about job opportunities in Minnesota's manufacturing industry.](#)

PHOTO COLLAGE: top row: Advanced Machine Guarding Solutions and ASV; bottom row: Detroit Diesel Remanufacturing and Heliene USA. Heliene celebrated its fifth anniversary in Mountain Iron, May 2022.

Build What Matters economic tour visits northeastern Minnesota

The Build What Matters economic tour kicked off yesterday. Minnesota Department of Employment and Economic Development (DEED) is leading state agency commissioners on a tour of northeastern Minnesota. The purpose of the tour is to showcase what makes the state one of the most welcoming and competitive in the country for attracting and growing businesses and to learn what the Walz-Flanagan Administration can do to make it even better.



The 2022 Build What Matters tour includes stops in eight Minnesota communities over three days, visiting companies, schools and public works projects to learn about success stories across the region. Commissioners are meeting with business and civic leaders to hear feedback on strategies to grow Minnesota's economy and create good-paying jobs. Gov. Tim Walz participated in today's leg of the tour with visits to Heliene USA in Mountain Iron and Keetac in Keewatin.

"It was great to be on the Range today to visit two successful companies that are positioning Minnesota as a leader in both the mining and solar industries," said Gov. Walz. "I am committed to working collaboratively with businesses and local leaders across Minnesota to keep our state's economy competitive, innovative and thriving."



Below is a list of stops on the tour.

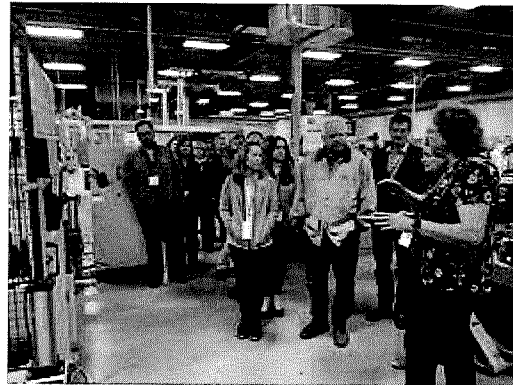
Tuesday, Oct. 4

- Sappi, Cloquet.
- Leadership Luncheon, Cloquet.
- Rock Ridge Public Schools, Eveleth.
- Bridge View Park, Virginia.
- Komatsu Manufacturing, Virginia.

- Dinner with Tribal Leaders, Tower.

Wednesday, Oct. 5

- Heliene USA, Mountain Iron.
- Keetac, Keewatin.
- Detroit Diesel Remanufacturing, Hibbing.
- Cirrus Aircraft, Duluth.
- Chester Park, Duluth.



Thursday, Oct. 6

- Launch MN Startup Event, Duluth.
- Port of Duluth.
- Build What Matters Tour Capstone Forum, Duluth.



The following commissioners are participating in the tour.

- DEED Commissioner **Steve Grove**.
- Department of Commerce Commissioner **Grace Arnold**.
- Department of Transportation Commissioner **Nancy Daubenberger**.

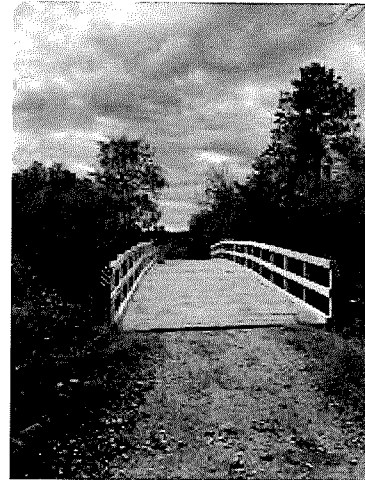
- Pollution Control Agency Commissioner **Katrina Kessler**.
- Office of Higher Education Commissioner **Dennis Olson**.
- Department of Agriculture Commissioner **Thom Petersen**.
- Department of Iron Range Resources & Rehabilitation Commissioner **Mark Phillips**.
- Department of Natural Resources Commissioner **Sarah Strommen**.

The tour, an annual DEED event to showcase interagency collaboration in support of businesses and hear feedback from Minnesotans around the state, returned for the first time since before the COVID-19 pandemic.

Snowmobile & ATV bridge rebuilt with trails task force grant

The Ranger ATV Snowmobile Club was awarded a \$10,000 grant from the Northern St. Louis County Trails Task Force to help rebuild the Partridge River bridge between Aurora and Hoyt Lakes. The bridge had been identified as a hazard due to worn decking from years of use by snowmobiles, ATVs and grooming equipment.

Over 30 club volunteers rebuilt the bridge decking with new wood on a Saturday in late September. The newly reconstructed bridge will accommodate the snowmobile, ATV and side-by-side UTV traffic during the upcoming peak fall and winter season.



The Ranger ATV Snowmobile Club is based in Hoyt Lakes and grooms the snowmobile and ATV trail from Pequaywan Trail on Highway 16 to Hoyt Lakes, Aurora, Biwabik, Giants Ridge and Gilbert.

The trails grant program was funded at \$100,000 by Iron Range Resources & Rehabilitation in fiscal year 2022 and is administered by Northern St. Louis County Trails Task Force and Iron Range Tourism Bureau (IRTB). The task force and IRTB utilize the

funding to award grants of \$10,000 or less to projects that foster the development and long-term sustainability of recreational trails and facilities in Northern St. Louis County.

Each grant requires a 1:1 match that could include cash, in-kind labor, donated materials, donated professional planning and environmental services, and donated land related to the project. Eligible grant applicants include cities, townships, counties, nonprofits and tribal units of government within St. Louis County and the Iron Range Resources & Rehabilitation service area.

For more information email Beth Pierce or call her at 218-749-8161.



Itasca Gun Club relocates to new site and continues its economic impact in the region

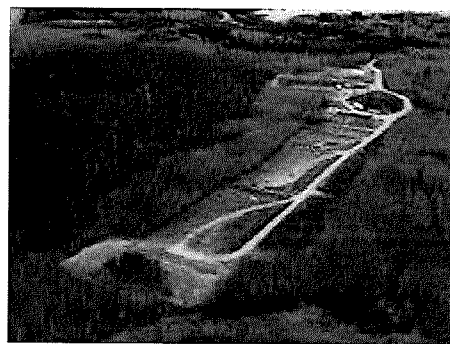


Itasca Gun Club (IGC) in Grand Rapids installed electric power at its 300-yard outdoor handicap-accessible shooting range and constructed berms for pistol and rifle shooting. The outdoor range was recently relocated from leased mine tailings land to a new 160-acre site due to mining operations. Iron Range Resources & Rehabilitation supported the electrification project with a \$7,500 Culture & Tourism grant. Total project investment was \$30,128.

IGC is a non-profit organization that was incorporated in 1964 and has over 1,000 family members from many counties across Minnesota and other states. Its first shooting range location was adjacent to Grand Rapids High School

until development of residential housing forced a relocation in 1984 to the mine tailings area. The club has been self-supporting for 57 years and operates on a debt-free budget through annual fundraising, membership dues and instructional class fees.

Shooting sports, education and training are offered by IGC. Each year over 300 youth and 250 adults are trained there in firearm safety. Other classes offered include conceal carry permit, metical cartridge reloading, range safety officer and NRA instructor training. The club offers specialty classes such as women only permit to carry, home firearm safety and basic pistol shooting. Many law enforcement agencies use the facility for shooting and training. Outdoor events include Itasca Action Pistol, hunter sight-in days, steel silhouette shooting, mini palma, service rifle shooting and special memorial World War II shoots.



An indoor range remains at the mine tailings site and is utilized by many organized groups including a youth rifle team, 4H youth air rifle and several pistol leagues. A "Pistols and Coffee" group meets twice per week there for shooting practice and socializing. Future plans at the new site entail a training/classroom facility, handicap-accessible indoor 50-

yard range, outdoor smallbore 100-yard range and outdoor 1,000-yard range. The new range is handicap accessible and will host hunt events for disabled vets.

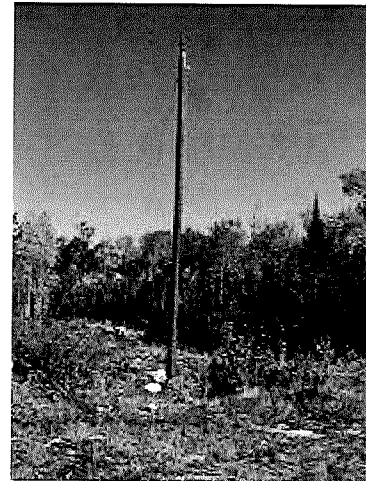


Once IGC vacates the leased mine tailing site, the classroom building will be moved to the new site and remaining structures will be demolished. The dirt from the face of the berms, which contained lead bullets has been buried at the new site in compliance with Minnesota Pollution Control Agency requirements.

"Our shooting facility and hunting in general have a positive economic connection to the local economy of Itasca County and the state of Minnesota," said Bob Ross, IGC treasurer. "Over 1,000 people use the range each fall for hunter sight-in days. They come from all over the state and neighboring states to hunt in Minnesota each year."

According to IGC Minnesota hunters and shooters spend more than \$400 million annually and support 14,398 jobs that pay more than \$300 million in wages and \$60 million in tax revenue. In addition, local contractors and businesses were used for the work on the outdoor range relocation and electrification project which had a direct and immediate impact to the local economy.

"We are very grateful to Iron Range Resources & Rehabilitation for their various grant programs which we have been able to qualify for over the past several years," said Ross. "Without the agency and their grants, we would not have been able to progress as far or as quickly on relocating and developing our range."



Email [Danae Beaudette](mailto:Danae.Beaudette@mn.gov) for Culture & Tourism grant information or call her at 218-735-3022.

The Ranger is a publication of Iron Range Resources & Rehabilitation. Our mission is to invest resources to foster vibrant growth and economic prosperity in northeastern Minnesota.

mn DEPARTMENT OF IRON RANGE
RESOURCES & REHABILITATION

[Manage Preferences](#) | [Unsubscribe](#) | [Help](#) | mn.gov/irrrb

From: Iron Range Resources & Rehabilitation <IRRRB@public.govdelivery.com>
Sent: Wednesday, October 19, 2022 4:11 PM
To: clerk@breitungtownship.org
Subject: The Ranger - Oct. 19



The Ranger

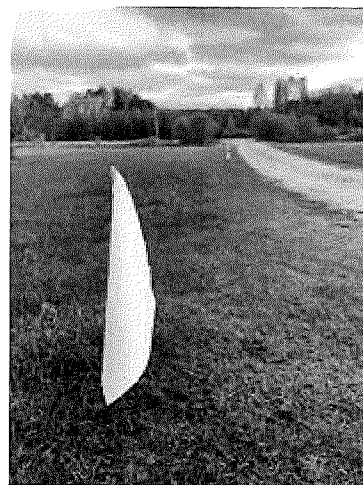
Oct. 19, 2022

Broadband expands in Morcom Township and Kabetogama area

Paul Bunyan Communications completed construction expanding one of the fastest rural all-fiber optic networks in the United States, the GigaZone™, to approximately 590 underserved homes, businesses and community institutions in the areas of Ash River, Black Duck Lake, Elephant Lake, Kabetogama and Morcom townships. These locations now have access to fiber optic fast broadband with speeds up to 10 Gbps, along with voice telephone services.

Iron Range Resources & Rehabilitation supported the projects with \$585,914 in Broadband Infrastructure grants to Paul Bunyan Communications. Total project investment was \$3,235,447.

The majority of the locations that received new service are in St. Louis County (SLC) and only had access to internet speeds below 10 Mbps. SLC is Minnesota's largest at over 6,200 square miles in size and has the highest number of unserved households in the state.





"This project helped to decrease the number of unserved locations in St. Louis County by nearly 600 and gave them access to the fastest internet speeds available, both upload and download speeds up to 10 Gig," said Steve Howard, Paul Bunyan Communications' IT & development manager. "This is a huge service improvement for everyone in the project area and is a game changer for the residents and businesses. In addition to the 590 locations passed, Paul Bunyan Communications was able to leverage the fiber installed for this project to provide services to mobile

phone towers. This expanded mobile phone coverage and greatly improved emergency communications throughout the area."

The GigaZone™ not only provides the capacity to handle current communication technologies quickly and efficiently, but it will also meet the increasing demands of the next generation of broadband innovations. For example, initially the network provided a maximum speed of 1 Gigabit per second, but the technology advanced by 2021 so the cooperative can now offer speeds up to 10 Gigabits per second.

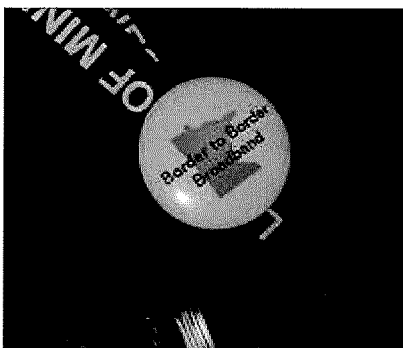
"We were one of the first rural areas of northern Minnesota, not directly connected to a city, to be awarded a rural broadband grant," said Sasha Lehto, Morcom Township clerk.

"The new high-speed broadband enables our residents to work where they play and allows our kids to do their homework from home. For me personally, as a county social worker and township clerk, I can better do what is required in my roles and better serve people. I give our late Senator David Tomassoni and Paul Bunyan

Communications a lot of credit for their assistance in making this possible."



Paul Bunyan Communications started as a telephone cooperative in 1952 and has grown into the largest broadband cooperative in Minnesota serving over 6,000 square miles throughout most of Beltrami County and portions of Cass, Hubbard, Itasca, Koochiching and St. Louis counties. In addition to fiber optic fast internet speeds up to 10 Gig powered by the GigaZone™, the cooperative offers television services, digital voice services, residential and business IT services and is also the home of northern Minnesota's certified Apple Service Centers in Bemidji and Grand Rapids.

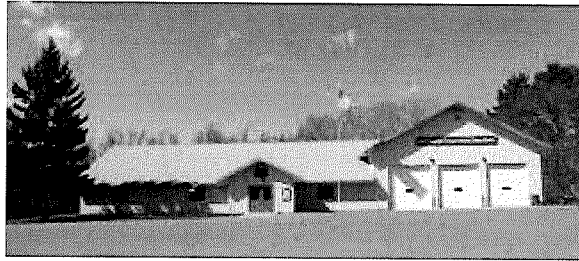


Other project partners included the State of Minnesota's Border to Border Broadband grant, Morcom Township and Paul Bunyan Communications.

Email Whitney Ridlon for Broadband Infrastructure grant information or call her at 218-735-3004.

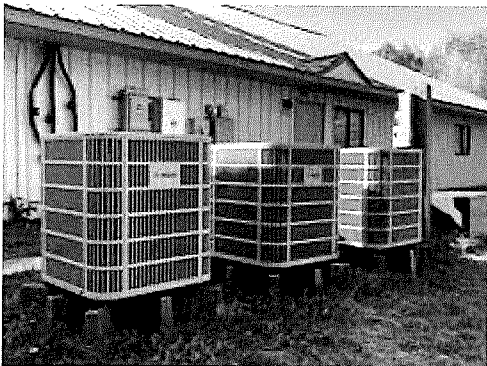
Goodland Township Community Center receives new HVAC system

Goodland Township installed a new high efficiency HVAC and filtration system in its community center, replacing the original outdated and aging system that dates back to 1990 and the building's original construction. Iron Range Resources & Rehabilitation supported the project with a \$20,000 Community Infrastructure grant. Total project investment was \$68,880.



The project involved the replacement of three forced air propane furnaces, three air conditioning units, exhaust fans and dropped ceiling. New equipment in its place included air source heat pumps, an ultraviolet purifier, ductwork and a new ceiling.

"After numerous repairs to the old system, our board determined that a high efficiency HVAC system with newer technology was needed," said Charles Miller, township chairperson. "We anticipate the new system will lower our energy use and costs, as well as eliminate the costly repairs to an aging system."



Goodland Township is located in southeast Itasca County and has twice the geographic area than most townships at 12 miles long and six miles wide. The community center is a focal point of the township and serves as a rental venue for private functions such as wedding and funeral receptions. It is utilized as a senior center, community gathering space and election polling site. Residents from Goodland, Warba, Sago and Floodwood Lake use the facility. Future plans

include preparing the center to serve as a regional disaster relief facility.

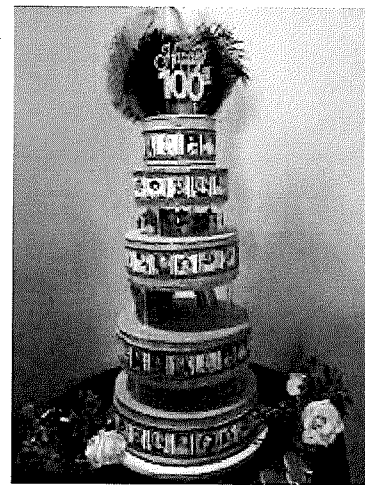
The Goodland Township fire hall is attached to the community center. The fire hall was expanded in 2019. The Goodland Volunteer Fire Department provides fire protection, first response medical and rescue operations to Goodland, Warba, Feely, Wawina, Cedar Valley Township and areas of Floodwood. The volunteer firefighters provide medical treatment for accidents that occur on highways and snowmobile and ATV trails. Iron Range Resources & Rehabilitation supported the 2019 expansion project with a \$150,000 Community Infrastructure grant.

Email [Chris Ismil](mailto:Chris.Ismil@ironrange.org) or call him at 218-735-3010 for more information about Community Infrastructure grants.

Judy Garland Museum celebrates legendary actress and singer's 100th birthday

The Judy Garland Museum in Grand Rapids hosted a four-day 100th birthday celebration this past summer to honor the famous 20th century performing artist who was born in Grand Rapids on June 10, 1922. Iron Range Resources & Rehabilitation supported the project with a \$5,000 Culture & Tourism grant that helped pay for event marketing including newspaper, radio, social media, banners, postcards, fliers and a live radio broadcast. Total project investment was \$10,000.

The museum was founded in 1975 and is part of Grand Rapids' tourism economy and culture. The museum is located in Garland's restored birthplace home and provides a gallery of educational exhibits showcasing her life and legacy. The 19th-century white-clapboard house and museum are located adjacent to the Children's Discovery Center Museum providing visitors access to a variety of hands-on, interactive exhibits, activities and indoor and outdoor play areas.



The four-day celebration attracted over 450 people and included movie showings, meet and greets, guided museum tours, Dash for the Ruby Slippers 5K run/walk, "Easter Parade" high tea party, a fundraising dinner, local food vendors, live music entertainment and an outdoor showing of "The Wizard of Oz" on a huge jumbo screen.

"What struck me most over the four-day celebration was how Judy's life and art still impacts people," said Janie Hietz, Judy Garland Museum's executive director. "During the event people came dressed as the movie's main character Dorothy and sang "Somewhere Over The Rainbow" on our outdoor stage. Judy passed away many years before some of the younger people were even born,

which is a testament to how her life's work is meaningful to people of all ages."

Garland was born Frances Ethel Gumm and had two older sisters. Her family ran a movie theater in Grand Rapids, and she performed song and dance with her sisters and mother. The Gumm family moved to California in 1926. She had a career in the film, theatre and music industry until she passed away in 1969 at age 47. According to Hietz, Garland publicly recalled that her fondest childhood memories were those made in Grand Rapids.



Other birthday celebration project partners included Grand Rapids Community Foundation, John Oliver Foundation and Lake Country Power. [Email Danae Beaudette](#) for Culture & Tourism grant information or call her at 218-735-3022.

The dual-museum site has approximately 500 members and is open to the public and area school field trips. [Learn more about the Judy Garland Museum and hours of operation.](#)

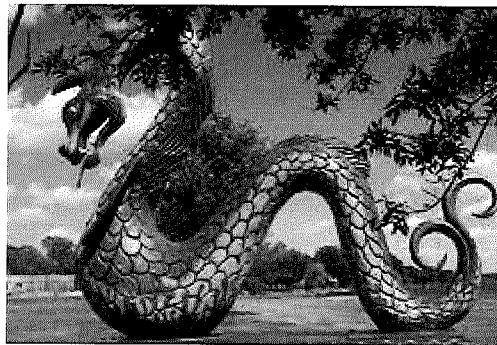
Crosby adds downtown music system



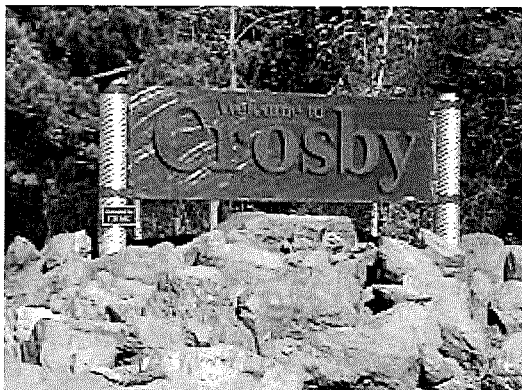
The city of Crosby installed an outdoor speaker system on light fixtures along main street to play holiday and special event music and broadcast emergency announcements. The sound project coincided with the reconstruction of Highway 210 and sidewalks through Crosby's business district. Iron Range Resources & Rehabilitation supported the project with a \$16,500 Downtown Streetscapes grant to Cuyuna Lakes Chamber of Commerce. Total project investment was \$33,000.

The chamber also partnered with the Cuyuna Range Garden Club to install large planters on each main street corner along Highway 210.

"The Music on Main sound system has greatly enhanced the experience of being in downtown Crosby, providing a great atmosphere for shoppers and information for our visitors through music and announcements," said Aubrey Koop, chamber director. "Our visitors for such events as Music in the Park, Heritage Days, Cuyuna Christmas and Cuyuna Crusher, along with our guests that visit to shop local in Cuyuna have all enjoyed this wonderful addition to Crosby."



Other project partners included Cuyuna Range Garden Club, Minnesota Department of Transportation and Stewart Sound Systems.

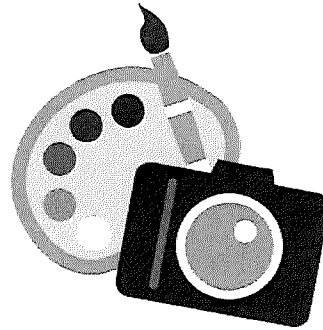


Beginning July 1, the Downtown Streetscapes grant merged with the Culture & Tourism grant and has a fiscal year budget of \$600,000. [Email Danae Beaudette](#) or call her at 218-735-3022 for Culture & Tourism grant information.

Iron Range Resources & Rehabilitation's grants are funded through taxes paid by Minnesota's mining industry.

Over \$289,000 in Culture & Tourism grants awarded across northeastern Minnesota

Arts, culture, history, tourism and recreational activities are essential to the quality of life and economy of our region. Fourteen projects were recently awarded Culture & Tourism grants.

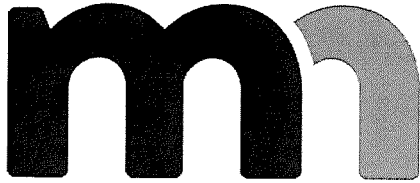


- **City of Hibbing: \$30,000** to construct six pickleball courts in Bennett Park.
- **Ely's Historic State Theatre: \$12,210** to market and advertise the End of the Road Film Festival.
- **Itasca Ski & Outing: \$30,000** to purchase a winch cat grooming machine for the ski jumping venue.
- **Township of Lutsen: \$14,770** to rehabilitate an unused community ballpark into a new community park with field refurbishment and the addition of picnic tables, gazebo, grills, historical marker, lighting, soccer nets and a dog park.
- **City of Gilbert: \$11,975** to replace the doors on the community arena and to construct and buy equipment for a disc golf course in Hopkins Park.
- **Grand Marais Art Colony: \$7,500** to design and install way finding signage and a lit enclosed informational kiosk.
- **Mesabi Community Orchestra: \$10,000** to market and advertise the Goodman Auditorium farewell concert at Virginia High School.
- **Judy Garland Children's Museum: \$30,000** to make improvements to the exterior and interior of Judy Garland's birthplace home including repairs and/or replacement to the storm windows, siding, roof and kitchen ceiling.
- **Friends of the Parks: \$24,999** to pave the parking lot at the newly developed community park that includes an area to honor the branches of the United States Military and veterans.
- **City of Tower: \$29,550** to replace the roof and make improvements to the historic ticket office at the Train Depot Museum.
- **Minnesota Clay Target Sports Education & Training Center: \$19,622** to replace the windows, doors and siding on the clubhouse exterior.
- **Town of Fayal: \$24,000** to construct a picnic shelter and skate shack at the playground, hockey rink and tennis court area.
- **Tower Soudan Historical Society: \$30,000** to install ADA restrooms and develop a new website for the historic fire hall.
- **Tourist Center Senior Citizens: \$15,000** to renovate the center's kitchen which is used for senior events, meetings, educational classes and community celebrations.

Does your community have a project that improves the region's arts, culture or recreation? [Email Danae Beaudette](#) for Culture & Tourism grant information or call her at 218-735-3022.

[Learn more about Culture & Tourism grants.](#)

Procurement fair highlights how to do business with government agencies



The Greater Minnesota Government Procurement Fair will be held on Tuesday, Oct. 25 at Grand Casino Mille Lacs in Onamia. This 18th annual event, which focuses on selling products and services to the government, runs from 9 a.m. to 3 p.m. Small businesses interested in doing business with government agencies and prime contractors

are encouraged to attend.

The fair will provide an opportunity for small businesses to learn about special programs designed to provide better access to the government marketplace. A trade show will be open throughout the day.

A variety of workshops, including Basics of Selling to the Government, HUBZone Certification and Cybersecurity, will be offered. There are eight workshops in two tracks from which to choose. There also will be an opportunity to visit with more than 20 representatives from state and federal government agencies, large businesses and resource providers. Iron Range Resources & Rehabilitation is an exhibitor at the event.

The procurement fair is free and open to all businesses, but registration is required.

[Register for the procurement fair.](#)

The Ranger is a publication of Iron Range Resources & Rehabilitation. Our mission is to invest resources to foster vibrant growth and economic prosperity in northeastern Minnesota.



**DEPARTMENT OF IRON RANGE
RESOURCES & REHABILITATION**

[Manage Preferences](#) | [Unsubscribe](#) | [Help](#) | mn.gov/irrrb

From: Iron Range Resources & Rehabilitation <IRRRB@public.govdelivery.com>
Sent: Thursday, October 20, 2022 2:32 PM
To: clerk@breitungtownship.org
Subject: IRRR Board Meeting Recap - Oct. 20



DEPARTMENT OF IRON RANGE RESOURCES & REHABILITATION

Oct. 20, 2022

FOR MORE INFORMATION:

Sheryl Kochevar, Communications Director

218-735-3021, Sheryl.Kochevar@state.mn.us

Businesses, communities, broadband and outdoor recreation in northeastern Minnesota receive over \$3 million in economic development funding

Approximately \$3.3 million in grants and loans was approved at today's Iron Range Resources & Rehabilitation Board meeting. Total combined project investment is approximately \$15 million. The projects are expected to increase the regional tax base, support business expansion, retain permanent and create construction jobs, improve broadband, provide essential services and expand outdoor recreation. The loans and grants combined are anticipated to impact 35 jobs and create 66 construction jobs.

Bank Participation Loan: \$1,300,000

Agency Investment \$1,300,000 | Total Investment \$2,600,000 | Leverage: 1 : 1

- **Cast 7, LLC, Hibbing: \$1,300,000** to purchase new equipment that will streamline, automate production, increase capacity and minimize product handling in the casting process. The increased production capacity will help Cast 7 meet existing and future demands in the global grate market.

Development Infrastructure Grants: \$395,825

Agency Investment \$395,825 | Total Investment \$3,078,230 | Leverage: 6.8 : 1

- **City of Ely: \$48,825** to construct water and sewer infrastructure and relocate utilities for Razor Edge Systems to expand its manufacturing into an adjacent property it recently purchased.
- **City of Grand Rapids: \$47,000** to update Itasca Family YMCA's fire suppression system and HVAC control system.
- **City of Hibbing: \$300,000** to construct water, sewer, gas and electrical infrastructure for Lees Industrial Building, which was recently relocated from Bennett Park area to Hibbing Industrial Park.

Broadband Infrastructure Grants: \$128,500

Agency Investment \$128,500 | Total Project Investment \$4,282,269 | Leverage: 32.3 : 1

- **City of Hibbing, Mediacom Communications: \$128,500** to expand Mediacom fiber optic to serve up to 573 unserved households in the Hibbing and adjacent areas.

Community Infrastructure Grants: \$1,333,863

Agency Investment \$1,333,863 | Total Project Investment \$4,635,069 | Leverage: 2.5 : 1

- **City of Babbitt: \$250,000** to extend infrastructure to Birch Lake Recreation Area campground and RV park. The original infrastructure installation encountered unforeseen geological conditions and requires more costly installation methods.
- **City of Bigfork: \$51,877** to upgrade a sewer line and repair a lift station to prevent disruption of essential services.
- **Bois Forte Band of Chippewa: \$350,000** to replace a failing concrete dam with a new rock arch dam on Nett River. The dam supports water level control in Nett Lake, which is the tribe's premier wild rice source.
- **Clinton Township: \$69,000** to upgrade the security, handicap accessibility and energy efficiency to the emergency services facility and community center.

- **Crane Lake Water & Sanitary District: \$250,000** to upgrade the wastewater treatment plant with a flow equalization step and other improvements.
- **Eveleth Virginia Airport Authority: \$60,361** to upgrade exterior lighting and improve accessibility and security at the airport terminal area including the terminal building, hangar and maintenance garage.
- **City of Hibbing: \$150,000** to line existing residential sewer lines to extend the life of infrastructure.
- **City of Virginia: \$65,125** to reconstruct Progress Park Drive and repair damage caused by heavy equipment traffic during the construction of the new Rock Ridge Academy School. The improvement will assist traffic flow for the school and two nearby existing businesses.
- **City of Virginia: \$87,500** to improve the computer systems that operate and monitor 17 sanitary sewer lift stations throughout the city and allow for greater efficiency, reporting ability, monitoring capability and reduced operation costs.

Regional Trails Grant: \$176,900

Agency Investment \$176,900 | Total Project Investment \$401,425 | Leverage: 1.3 : 1

- **City of Bovey: \$50,000** to construct one new multi-use trail connection along Highway 169 which will be used by snowmobilers and to reconstruct one existing trail connecting Bovey with Mesabi Trail and Coleraine. The reconstructed trail will be used for walking and biking.
- **City of Hoyt Lakes: \$50,000** to purchase trail maintenance equipment for Ranger Snowmobile & ATV Club volunteers to maintain trails across the Aurora, Biwabik and Hoyt Lakes area.
- **Itasca County: \$55,500** to construct phase II of a snowmobile and ATV trail segment connecting the city of Nashwauk to Alborn-Pengilly trail.
- **Northern Lights Nordic Ski Club: \$21,400** to purchase trail maintenance equipment for Ski Club volunteers to maintain and groom cross country ski trails in Itasca County.

Iron Range Resources & Rehabilitation is funded through taxes paid by Minnesota's mining industry. The projects approved at today's board meeting tie into the agency's strategies of leveraging capital, improving the quality of life and retaining and creating well-paying jobs.

USDA Accepting Applications to Help Low-Income Individuals and Families Buy or Repair Homes

USDA Rural Development is accepting applications for very low- and low-income individuals and families seeking to purchase or repair a home in a rural area.

The Direct Home Loan program offers financing to qualified very-low and low-income applicants that are unable to qualify for traditional financing. No down payment is required, and the interest rate could be as low as one percent with a subsidy. Applicants must meet income and credit guidelines and demonstrate repayment ability. The program is available in rural communities of generally 35,000 people or less.

The maximum loan amount is \$40,000 at a one percent interest rate, repayable for a 20-year term and can be used to improve or modernize homes and do essential repairs. Grants of up to \$10,000 are available to homeowners 62 and older and must be used to remove health or safety hazards, such as fixing a leaking roof, installing indoor plumbing, or replacing a furnace.

Contact a USDA Rural Development Housing Specialist in your area today, to see if you qualify.

USDA Rural Development loans and grants provide assistance that supports infrastructure improvements; business development; housing; community services such as schools, public safety and health care; and high-speed internet access in rural areas. For more information, visit www.rd.usda.gov/mn.

#

USDA is an equal opportunity provider, employer, and lender.

Single Family Housing Repair Loans and Grants

What does this program do?

Also known as the Section 504 Home Repair program, it provides loans to very-low-income homeowners to repair, improve, or modernize their homes, or provides grants to elderly, very-low-income homeowners to remove health and safety hazards.

Who can apply for this program?

To qualify, you must:

- **Be the homeowner and occupy the house**
- **Be unable to obtain affordable credit elsewhere**
- **Have a family income within the very-low-income limit**
- **For grants, be age 62 or older and not be able to repay a repair loan**

What is an eligible area?

Properties must be located in an eligible rural area. You can visit the USDA Income and Property Eligibility website (available at this link: <https://go.usa.gov/xzcdM>) for complete details.

How can funds be used?

- Loans can be used to repair, improve, or modernize homes, or to remove health and safety hazards.
- Grants must be used to remove health and safety hazards.

How much money can I get?

- Maximum loan is \$40,000.
- Maximum grant is \$10,000.
- Loans and grants can be combined for up to \$50,000 in assistance.

What are the terms of the loan or grant?

- Loans are repaid over 20 years.
- Loan interest rate is fixed at 1 percent.
- Full title service is required for loans greater than \$25,000.
- Grants have a lifetime limit of \$10,000.
- Grants must be repaid if the property is sold in less than three years.

- If applicants can repay part - but not all - of the costs, they may be offered a loan and grant combination.

Is there a deadline to apply?

Applications are available year-round as long as funding is available, and are processed in the order they are received.

How long does an application take?

Approval times depend on funding availability in your area. Talk to a state or area office-based USDA home loan specialist (a map is available at this link: <https://www.rd.usda.gov/browse-state>) for help with your application.

How do I get started?

Contact a USDA home loan specialist (information is available at this link: <https://www.rd.usda.gov/browse-state>) in your area.

What governs this program?

- The Housing Act of 1949 as amended; 7 CFR, Part 3550 (available at this link: <https://go.usa.gov/xzcvG>)
- HB-1-3550 - Direct Single Family Housing Program Field Office Handbook (available at this link: <https://go.usa.gov/xzcvM> - PDF)

NOTE: Because citations and other information is subject to change, always consult the program instructions listed in the section above titled *"What Governs This Program?"* You can also contact your local office for assistance (a list is available at this link: <https://go.usa.gov/xzjP7>). You will find additional forms, resources, and program information at rd.usda.gov. *USDA is an equal opportunity provider, employer, and lender.*

Last Updated March 2022

Rural Home Loans (Direct Program)

What does this program do?

Also known as the Section 502 Direct Loan Program, this program helps low- and very-low-income applicants buy decent, safe, and sanitary housing in eligible rural areas by providing payment assistance to increase their applicant's repayment ability. Payment assistance is a type of subsidy that reduces the mortgage payment for a short time. The amount of assistance is determined by the adjusted family income.

Who can apply for this program?

A number of factors are considered when determining eligibility for Single Family Direct Home Loans. At a minimum, applicants must have an adjusted income that is at or below the applicable low-income limit for the area in which they wish to buy a house (an income limit map is available at this link: <https://go.usa.gov/xzcfb>). They must also demonstrate a willingness and ability to repay debt.

Applicants must:

- Be without decent, safe, and sanitary housing
- Be unable to obtain a loan from other resources on terms and conditions that can reasonably be expected to be met
- Agree to occupy the property as their principal residence
- Have the legal capacity to incur a loan obligation
- Meet citizenship or eligible noncitizen requirements
- Not be suspended or debarred from participation in federal programs

Properties financed with direct loan funds must:

- Be modest in size for the area
- Not have market value in excess of the applicable area loan limit
- Not be designed for income-producing activities

Borrowers are required to repay all or a portion of the payment subsidy received over the life of the loan when the title to the property transfers, or the borrower is no longer living in the dwelling.

Applicants must meet income eligibility for a direct loan. You can visit the USDA Income and Property Eligibility website (available at this link: <https://go.usa.gov/xzcdM>) for complete details. Or, contact your local Rural Development office (a map is available at this link: <https://www.rd.usda.gov/browse-state>) to learn more.

What is an eligible area?

Properties must be located in an eligible rural area. Visit the USDA Income and Property Eligibility website (available at this link: <https://go.usa.gov/xzcdM>) for details.

How can funds be used?

Loan funds can be used to help low-income people or households buy homes in rural areas. Funds can be used to build, repair, renovate, or relocate a home, or to purchase and prepare sites, including providing water and waste treatment equipment.

How much can I borrow?

The maximum loan amount an applicant qualifies for depends on their ability to repay a loan. Rural Development considers various factors, such as income, debts, assets, and the amount of payment assistance the applicant is eligible to receive. Regardless of repayment ability, applicants can never borrow more than the area loan limit (plus certain other costs eligible to be financed) in the county in which the property is located (information is available at this link: <https://go.usa.gov/xzcGB> - PDF)

What is the interest rate and payback period?

- The interest rate is fixed, and based on current market rates at loan approval or closing, whichever is lower.
- When modified by payment assistance, the monthly mortgage payment can be reduced to a low as an effective 1 percent interest rate.
- The payback period is 33 years (38 years for very-low-income applicants who can't afford a 33-year loan term).

How much down payment is required?

Down payments are not typically required, but applicants with assets higher than the asset limit can be required to use a portion of those assets.

Is there a deadline to apply?

Applications are accepted year-round through your local Rural Development office. A map is available at this link: <https://www.rd.usda.gov/browse-state>.

How long does an application take?

Processing times vary depending on funding availability and program demand in the area in which the applicant is interested in buying. Processing times also are dependent upon the completeness of the applicant's package.

What governs this program?

- The Housing Act of 1949 as amended; 7 CFR, Part 3550 (available at this link: <https://go.usa.gov/xzcvG>)
- HB-1-3550 - Direct Single Family Housing Program Field Office Handbook (available at this link: <https://go.usa.gov/xzcvM> - PDF)

NOTE: Because citations and other information are subject to change, always consult the program instructions listed in the section above titled "*What Governs This Program?*" You can also contact your local office for assistance (a list is available at this link: <https://go.usa.gov/xzjP7>). You will find additional forms, resources, and program information at rd.usda.gov. *USDA is an equal opportunity provider, employer, and lender.*

From: Dustin Overbeck <dustin.overbeck@heygov.co>
Sent: Monday, October 24, 2022 5:20 PM
To: clerk@breitungtownship.org
Subject: The Digital Future of Local Government is Made in Door County

Hi Dianna,

I mailed you a letter about the digital future of local government. During the month of August, HeyGov and our sister company, Town Web, were at the WMCA conference in Wisconsin Dells. We met with other municipal clerks to show the benefits of digital government.

We've built **software that makes municipal services available online!**

This means:

1. **Payment by credit card, is possible! At your office or online, for whatever permits and licenses the have.**
2. **Filling out forms and applications online, by residents and local businesses.**

This means, HeyGov can help you reclaim time during the day. When you'd have to call up residents to fill out the correct details or to bring cash to pay the balance, because the total was incorrectly added.

You probably know about **Chris Astrella**. He's been a municipal clerk in Wisconsin for 16 year and is Past President of the WMCA. So he's very familiar with municipal Clerk life. Last year, Chris left working for one local government and relocated to Las Vegas. To stay connected to the work of Clerks, Chris now works for HeyGov - basically, he works for all local governments now! He's helping my team and I shape the future of local government.

Can we send more information about HeyGov?

Best regards,
Dustin Overbeck
HeyGov & Town Web
[HeyGov.com](https://heygov.com) | [TownWeb.com](https://townweb.com)



From: Digital Estimating Team <Dsmith@digitalestimating.services>
Sent: Tuesday, October 11, 2022 10:27 AM
To: clerk@breitungtownship.org
Subject: 2022 Breitung Infrastructure Improvements

Good Morning,

I came to know that you're bidding the Breitung Infrastructure project, just reaching out if you need any help in estimating this job?

In case you already have in-house estimators, you can get our estimate to compare your numbers to be more competitive.

Bid date is 10-27-2022. May I send you our charges for preparing detailed estimate for this project?

Feel free to call our office manager, Kyle at 979-320-0789 for more information regarding this job.

Thanks,

David Smith

Marketing Coordinator | DigitalEstimating.com
2203 Tierwester St. Houston, TX 77004



"Every job is worth it, bid it to win it."

Note: If you don't want to receive any emails from us in future, please reply us with "Unsubscribe" in subject line.



October 2022

Dear Regional Safety Group member,

Greetings from the League of Minnesota Cities Insurance Trust Regional Safety Group Program Coordinator Ashley Edwardson. I am writing to let you know that the Board has approved a contract renewal with the Minnesota Municipal Utilities Association (MMUA) for Regional Safety Group (RSG) trainers. Under the terms of the contract, the cost of MMUA training meetings will increase from \$1,325 per meeting to \$1,650 per meeting. LMCIT will continue to pay 55% of the cost leaving each group to pay the remaining 45%, \$742.50. The RSGs have not had a member facing fee increase since 2017.

MMUA is currently the only statewide provider of safety training that meets the tailored needs of our individual cities. Based on the summary of our 2022 RSG Survey, we saw that RSG members are satisfied with their MMUA trainers and the meetings they conduct. These findings led the Board to approve the price increase, which will fund MMUA's increased costs for fuel, employee benefits, and training.

The program's cost increase went into effect Oct. 1, 2022. Members will be billed for 2022 in January 2023 and will see a slight increase applied to their invoice for the final three months of 2022. The new rate will then apply to the entire year of 2023, which will be invoiced in January 2024.

The Board believes these cost increases contribute to maintaining the RSG program's reputation of being a personalized, top-tier, and still affordable, training program. Please feel free to reach out to me if you have any questions about the decision to renew our contract with MMUA.

Sincerely,

Ashley Edwardson
651-281-1268
Aedwardson@lmc.org

Ashley Edwardson



BREITUNG POLICE DEPARTMENT

SERVING BREITUNG TOWNSHIP, THE TOWN OF SOUDAN, AND THE CITY OF TOWER

PHONE: (218) 753-6660

FAX: (218) 753-2407

41 1ST AVE • P.O. BOX 6

SOUDAN MN 55782

DANIEL REING

CHIEF OF POLICE

September 2022 Monthly Report

96 calls for service/ICRS

5 Citations

1 citation for Driving After Revocation

1 citation for Misdemeanor DWI

2 citations for Speed

1 juvenile citation for a traffic related offense

4 Investigations

2 Felony level theft and criminal damage incidents

1 assisting the Sheriff's Office with a burglary

1 investigation to locate a suspect on a traffic offense

1 arrest for DWI



facebook.com/breitungpolicedept



@breitungpolice



BREITUNG POLICE DEPARTMENT

SERVING BREITUNG TOWNSHIP, THE TOWN OF SOUDAN, AND THE CITY OF TOWER

PHONE: (218) 753-6660

41 1ST AVE • P.O. BOX 6

DANIEL REING

FAX: (218) 753-2407

SOUDAN MN 55782

CHIEF OF POLICE

I cannot believe how September went so fast. The kids are already back in school. It was a busy month with a steady number of calls. There was a large amount of traffic in the area. Many of our summer residents were winterizing their cabins and making their way south. Make sure to lock and secure your property for the winter. Amongst the busy month we also spent time planning for the meet and greet Tacos with Cops that was to occur on October 8th. Our officers also completed our yearly firearms training requirements.

I am also working with the township staff on completing updates to our parking and blight ordinances. September had nice weather and resulted in quite a bit of activity in our area. The snow is coming soon, complete your outdoor to do list before the weather turns for good. There is always work to be done and projects to complete. Deer season is coming soon please be safe.

Daniel Reing
Chief of Police
Breitung Police Department



facebook.com/breitungpolicedept



@breitungpolice

Breitung Fire & Rescue
Box 337
33 1st Ave.
Soudan, Mn. 55782

September Fire Dept Report

Regular monthly and annual fire dept meeting was held on 9/14/22.

This month's training consisted of Vehicle Apparatus Pump Operations using different techniques on how to use nozzle streams for fire suppression. We also conducted our mandated quarterly SCBA checks.

We had a great turn out for the Big Truck Night which was held in Soudan. We had all our trucks at the park and we assisted with cooking food for the community.

We had a total of four calls for service. We assisted the Greenwood Fire Department with a structure fire call, an assist for the Tower Ambulance in Breitung Township in which we utilized our fire boat, we were called to put out a small abandoned campfire on the bike trail area on Junction Road, and we participated in Big Truck Night at the Soudan Park.

Road and Bridge Report

September 2022 Report

Hosted "Big Truck Night" which was a huge success

Bituminous patch done

Continue shutting off water for numerous season residents

Closed and Winterized McKinley Park Campground

"Welcome to Soudan" entrance sign completed

Flushed hydrants and winterized

Cleaning and Maintenance of culverts

Worked with Amptek to complete lighting project at the rink

Completed repair of hockey boards for this year

Have mowed for the last time this year

Tom Gorsma

Maintenance Supervisor

From: Dekkers, Brad (DNR) <brad.dekkers@state.mn.us>
Sent: Wednesday, October 5, 2022 11:28 AM
To: clerk@breitungtownship.org
Cc: Majerus, Joseph (DNR)
Subject: ATV trail connection, Thompson Farm Rd NE to State Park (south side of Hwy 169)
Attachments: TrailConnection_BreitungTownship.pdf

Dianna,

I am following up on the conversation you and I just had on the phone and on the discussion the township had with Chris Suihkonen a couple town meetings ago. Please put on your agenda for your next town board meeting – Thursday 27 October @ noon, I believe – to discuss and potentially decide on the direction the township wants to go regarding connecting ATVs from the trail being built in the State Park south of Hwy 169 to the Thompson Farm Rd and ultimately the communities of Tower and Soudan. DNR Trails would be willing to open and maintain the Taconite State Trail from Thompson Farm Rd west to Jct Rd and possibly further, but we need the township to make the decision on how to make that trail connection between the Taconite and the State Park. Attached is map showing the three options Chris talked about with you at your meeting. It sounds like you would prefer option 1, and that would be DNR Trails' preference as well.

DNR Trails would be able to help build this trail connection on the ground as the adjoining trail is built, but we need you as a local partner to grant permission for the township land and to have a conversation with the private landowner (i.e. Mr. Kultala) to get permission for crossing the corner of his land with ATVs. Verbal permission from Mr. Kultala followed by an email from the Township to DNR confirming that permission would suffice (see the attached map for the location of the trail crossing his land).

I am guessing the board will want to discuss this more before making a decision. Joe Majerus or I will plan on going to your November board meeting if you want to set aside your October meeting for discussion. If it would help to have one of us at the October meeting, please let me know.

Thanks for your time. Give me a call if you have any questions.

Brad

BRAD DEKKERS | ASSISTANT AREA SUPERVISOR
PARKS AND TRAILS
DEPARTMENT OF NATURAL RESOURCES
Phone #: 218.300.7843 Brad.Dekkers@state.mn.us

 **DEPARTMENT OF
NATURAL RESOURCES**



Options 2 and 3 would both stay on MnDOT Right-of-Way and Township property. These options would require more signage and effort to keep ATVs from using Jasper St as main travel route.

30ft x 30ft square needed to cross private land

Would require landowner permission from Wayne Kuitala or Forest Concrete. Best Option for keeping riders from using Jasper St as main travel route.

#1

#2

#3

Tie Trail into Taconite State Trail to south and continue west to Tower and Soudan

TOWN OF BREITUNGS

PLAN

TOWNSHIP OF BREITUNG
RESOLUTION NO. 2022-30

STATE OF MINNESOTA
COUNTY OF ST. LOUIS
TOWNSHIP OF BREITUNG

RESOLUTION AUTHORIZING THE TOWSHIP OF BREITUNG TO
MAKE APPLICATION TO AND ACCEPT FUNDS FROM CDBG
COMMUNITY INFRASTRUCTURE FUND PROGRAM

WHEREAS THE authorizing authority approves of the attached application
FOR THE Township of Breitung Infrastructure Improvements project FY
2023; and

WHEREAS THE authorizing authority agrees to accept funding for the
underlying project if approved by the CDBG.

NOW BE IT RESOLVED that the authorizing authority of the Township of
Breitung does adopt this resolution.

Upon vote taken, the following voted:

For:

Against:

Whereupon said Resolution NO. 2022-30 was declared duly passed and
adopted this 27th day of October 2022.

Timothy Tomsich – Chairman

Dianna Sundahl – Clerk

TOWNSHIP OF BREITUNG
RESOLUTION NO. 2022-31

STATE OF MINNESOTA
COUNTY OF ST. LOUIS
TOWNSHIP OF BREITUNG

RESOLUTION AUTHORIZING THE TOWNSHIP OF BREITUNG TO
MAKE APPLICATION TO AND ACCEPT FUND FROM IRRR FY23
COMMUNITY INFRASTRUCTURE PROGRAM

WHEREAS THE authorizing authority approves of the attached application for the Township of Breitung Infrastructure Improvements project FY 2023; and

WHEREAS THE authorizing authority agrees to accept funding for the underlying project if approved by the IRRR.

NOW BE IT RESOLVED that the authorizing authority of the Township of Breitung does adopt this resolution.

Upon vote taken, the following voted:

For:

Against:

Whereupon said Resolution NO. 2022-31 was declared duly passed and adopted this 27th day of October, 2022.

Timothy Tomsich – Chairman

Dianna Sundahl - Clerk

Custom Theaters Inc.

301 W Sheridan St
Ely, MN 55731

Estimate

Date	Estimate #
9/21/2022	4387

Name / Address
Breitung Police Department

Ship To

Account #	Project

Item	Description	Qty	Cost	Total
INSTACC #...	WIRE AND INSTALL AN AIPHONE IXG SERIES SYSTEM TO INCLUDE: 1 DOOR MONITOR WITH 2 WAY COMMUNICATIONS (LOCATED LEFT OF ENTRANCE) 1 DESKTOP VIEWING SCREEN/COMMUNICATOR (LOCATED ON DESK) 1 DOOR CONTROL RELAY 1 ACCESS CONTROL STRIKE 1 SOFTWARE LICENSE 1 NETWORK CONFIGURATION 1 POWER SUPPLY PRICE INCLUDES ALL NECESSARY WIRES AND HARDWARE	1	8,455.00	8,455.00

Thank you for your business.	Subtotal	\$8,455.00
	Sales Tax (7.375%)	\$0.00
	Total	\$8,455.00

Signature _____



Saint Louis County

Planning and Community Development Department
www.stlouiscountymn.gov

Matthew E. Johnson
Director

TO: St. Louis County Cities, Organized Towns and Interested Parties

FROM: Matthew Johnson, Director
St. Louis County Planning & Community Development Department

DATE: September 30, 2022

RE: Planning Commission Public Hearing Thursday, November 10, 2022, for
St. Louis County Zoning Ordinance 62 proposed amendments-Short Term Rental
permitting standards

NOTICE IS HEREBY GIVEN THAT THE ST. LOUIS COUNTY PLANNING COMMISSION WILL HOLD A PUBLIC HEARING ON **THURSDAY, NOVEMBER 10, 2022**, AT THE GOVERNMENT SERVICES CENTER, 201 SOUTH 3RD AVENUE WEST, VIRGINIA, MN, REGARDING THE FOLLOWING:

The Planning Commission will consider comments on proposed amendments to St. Louis County Zoning Ordinance 62. St. Louis County is working to bring properties into compliance with short term rental permitting standards adopted by the St. Louis County Board on February 25, 2020.

Public input received during development of the adopted St. Louis County Comprehensive Land Use Plan in 2019 was strongly in support of looking at ways to improve the regulation of short term rentals. On August 15, 2019, the St. Louis County Planning Commission initiated proposed Short Term Rental, Zoning Ordinance 62 amendments and distributed for public input. On October 10, 2019, the Planning Commission, after soliciting comments for 30 days, held a public hearing regarding the proposed Short Term Rental, Zoning Ordinance 62 amendments, reviewed draft proposed Ordinance 62 amendments to regulate short term rentals and provided an additional 30 days for public comment. On December 12, 2019 the Planning Commission held a second public hearing and voted to recommend that the St. Louis County Board adopt the proposed Ordinance 62 amendments to regulate short term rentals. The County Board held a public hearing on February 25, 2020, after which the amendments became effective in Ordinance 62.

Since the 2020 adoption of ordinance amendments, staff has been working with property owners who were operating short term rentals to obtain proper permits. Two standards of the ordinance have been challenging to meet, general liability insurance requirements and Minnesota Department of

☐ **Duluth Office**
Government Services Center
320 W 2nd St, Ste 301
Duluth, MN 55802
Phone: (218) 725-5000
Toll Free in MN: 1-800-450-9777
Fax: (218) 725-5029

☒ **Virginia Office**
Government Service Center
201 South 3rd Avenue West
Virginia, MN 55792
Phone: (218) 749-7103
Toll Free in MN: 1-800-450-9777
Fax: (218) 749-7194

Health licensure requirements. The St. Louis County Planning Commission held a workshop on September 15, 2022, to discuss the details of the ordinance language and has periodically discussed revisions during their monthly business meetings. The Planning Commission has reviewed proposed amendments that would better streamline the permitting process, while still keeping the intent of the standards as originally proposed.

Please find enclosed proposed red line amendments, current standards, and fact sheet.

For additional information on St. Louis County's Zoning Ordinance and short term rental permitting standards and applications requirements, please visit:

<https://www.stlouiscountymn.gov/str>

Your input is important to us. It is not necessary that you comment; however, if you wish to, you can do so by attending the hearing, sending a letter, or e-mailing Jenny Bourbonais, Land Use Manager, at bourbonaisj@stlouiscountymn.gov prior to the hearing. All letters must be signed and received in our office by noon on November 7, 2022. All correspondence will be presented to the Planning Commission as part of the hearing. Please email Jenny Bourbonais or call at 218-749-0629 if you have any questions.

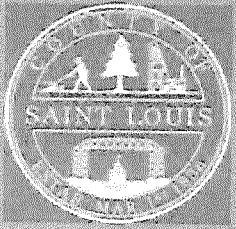
Please confirm receipt of this email by October 17, 2022.

If you wish to be provided a hard copy of this notice, additional information or draft ordinance amendments, please contact our office.

****In compliance with the Americans with Disabilities Act, those requiring accommodation for this meeting should notify the Planning Department 72 hours prior to the meeting at (218) 749-7103****

☐ **Duluth Office**
Government Services Center
320 W 2nd St, Ste 301
Duluth, MN 55802
Phone: (218) 725-5000
Toll Free in MN: 1-800-450-9777
Fax: (218) 725-5029

☒ **Virginia Office**
Government Service Center
201 South 3rd Avenue West
Virginia, MN 55792
Phone: (218) 749-7103
Toll Free in MN: 1-800-450-9777
Fax: (218) 749-7194



Short Term Rental

Shoreland and Nonshoreland

St. Louis County Planning and Community Development

Short term rental is defined as any home, cabin, condominium, or similar building represented to the public as a place where sleeping accommodations are furnished to the public on a nightly or weekly and less than thirty day basis for compensation.



Short term rentals located within city limits or townships that administer their own zoning are not regulated by this ordinance amendment. You are advised to contact your local zoning administrator for information relating to short term rental.

Short Term Rental Standards

Short term rentals may be allowed with a performance standard permit in the following zone districts (FAM, SMU, RES*, MU, LSO, LCO). The following Standards are required as part of the Performance Standard Permit:

Required Standards:

1. Rental dwelling unit must be located on a conforming lot or an existing lot of record.
2. No more than one rental dwelling unit per parcel may be rented. Additional occupancy, other than by the owners of the property, by use of recreational vehicles, tents, accessory structures, garages, boathouse, pole barn, shed, fish houses or similar structure is not allowed. Accessory dwellings shall not be rented as per Zoning Ordinance 62, Article VI, Section 6.11 (i.e. accessory dwellings cannot be rented unless a permit for short term rental is applied for and on file as part of the overall property for rent).
3. More than one rental dwelling unit on the same parcel or single units on contiguous parcels under common ownership shall require a conditional use permit where the use is conditionally permitted.
4. Sewage treatment must comply with St. Louis County Subsurface Sewage Treatment System Ordinance.
5. Disposal of solid waste must comply with St. Louis County Solid Waste Ordinance.
6. The site shall provide on-site parking sufficient to accommodate the occupants of the rental dwelling unit. No motor vehicle shall be located within the limits of any road or road right-of-way.
7. The permittee/owner/operator shall provide a visual demarcation of the property lines.
8. All local, state and federal requirements shall be followed for taxing, licensing, permitting and other applicable requirements.
9. If a property is used primarily for rental purposes, then it shall be deemed a Commercial Use-Class II and subject to ordinance requirements regarding commercial use.
10. A permit for a short term rental use shall not be transferrable upon new ownership of a property where a permit was issued.
11. Any violation of this ordinance shall deem a short term rental permit null and void.

***Short Term Rental within Residential Zone Districts**

In a RES zone district, private residential use should be considered preeminent over non-residential uses. Therefore, in a RES zone district, the following additional standards shall be met:

1. Rental dwelling unit must be located on a parcel that meets the minimum zoning requirements.
2. There shall be a minimum buffer of at least 300 feet (as measured from property lines) between each short term rental use.
3. All property lines shall be located by a licensed land survey, unless there is written agreement filed with the Department between the adjoining property owners and the short term rental permittee/owner/operator.
4. Adequate vegetative screening shall be required to screen the use from any shoreline and adjacent property owners. If vegetative screening is not sufficient, the Director may require solid fencing that reduces the visual impact of a use upon adjacent structures or residential uses.

Short Term Rental Documents

The following documents are required as part of the Performance Standard Permit Submittal:

Required Documents:

1. The permittee/owner/operator shall obtain and maintain an applicable Minnesota Department of Health Lodging License and provide a copy prior to issuance of permit.
2. The permittee/owner/operator shall obtain and provide a copy of a Minnesota tax identification number and other applicable identification numbers and provide a copy prior to issuance of permit.
3. The permittee/owner/operator shall provide the St. Louis County Planning and Community Development Director with current contact information for person(s) responsible for property management.
4. The rental unit shall post the rules and regulations and emergency contact information for police, fire, hospital, septic tank pumper, and permittee/owner/operator.
5. General Liability insurance covering the property, including its use as a short term rental, shall be maintained in an amount consistent with St. Louis County Board coverage requirements; a copy of the insurance policy shall be provided to and on file with the County.

General Liability Insurance.

- A. \$500,000 for claims for wrongful death and each claimant for other claims;
\$1,500,000 per occurrence.
No Less Than \$2,000,000 Aggregate coverage.
 - B. Policy shall include at least premises, operations, completed operations, independent contractors and subcontractors and contractual liability and environmental liability.
 - C. St. Louis County must be named additional insured.
6. Aquatic Invasive Species (AIS) prevention guidelines must be posted for watercraft use.

St Louis County Planning and Community Development

DULUTH OFFICE

Government Services Center
320 West 2nd Street, Suite 301
Duluth, MN 55802
Phone: (218) 725-5000
Fax: (218) 725-5029
Toll Free MN: 1-800-450-9777

VIRGINIA OFFICE

Government Services Center
201 South 3rd Avenue West
Virginia, MN 55792
Phone: (218) 749-7103
Fax: (218) 749-7194
Toll Free MN: 1-800-450-9777

From: Lawien, Christian (DOT) <Christian.Lawien@state.mn.us>
Sent: Wednesday, October 26, 2022 2:20 PM
To: supervisor2@breitungtownship.org
Subject: MnDOT Vehicle Noise and Your Speed Sign Information
Attachments: Vehicle Noise Laws Enforced MnDOT application.docx; Vehicle Speed Feedback Signs_Buyer and Installation Guide.pdf; Vehicle Speed Feedback Sign Permit Form - Revised 5-27-2022.doc; Sign Requirements.pdf

Hi Greg,

It was nice talking with you on the phone today. As promised, I am providing information regarding requirements, processes, and costs for signing for vehicle noise and speed.

Vehicle Noise:

I reviewed the corridor and there is room for a sign in each direction (west end of town for eastbound traffic and east end of town for westbound traffic); however, if Jake Braking noise is the main concern, I would only install one for westbound traffic on the east end of town prior to the first speed limit 50 sign. Traffic needs to slow down from 60 to 50 followed by a downhill in this direction. The eastbound direction there is no speed reduction and there is no downhill section so there shouldn't be any desire for trucks to jake brake. Given this information, the Town would need to apply for a sign and provide payment by check of \$1,508.00. Once we received the application and check, we would put in a work order for our sign crew to go install the sign. Any future maintenance due to sign age (over 15 years old) or damage would be the responsibility of the Town. I have attached the application the City would need to fill out and mail to MnDOT.



The sign will look like this:

Your Speed Sign:

I have attached the requirements for these signs and a permit application. The sign would need to be installed in accordance with MnDOT requirements (attached) including crashworthiness of the sign structure. The location would need to go on the first speed limit as you enter town. These signs can be effective when entering a developed area; however, on this segment of highway, I do not believe they will be worth the cost. As soon as drivers pass the sign and see that there is no developed area indicating the need to slow down, they will likely resume higher speeds. I certainly understand the desire to slow vehicle speeds through town, unfortunately, there isn't enough development in the stretch of highway to indicate to most motorists the need to drive slower even when the speed limit sign says 50 as you can attest to currently.

I hope this provides enough information for the Town Board Meeting. Let me know if you have any questions or if the Town would like to move ahead with any of these possibilities.

Best Regards,
Christian

Christian Lawien, PE

3/18/2021

Vehicle Speed Feedback Signs: Buyer and Installation Guide

Vehicle Speed Feedback signs provide drivers with real-time speed information. Previously, these signs were referred to as Dynamic Speed Display signs.

This document, along with input from your District Traffic Engineer, provides guidance for selecting an appropriate location and purchasing a Vehicle Speed Feedback sign. All products listed on the Minnesota Department of Transportation (MnDOT) Approved Products List (APL) for Vehicle Speed Feedback signs meet MnDOT's criteria. However, many of these products have options, add-ons, etc. that may not meet MnDOT's criteria and are not appropriate for use on MnDOT roadways.

If you manufacture Vehicle Speed Feedback signs and would like to be on the MnDOT Approved Products List (APL), please see the Product Requirement document.

Please note: This document covers Vehicle Speed Feedback signs that supplement a SPEED LIMIT (R2-1) sign or a School Speed Limit sign, and, will be installed through the MnDOT permit process. For more information on other installations of Vehicle Speed Feedback signs, such as installation as part of temporary traffic control or for advisory speeds, please review the Traffic Engineering Manual and the Minnesota IWZ Toolbox. For additional questions, please contact your District Traffic Engineer or the MnDOT Office of Traffic Engineering.

Process

Permanent Vehicle Speed Feedback signs may be installed on a MnDOT roadway through the MnDOT permit process. All costs related to purchasing, installing and (if needed) relocating the Vehicle Speed Feedback sign shall be paid by the requesting agency. In some cases, installing a Vehicle Speed Feedback sign on a MnDOT roadway may not be possible. **Prior to purchasing or relocating a Vehicle Speed Feedback sign, please discuss the location, sign color, sign size, etc. with your District Traffic Engineer.** The District Traffic Engineer will provide further information on proceeding with the permit process.

Only Vehicle Speed Feedback signs listed on MnDOT's APL are eligible for installation on MnDOT roadways. **Do not purchase a Vehicle Speed Feedback sign that is not on MnDOT's APL for Vehicle Speed Feedback signs.**

Installation Location

A Vehicle Speed Feedback sign instantly provides a driver with their vehicle's speed. To receive the greatest impact from Vehicle Speed Feedback signs and to avoid overuse, the sign should only be installed at key locations. Key locations typically include speed zone changes, the start of a school speed zone, or within a construction/work zone. Only one Vehicle Speed Feedback sign is typically installed per direction of travel per speed zone. The installation and location of a Vehicle Speed Feedback sign must meet the following criteria:

- The Vehicle Speed Feedback sign shall be mounted above, below or beside a regulatory SPEED LIMIT (R2-1) sign.
 - If mounted side-by-side, the signs shall be mounted at the same height and on separate structures.
 - The mounting height shall comply with the [MN MUTCD](#) and [Standard Plan 5-297.701](#), Standard Sign Placement – Type C & E.
- The Vehicle Speed Feedback sign shall be installed on a crashworthy structure that meets MASH-16, TL-3 criteria.

If the intended location is to supplement a School Speed Limit sign, please order a Vehicle Speed Feedback sign marked as “may be used with School Speed Limits” on MnDOT’s APL. Please see the [Special Situations: School Speed Zones](#) for more information on the programming requirements.

For help determining the appropriate location, please work with your [District Traffic Engineer](#).

Sign Color

A Vehicle Speed Feedback sign is a warning sign. According to the MN MUTCD and MnDOT standards for warning signs, the static YOUR SPEED section of a Vehicle Speed Feedback sign may come in the following color combinations:

- **Black on Fluorescent Orange**, used in work zones or temporary traffic control areas.
- **Black on Fluorescent Yellow-Green**, used when the sign is providing vehicle speed feedback on a school speed limit in a school speed zone. (NOTE: If the intended location is to supplement a School Speed Limit sign, please order a Vehicle Speed Feedback sign marked as “may be used with School Speed Limits” on MnDOT’s APL. Please see the [Special Situations: School Speed Zones](#) for more information on the programming inputs.)
- **Black on Fluorescent Yellow**, is the most commonly used color combination and is used in situations not covered by the previous bullets.

For help choosing the correct sign color, please contact your [District Traffic Engineer](#).

Sign Size

MnDOT’s APL classifies Vehicle Speed Feedback signs into two size categories: Standard and Oversized. An Oversized Vehicle Speed Feedback sign may always be used in place of the Standard size.

The **Standard** size should be used on single-lane roadways.

The **Oversized** size is the larger of the two classifications and should be used on multilane roadways.

For assistance with determining the sign size, please contact your [District Traffic Engineer](#).

Programming Inputs

When supplementing a Speed Limit sign (which is the most common application), the Vehicle Speed Feedback sign shall operate 24 hours a day, 7 days a week. For School Speed Zones, please see the Special Situations: School Speed Zones section.

Prior to having a Vehicle Speed Feedback sign shipped, consider asking the manufacturer or vendor to program the sign.

Set the speed limit and threshold/maximum speed following the directions found in the Owner's/User's Manual. Typically, the threshold/maximum speed is set at 10 mph over the posted speed limit for roadways with speed limits under 45 mph, and 20 mph over the posted speed limit for roadways with speed limits of 45 mph or greater. The device shall be programmed to operate as follows:

- When no speed is detected, the dynamic display shall be blank (or black).
- When a speed equal to or less than the speed limit is detected, the dynamic display shall display the speed.
- When a speed greater than the speed limit and less than the threshold/maximum speed is detected, the dynamic display shall display the speed and the speed shall flash at a rate of 50 to 60 cycles per minute.
- When a speed equal to or greater than the threshold/maximum speed is detected, the dynamic display shall be blank (or black).

Based on the roadway characteristics, your District Traffic Engineer may suggest threshold/maximum speeds different than those listed above. Please work with your District Traffic Engineer to determine the most appropriate threshold/maximum speeds to use for the intended location.

Strobes or Flashing Lights are not allowed. Some of the products on MnDOT's APL for Vehicle Speed Feedback signs include features such as strobes or flashing lights. These options shall be disabled. The Owner's/User's Manual provides directions on disabling these features.

Smiley faces, "thank you" messages, or other graphics/messages are not allowed. Some of the products on MnDOT's APL for Vehicle Speed Feedback signs include features such as smiley faces, "thank you" messages, or other graphics/messages. These options shall be disabled. The Owner's/User's Manual provides directions on disabling these features.

Special Situations: School Speed Zones

According to Minnesota Statutes, Section 169.14, Subd. 5a, Speed Zoning in School Zone, a school speed limit is only "in effect when children are present, going to or leaving school during opening or closing hours or during school recess periods." Any Vehicle Speed Feedback signs installed for a school speed limit shall only operate when a school speed limit is in effect. Devices marked on MnDOT's APL with "may be used with School Speed Limits" allow the product to be programmed to turn on or off during certain times of the day, days of the week, and months of the year.

Ongoing Operational Requirements

The Vehicle Speed Feedback sign shall remain in good repair and operate correctly (within allowable tolerances), or, be removed. MnDOT, at its discretion, may remove inoperable Vehicle Speed Feedback signs.

Dynamic Components:

The Dynamic Components are considered acceptable if the following thresholds are met or exceeded.

- The LED display is properly aligned for the intended driver's line of vision.
- Displayed numbers are legible and at least 90% of the pixels are operating correctly.
- The programming for the device follows criteria discussed in the [Programming Inputs](#) section of this document. Use of strobes, flashing lights, smiley faces, "thank you" messages or other graphics are not allowed.

Static Sign:

The Static Sign is considered acceptable, if the following thresholds are met or exceeded:

- The "YOUR SPEED" message is legible both day and night.
- None of the letters or parts of the letters are missing.
- The retroreflectivity of the sign meets minimum standards, see Table 2A-3 Minimum Maintained Retroreflectivity Levels in the Minnesota Manual on Uniform Traffic Control ([MN MUTCD](#)).

Other Things to Consider

This section is provided as a courtesy, it does not include any product requirements. Potential buyers of a Vehicle Speed Feedback sign may want to consider:

- Power needs of the product. If a manufacturer or vendor provides a site evaluation to determine the appropriate power needed for continuous operation (24 hours a day, 7 days a week).
- Product warranty.
- Expected life of the product.
- Routine maintenance requirements of the product.
- Data collection abilities of the product (such as vehicle speeds, vehicle speed by time of day, traffic volumes, etc.).

Contacts

For assistance with determining the location, sign color, size, etc., please contact your [District Traffic Engineer](#).

For questions about the APL application and approval process for Vehicle Speed Feedback signs, please contact:

Tiffany Kautz
Traffic Standards Engineer
Office of Traffic Engineering
tiffany.kautz@state.mn.us
651-234-7388

REQUESTER PAY SIGNING APPLICATION
For Standard Traffic Signs/Traffic Control Devices
MINNESOTA DEPARTMENT OF TRANSPORTATION (MnDOT)



(PLEASE PRINT)

Applicant's Name _____	
Address _____	
Phone _____	Email Address _____

Justification for additional standard traffic signs/traffic control devices: _____

Location(s) of additional standard traffic signs/traffic control devices: _____

Number of additional standard signs/traffic control devices requested: _____ (all the signs must contain the same legend)

Direction of travel to be signed: Eastbound Westbound Northbound Southbound

Sign Legend	Sign Size	Quantity	Cost per Sign	SUBTOTAL
Vehicle Noise Laws Enforced	36"x42"		\$1,508.00	

TOTAL COST _____

(NOTE: Total Cost reflects the number of signs, type of signs, fabrication, installation, and all related costs.)

Please include your payment for the Total Cost with this application. Make your check or money order payable to: **COMMISSIONER OF TRANSPORTATION**

Please read, complete, and sign the *Certification of Compliance* before mailing it.

Return to: **Minnesota Department of Transportation**
1123 Mesaba Ave
Duluth, MN 55811
Attn: Christian Lawien

Questions:
(218) 576-8155
christian.lawien@state.mn.us

MnDOT Use Only				
<input type="checkbox"/> Payment Received Dated _____ Authorized _____				
Minnesota Department of Transportation				
WO No. _____	Area _____	T.H. _____	R.P. _____	C.S. _____

Standard Traffic Signs/Traffic Control Devices
CERTIFICATION OF COMPLIANCE
MINNESOTA DEPARTMENT OF TRANSPORTATION (MnDOT)



Purchase, Installation, and Maintenance of Signs

I, the undersigned, do hereby certify that this facility conforms to all applicable laws and regulations concerning the provisions for public accommodations without regard to race, color, creed, religion, national origin, sex, disability, age and sexual orientation.

I agree to accept the sign's format, design, structure, and location(s), as determined by MnDOT, in compliance with all pertinent state signing standards, and to make payment in advance for the fabrication, installation and all related costs of the sign(s) by MnDOT.

I do also agree to pay any costs incurred with relocating the sign(s) in the future, if necessary to comply with legally-required spacing distances.

I do also agree to pay for any additional maintenance and/or replacement costs for the signs(s) resulting from damage, vandalism, or other such occurrences beyond the control of MnDOT.

I agree to pay MnDOT for all costs required to repair the sign panel(s) and/or sign structure(s), as required, to remedy any of the conditions outlined in the previous paragraph.

If total replacement is required, I agree to pay MnDOT all costs for a new sign(s), in advance of the replacement, the current cost for fabricating and installing the sign(s) and/or replacing the sign structure(s).

In addition, I understand that when the sign(s) must be refurbished due to natural deterioration, I will be required to reapply for the sign(s) and pay current replacement costs. Based on manufacturers' warranties, "natural deterioration" is approximately a 15-year replacement cycle, enforced at MnDOT's discretion.

I understand that there is a possibility, in the future, that my sign(s) might need to be permanently relocated, or removed completely and not re-installed, in order to accommodate roadway construction or maintenance, or when new or additional regulatory, warning, or guide signs are required to be installed, or as required by changes in Minnesota State Statutes applying to guide and information signs. I understand that MnDOT reserves the right to relocate my sign(s) when it is necessary to comply with these listed conditions or regulations.

Additional guidance (trailblazing) signing from the MnDOT highway intersection/interchange to the facility will be the responsibility of the applicant and the local road authority, and must be in place prior to the installation of MnDOT highway signing.

I, the undersigned, accept the terms and conditions of the regulations of the Commissioner of Transportation and agree to fully comply, to the satisfaction of MnDOT.

Date _____ Applicant's Signature _____

Applicant's Name (print) _____

Agency Name (if applicable) _____

****end****

Last updated August 2017

MINNESOTA DEPARTMENT OF TRANSPORTATION

Permit Application for the installation of Vehicle Speed Feedback Signs

Application is hereby made to place a Vehicle Speed Feedback sign(s)
by the City of _____ on Trunk Highway _____ at the following locations:

Instructions (please delete before submitting permit):

- Please include a location description here.
- Include a map showing the sign location.
- Include the make of model of the sign.

The City will comply with MnDOT criteria including the *Vehicle Speed Feedback Signs: Buyer and Installation Guide* and the *Minnesota Manual on Uniform Traffic Control Devices*, regarding the placement and the sign design including crash worthiness.

The City further agrees to assume all liability for, and save the State harmless from, any and all claims for damages, actions or causes of action arising out of the placement of these devices under this application and permit.

It is understood that there will be no participation on the part of the State in the cost of the devices. The State has the right to have the devices removed and/or revised upon notice given by the State.

Name of Municipality or Other

Date: _____ By: _____
Applicant Name and Title

Permission is hereby granted for the installation of the Dynamic Speed Display sign(s).

Approved: Minnesota Department of Transportation

By: _____
District Traffic Engineer Date

Traffic signs shall be constructed in accordance with the following:

MATERIALS

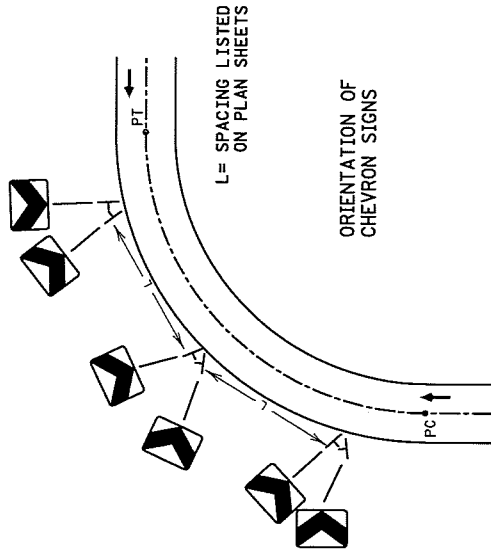
Sign Base Material

Sign base material for sign panels shall be sheet aluminum in accordance with MnDOT 3352.2A1a.

Sign Face Material

Sign face material for sign panels shall be Sheeting for Rigid Permanent Signs Delineators and Markers (Type XI) from MnDOT's Approved/Qualified Products list:
<http://www.dot.state.mn.us/products/signing/sheeting.html>

The following is a link to the 2016 MnDOT Standard Specifications for Construction:
<http://www.dot.state.mn.us/pre-letting/spec/index.html>



NOTES:

URBAN LOCATIONS ARE PAVEMENT SECTIONS WITH CURB AND GUTTER.

RURAL LOCATIONS ARE PAVEMENT SECTIONS WITHOUT CURB AND GUTTER.

SIGNS SHALL BE PLACED AND ORIENTED APPROXIMATELY AS SHOWN IN THE PLAN, AT RIGHT ANGLES TO THE DIRECTION OF AND FACING THE TRAFFIC THEY ARE INTENDED TO SERVE, UNLESS OTHERWISE SPECIFIED. TO AVOID SPECULAR GLARE, TURN SIGNS APPROXIMATELY THREE DEGREES AWAY FROM APPROACHING TRAFFIC.

IF A SIGN NEEDS TO BE REPOSITIONED FROM THE PROPOSED PLAN LOCATION IN ORDER TO AVOID CONFLICTS WITH UTILITIES OR OBSTACLES, CONTACT THE PROJECT ENGINEER.

SIGN FACES SHALL BE MOUNTED PLUMB.

LATERAL CLEARANCES GIVEN APPLY TO RIGHT AND/OR LEFT SIDE INSTALLATION.

SIGNS SHALL NOT BE ERECTED OR CONSTRUCTED SO AS TO CAUSE ANY PORTION OF THE SIGN TO BE WITHIN 8.5' OF THE CENTERLINE OF A RAILROAD TRACK.

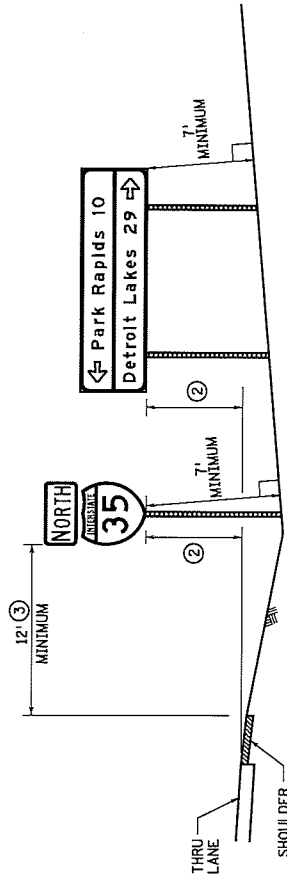
SIGNS SHALL BE PLACED SUCH THAT OBSTACLES DO NOT BLOCK THEM FROM BEING VIEWED BY THE APPROACHING TRAFFIC.

SIGNS SHALL BE PLACED A MINIMUM OF 10' FROM THE NEAREST OBSTACLE. OBSTACLES MAY INCLUDE, BUT ARE NOT LIMITED TO, LIGHT POLES, TREES, SIGNS, AND BUILDINGS. SIGNS MAY BE PLACED CLOSER TO SIGNS IN TIGHT AREAS, BUT NO MORE THAN TWO POSTS IN A 7' DIAMETER CIRCLE.

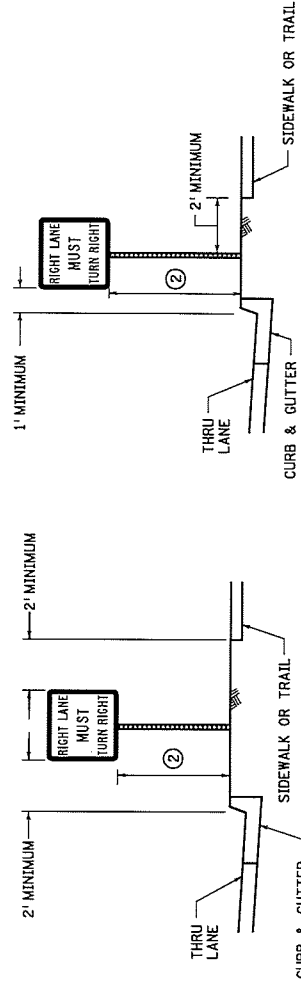
① TO BE USED ONLY WHEN BOULEVARD IS TOO NARROW TO OBTAIN ADEQUATE URBAN LOCATION SIGN OFFSETS.

② ALL SIGN MOUNTING HEIGHTS ARE MEASURED VERTICALLY FROM THE BOTTOM OF THE SIGN TO THE TOP OF THE CURB, OR IN ABSENCE OF CURB, TO THE NEAR EDGE OF THE THRU-LANE PAVEMENT. SEE SIGN TABULATIONS.

③ MINIMUM MAY BE REDUCED TO 6' FROM SHOULDER AND 12' FROM THRU LANE IF SITE CONDITIONS PROHIBIT A 12' OFFSET FROM SHOULDER. IF ADEQUATE RIGHT OF WAY IS NOT AVAILABLE TO PLACE SIGN AT REDUCED MINIMUM, SIGN SHALL BE PLACED SUCH THAT PANEL EDGE IS 1' FROM RIGHT OF WAY AND NEAR PANEL EDGE IS AT LEAST 2' FROM EDGE OF SHOULDER.



RURAL LOCATIONS



URBAN LOCATIONS

NARROW URBAN LOCATIONS ①

REVISION
APPROVED: OCTOBER 16, 2019
STATE TRAFFIC ENGINEER

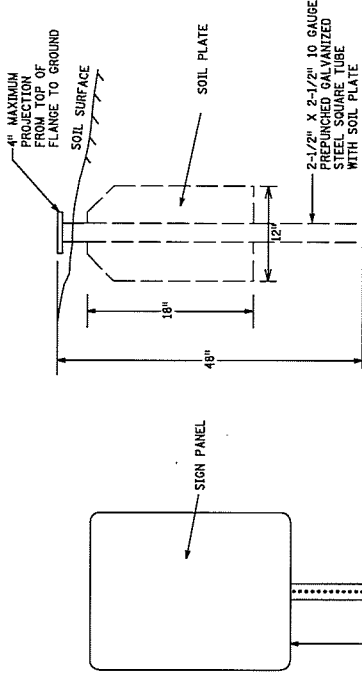


STANDARD PLAN 5-297.701 1 OF 1
APPROVED: 10-16-2019
REVISOR:
Peter A. Harff
STATE DESIGN ENGINEER

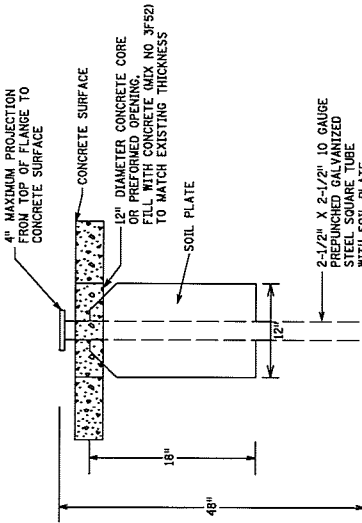
**STANDARD SIGN PLACEMENT
TYPE C & D**

STATE PROJ. NO.

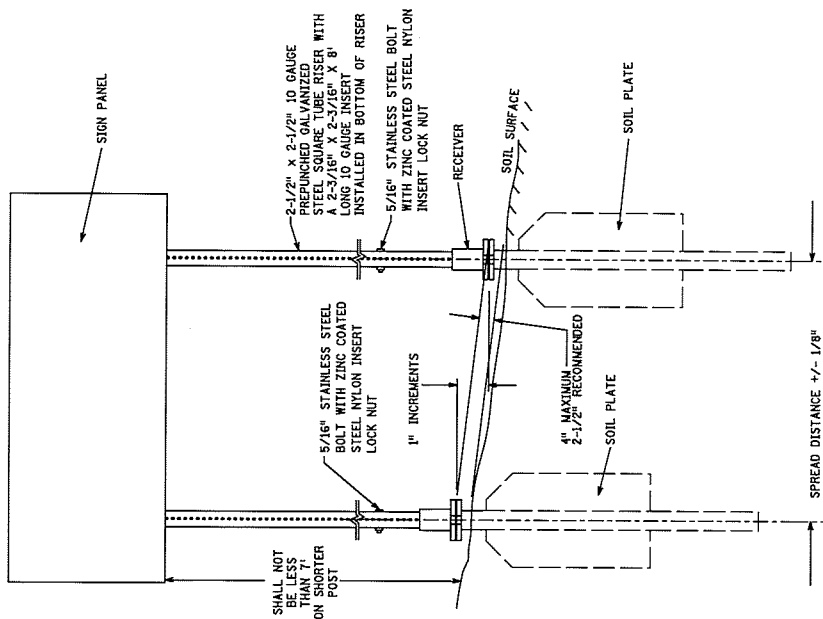
(T.H.) SHEET NO. OF SHEETS



SLIP BASE IN SOIL DETAIL

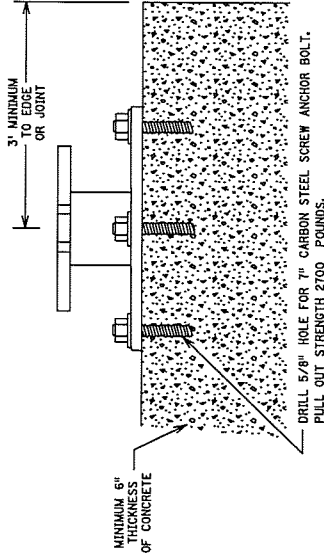


SLIP BASE CORED THROUGH CONCRETE DETAIL



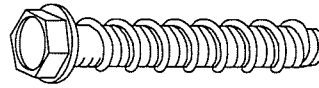
FOR MULTIPLE POST APPLICATIONS, ENSURE SOIL PLATES ARE COMPLETELY BURIED, IF SOIL SURFACE IS NOT LEVEL THE BASES SHALL BE DRIVEN IN UNTIL BASES ARE OFFSET IN 1 INCH INCREMENTS. THE BASES SHALL BE TRUE AND SQUARE WITH ONE ANOTHER TO ENSURE PROPER UNRESTRICTED INSERTION OF STEEL TUBE RISERS. SIGN PANELS SHALL BE MOUNTED LEVEL.

MULTIPLE POST SLIP BASE DETAIL

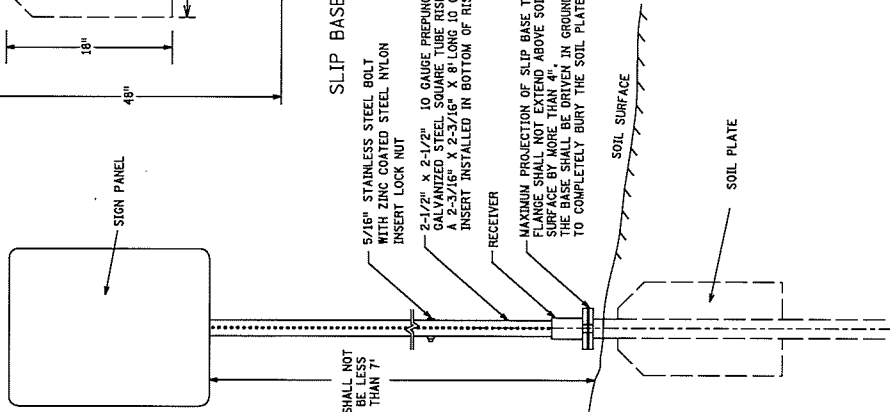


THE MINIMUM CONCRETE SURFACE REQUIRED FOR MOUNTING THE SLIP BASE IS 6 FEET BY 6 FEET.

SLIP BASE MOUNTED TO CONCRETE SURFACE DETAIL



SCREW ANCHOR BOLT



SLIP BASE
(TYPICAL PLACEMENT IN SOIL SHOWN)

NOTES:

1. FOR SLIP BASE USE APPROVED PRODUCT FROM MNDOT APPROVED PRODUCTS LIST. PRODUCTS SHALL BE MODIFIED AS SHOWN.
2. RISER POST TO BE MOUNTED CLOSE TO PLUMB, UP TO A MAXIMUM OF 1/2" OF SHIM WASHERS MAY BE USED BETWEEN SLIP BASE AND CONCRETE FOR LEVELING.
3. 1/16" THICK LEVELING SHIMS MAY BE USED TO PLUMB TOP HALF. SHIMS NEED TO BE PLACED UNDER TEFLON COATED SLIP WASHER MAXIMUM OF 2 SHIMS PER NOTCH POINT.
4. FOR SIGN PANEL MOUNTING DETAILS SEE STANDARD PLAN 5-297.720.
5. SQUARE TUBE SIGN POST PER MNDOT SPEC. 3402.

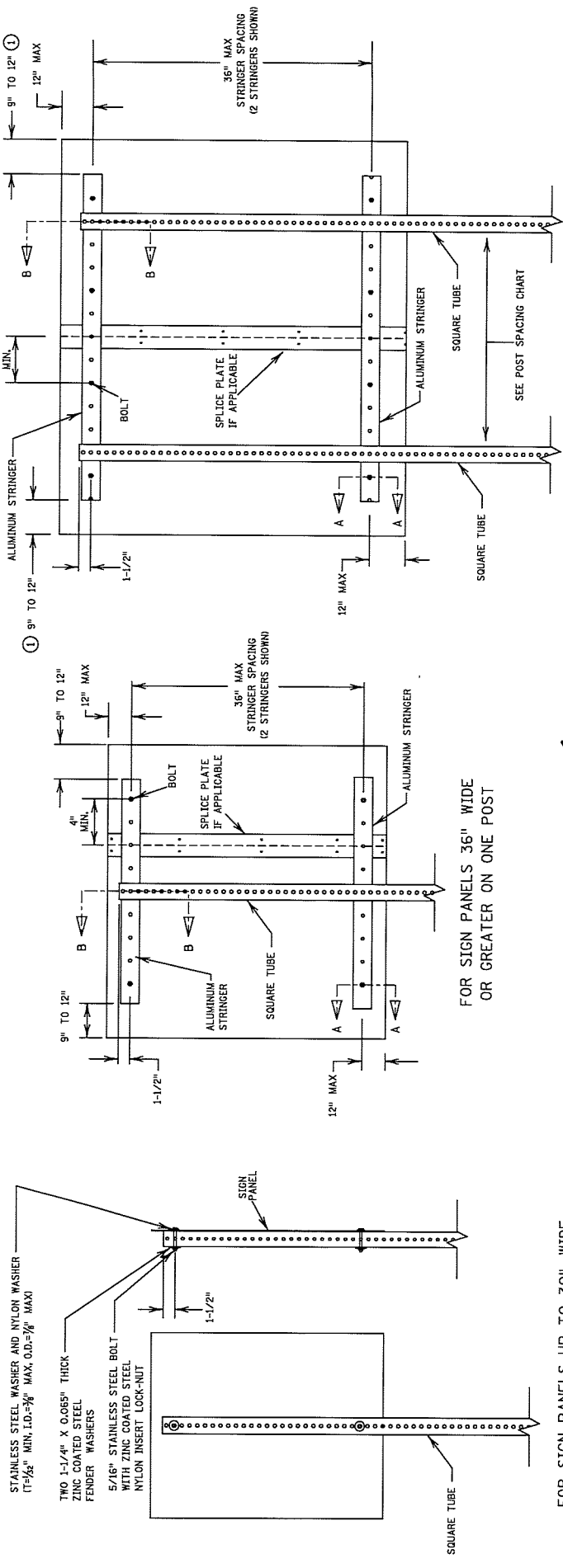
SQUARE TUBE
SLIP BASE

STATE PROJ. NO.

(T.H.)

SHEET NO.

OF SHEETS

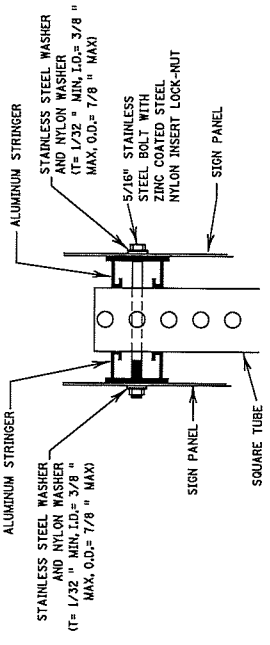


FOR SIGN PANELS UP TO 30" WIDE

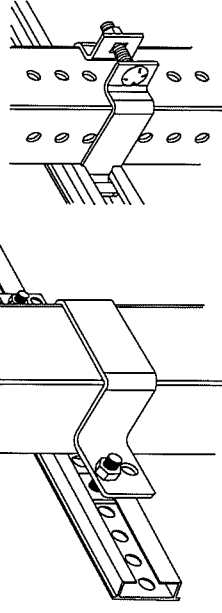
FOR SIGN PANELS 36" WIDE OR GREATER ON ONE POST

FOR SIGN PANELS ON TWO OR MORE POSTS

① IF POST SPACING REQUIRES PLACEMENT OF A POST WITHIN THIS AREA, EXTEND STRINGERS AS NEEDED TO ACCOMMODATE THE STRINGER TO POST CLAMP.



VIEW A-A



VIEW B-B

CLAMP DETAIL
4" SQUARE TUBE

CLAMP DETAIL
2" AND 2 1/2" SQUARE TUBE

BACK TO BACK
SIGN MOUNTING WITH STRINGERS

NOTES:
1. BOLT SIGN PANELS TO STRINGERS OR RISER POSTS AT NO GREATER THAN 24 INCH SPACING.
SEE THE MOUNT STANDARD SIGNS AND MARKINGS MANUAL FOR MOUNTING HOLES (PUNCH CODES) INFORMATION.
2. STRINGERS SHALL BE CENTERED ON SIGN PANEL.

SQUARE TUBE
SIGN MOUNTING DETAILS

1 OF 3

STATE PROJ. NO.

(T.H.)

SHEET NO.

OF SHEETS

[illegible]

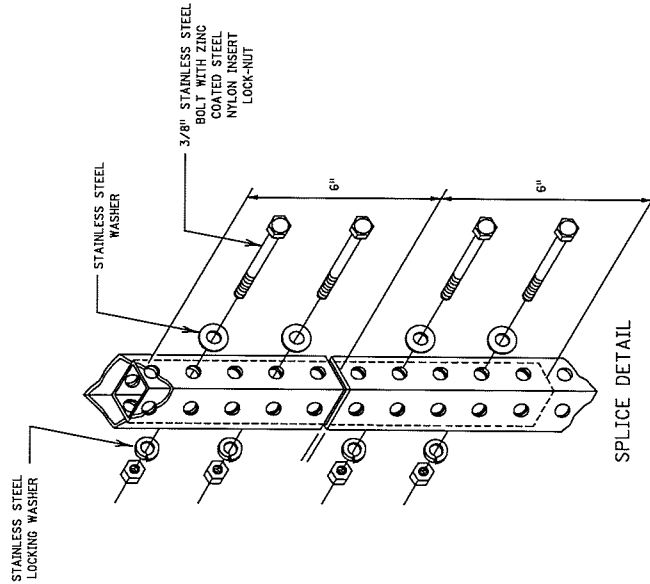
PANEL WIDTH (INCHES)

[illegible]

PANEL WIDTH (INCHES)

3 OF 3

(T.H.) SHEET NO. OF SHEETS



NO MORE THAN ONE SPLICE PER POST.
 WHEN USED MUST BE PLACED AT LEAST 8 FEET ABOVE GROUND. THE PREFERRED PLACEMENT LOCATION IS BEHIND THE SIGN PANEL.
 INTERIOR POST STUD SHALL BE ONE SIZE SMALLER FOR A TIGHT FIT. IF RISER POST IS 2-1/2", INTERIOR POST IS 2-3/16". IF RISER POST IS 2", INTERIOR POST IS 1-3/4".

PANEL WIDTH	SQUARE TUBE POST SPACING							
	2 POSTS (IN)	3 POSTS (IN)	4 POSTS (IN)	5 POSTS (IN)	6 POSTS (IN)	7 POSTS (IN)	8 POSTS (IN)	
24	12							
30	12							
36	12							
42	18							
48	24							
54	30							
60	36							
66	36							
72	42							
78	42							
84	48							
90	48	42						
96	48	42						
102	54	42						
108	54	42						
114	60	42						
120	60	48						
126	66	48						
132	66	48	42					
138	72	48	42					
144	72	48	42					
150	78	54	42					
156	78	54	42					
162	84	54	42					
168	84	60	48					
174	90	60	48	42				
180	90	60	48	42				
186	96	66	48	42				
192	96	66	48	42				
198	102	66	54	42				
204	102	72	54	42				
210	108	72	54	42				
216	108	72	54	48	42			
222	114	78	60	48	42			
228	114	78	60	48	42			
234	120	78	60	48	42			
240	120	84	60	48	42			
246	84	66	54	42				
252	84	66	54	42				
258	90	66	54	42				
264	90	72	54	48	42			
270	96	72	60	48	42			
276	96	72	60	48	42			
282	96	72	60	48	42			
288	96	72	60	48	42			
294	102	78	60	54	42			
300	102	78	60	54	42			
306	102	78	66	54	42	42		
312	108	78	66	54	48	42		
318	108	84	66	54	48	42		
324	108	84	66	54	48	42		
330	114	84	66	60	48	42		
336	114	84	72	60	48	42		

DISTANCES ARE CENTER-TO-CENTER OF POSTS

clerk@breitungtownship.org

From: Steve, [REDACTED]
Sent: Wednesday, October 26, 2022 5:13 PM
To: Dianna Sundahl; Towersoudanwater
Subject: Paycheck

I do not want to be paid for rest of 2022 for training officer I will donate my time for rest of 2022 with no pay Thanks
Steve

Sent from my iPhone

**TOWNSHIP OF BREITUNG
RESOLUTION NO. 2022-29**

**STATE OF MINNESOTA
COUNTY OF ST. LOUIS
TOWNSHIP OF BREITUNG**

RESOLUTION ACCEPTING DONATIONS

WHEREAS, Breitung Township is authorized to accept and maintain donations of real and personal property pursuant to Minnesota Statutes Section 465.03 for the benefit of its citizens; and

WHEREAS, the following persons and entities have offered to contribute the donations set forth below to the township:

Name of Donor	Donations	Date
1. Bois Forte Reservation Tribal Council	\$7500.00	10/04/2022
2. Pat and Paul Kreig (in memory of Phyllis Burgess)	\$3000.00	09/28/2022
3. Tower-Soudan & Lake Vermilion Communities (Tacos with Cops)	\$1755.80	10/08/2022

WHEREAS, the terms or conditions of the donations, if any, are as follows:

Donation Number	Terms or Conditions
2. Pat and Paul Kreig	Police Department equipment updates & training
3. Tower-Soudan & Lake Vermilion Communities	Police Department

WHEREAS, all such donations have been contributed to the township for the benefit of its citizens, as allowed by law; and

WHEREAS, The Township Board finds that it is appropriate to accept the donations offered.

NOW, THEREFORE, BE IT RESOLVED BY THE TOWN BOARD OF BREITUNG TOWNSHIP, ST. LOUIS COUNTY, MINNESOTA, AS FOLLOWS:

1. The donations described above are accepted and shall be used in accordance with noted terms or conditions either alone or in cooperation with others, as allowed by law.
2. The town clerk is hereby directed to acknowledge to each donor the town's acceptance of the donor's donation.

Adopted by the Town Board of Breitung Township on October 27th, 2022. Chairman Timothy Tomsich, Supervisor Charles Tekautz and Supervisor Gregory Dostert

Ayes:
Nays:

Approved: Chairman

Attested: Clerk

Timothy Tomsich-Chairman

Dianna Sundahl - Clerk